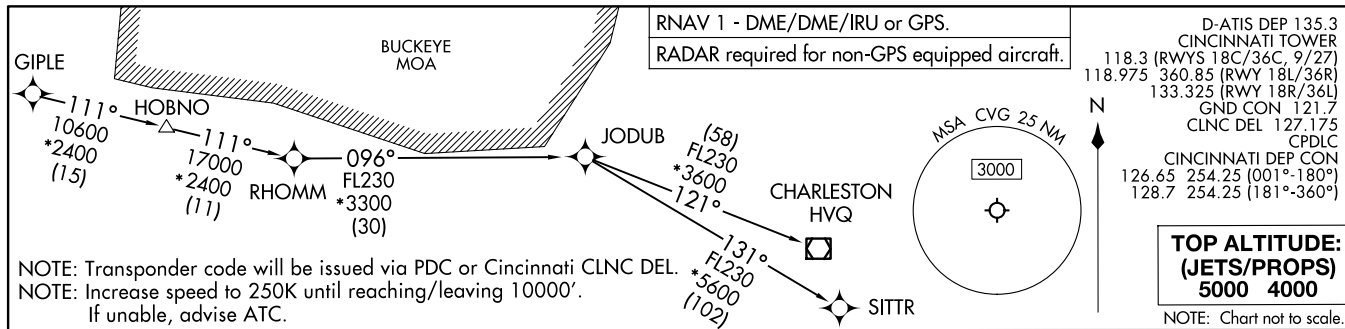




GIPLE SEVEN DEPARTURE (RNAV) Transition Route  
 (GIPLEZ.GIPLE) 21 MAR 24  
 CINCINNATI/NORTHERN KENTUCKY INTL (CVG)



NOTE: Transponder code will be issued via PDC or Cincinnati CLNC DEL.  
 NOTE: Increase speed to 250K until reaching/leaving 10000'.  
 If unable, advise ATC.

**DEPARTURE ROUTE DESCRIPTION**

- TAKEOFF RUNWAY 9: Climb on heading 096° to 1400, then direct KINNG, then on track 122° to GIPLE, thence ...
  - TAKEOFF RUNWAY 18L: Climb on heading 186° to intercept course 171° to LASNG, then on track 108° to CODKO, then on track 105° to GIPLE, thence ...
  - TAKEOFF RUNWAY 18C: Climb on heading 186° to 1400, then direct FLOEE, then on track 105° to CODKO, then on track 105° to GIPLE, thence ...
  - TAKEOFF RUNWAY 18R: Climb on heading 186° to intercept course 202° to FANSA, then on track 158° to HIPAS, then on track 096° to GIPLE, thence ...
  - TAKEOFF RUNWAY 27: Climb on heading 276° to 1400, then direct BONLE, then on track 189° to REKUE, then on track 149° to WIMDI, then on track 079° to GIPLE, thence ...
  - TAKEOFF RUNWAY 36L: Climb on heading 006° to intercept course 325° to RORFE, then on track 053° to SUVBE, then on track 121° to HOMIX, then on track 137° to GIPLE, thence...
  - TAKEOFF RUNWAY 36C: Climb on heading 006° to intercept course 325° to RORFE, then on track 053° to SUVBE, then on track 121° to HOMIX, then on track 137° to GIPLE, thence ...
  - TAKEOFF RUNWAY 36R: Climb on heading 006° to 1400, then direct HAGSS, then on track 094° to HOMIX, then on track 137° to GIPLE, thence ...
- ...turbojets: maintain 5000, all other aircraft: maintain 4000. Expect clearance to filed altitude within ten minutes after departure.
- CHARLESTON TRANSITION (GIPLEZ.HVQ):  
JODUB TRANSITION (GIPLEZ.JODUB):  
SITTR TRANSITION (GIPLEZ.SITTR):

(GIPLEZ.GIPLE) 24137  
 GIPLE SEVEN DEPARTURE (RNAV) Transition Route  
 AL-655 (FAA)  
 CINCINNATI/NORTHERN KENTUCKY INTL (CVG)  
 COVINGTON, KENTUCKY