

LOC/DME I-SIC 111.55 Chan 52 (Y)	APP CRS 186°	Rwy Idg TDZE 875 Apt Elev 896	11000
--	------------------------	---	--------------

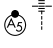
ILS RWY 18C (SA CAT I & II)

CINCINNATI/NORTHERN KENTUCKY INTL (CVG)

RADAR required for procedure entry. DME or RADAR required.

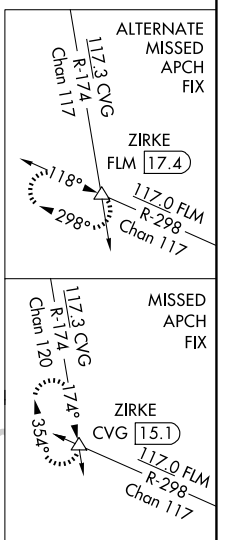
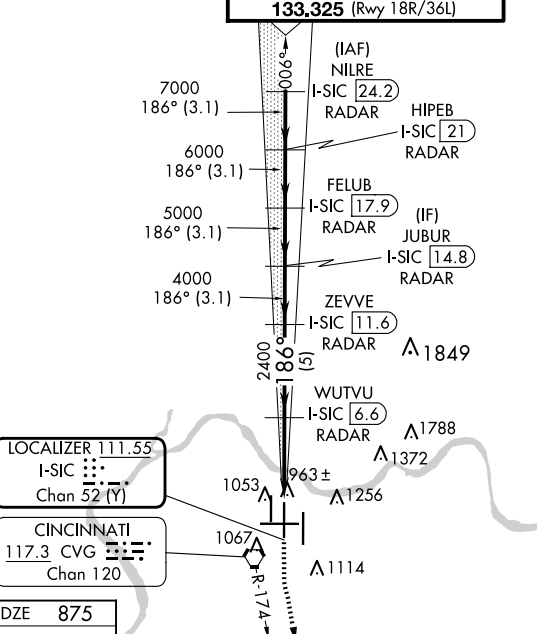
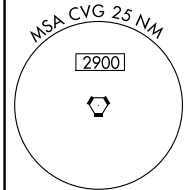
Simultaneous approach authorized. SA CAT I: Requires specific OPSPEC, MSPEC, or LOA approval and use of HUD to DH.
SA CAT II: Reduced Lighting: Requires specific OPSPEC, MSPEC, or LOA approval and use of autoland or HUD to touchdown.

MALSR

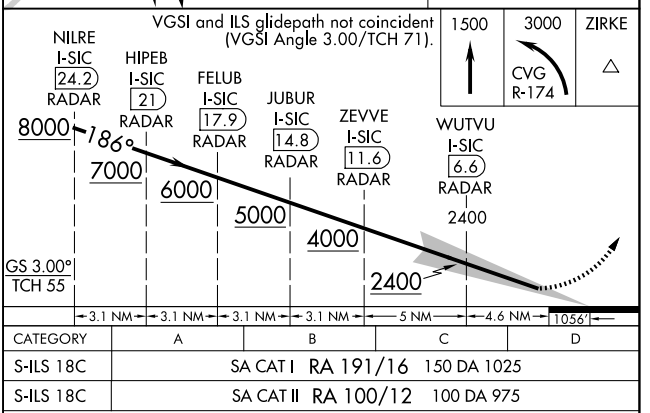
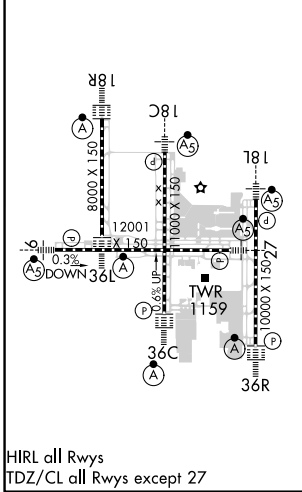


MISSED APPROACH: Climb to 1500 then climbing left turn to 3000 on CVG R-174 to ZIRKE INT/CVG 15.1 DME and hold.

D-ATIS ARR 134.375 DEP 135.3	CINCINNATI APP CON 119.7 363.15 (090°-269°) 123.875 363.15 (270°-089°)	CINCINNATI TOWER 118.975 360.85 (Rwy 18L/36R) 118.3 (Rwys 18C/36C, 09/27) 133.325 (Rwy 18R/36L)	GND CON 121.7	CLNC DEL 127.175	CPDLC
---	--	---	-------------------------	----------------------------	-------



ELEV 896	D	TDZE 875
-----------------	----------	-----------------



CATEGORY	A	B	C	D
S-ILS 18C	SA CAT I	RA 191/16	150 DA 1025	
S-ILS 18C	SA CAT II	RA 100/12	100 DA 975	

SA CATEGORY I & II ILS-SPECIAL AIRCREW & AIRCRAFT CERTIFICATION REQUIRED

SE-1, 20 MAR 2025 to 17 APR 2025

SE-1, 20 MAR 2025 to 17 APR 2025