

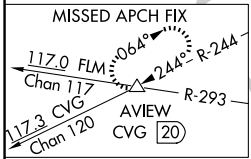
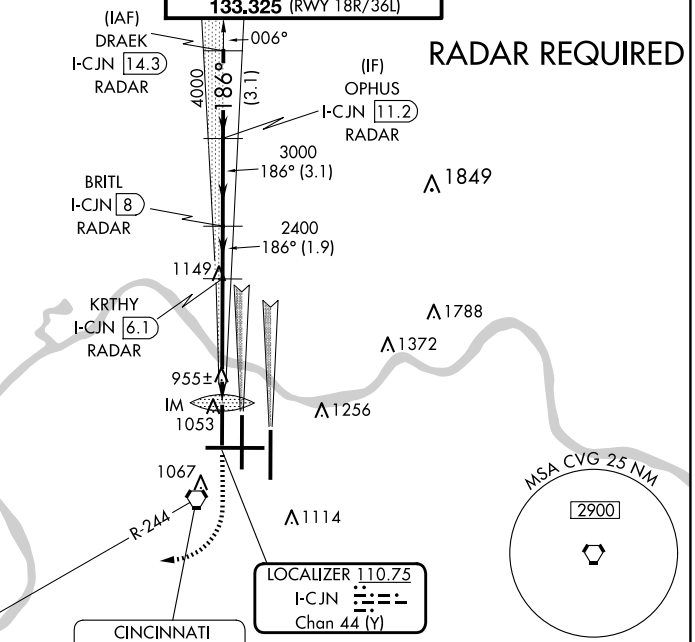
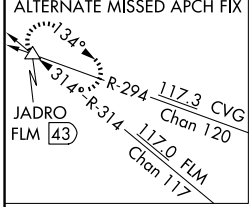
LOC/DME I-CJN 110.75 Chan 44 (Y)	APP CRS 186°	Rwy Idg TDZE Apt Elev 8000 868 896
--	------------------------	--

ILS RWY 18R (CAT II)

CINCINNATI/NORTHERN KENTUCKY INTL (CVG)

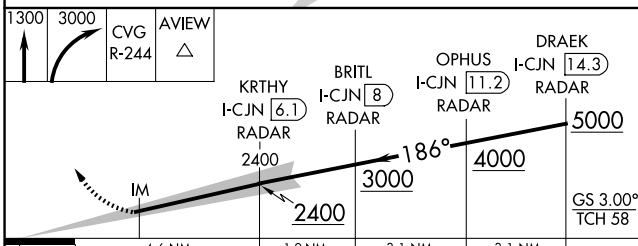
⚠ Simultaneous approach authorized with Rwy 18C and 18L. ALSIF-2 MISSED APPROACH: Climb to 1300 then climbing right turn to 3000 via CVG R-244 to AVIEW INT/ CVG 20 DME and hold.

D-ATIS ARR 134.375 DEP 135.3	CINCINNATI APP CON 119.7 363.15 (090°-269°) 123.875 363.15 (270°-089°)	CINCINNATI TOWER 118.975 360.85 (RWY 18L/36R) 118.3 (RWYS 18C/36C, 09/27) 133.325 (RWY 18R/36L)	GND CON 121.7	CLNC DEL 127.175	CPDLC
---	--	---	-------------------------	----------------------------	-------



CINCINNATI
117.3 CVG
Chan 120

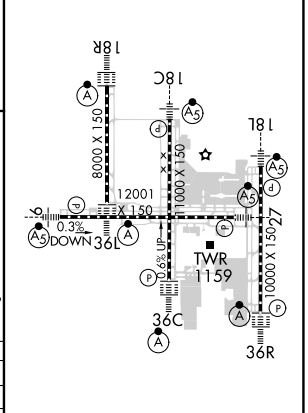
LOCALIZER 110.75
I-CJN
Chan 44 (Y)



1141	4.6 NM	1.9 NM	3.1 NM	3.1 NM
CATEGORY	A	B	C	D
S-ILS-18R	RA 113/12		100	DA 968

CATEGORY II ILS - SPECIAL AIRCREW & AIRCRAFT CERTIFICATION REQUIRED

ELEV 896	D	TDZE 868
----------	---	----------



HIRL all Rwys
TDZ/CL all Rwys except 27

SE-1, 20 MAR 2025 to 17 APR 2025

SE-1, 20 MAR 2025 to 17 APR 2025