

LOC I-JDP <b>108.7</b>	APP CRS <b>276°</b>	Rwy Idg <b>12000</b> TDZE <b>875</b> Apt Elev <b>896</b>
---------------------------	------------------------	--

# ILS RWY 27 (SA CAT I & II)

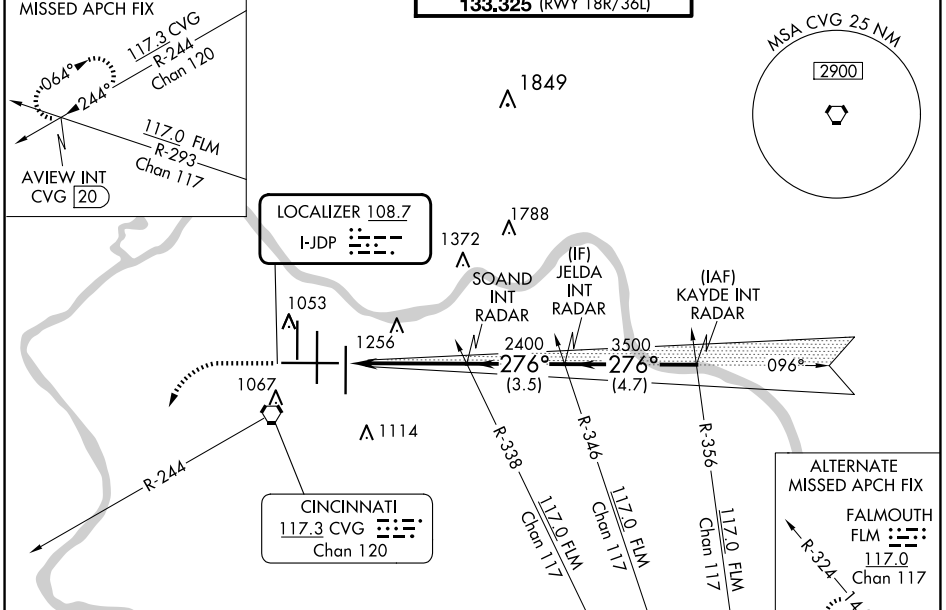
CINCINNATI/NORTHERN KENTUCKY INTL (CVG)

RADAR required for procedure entry.

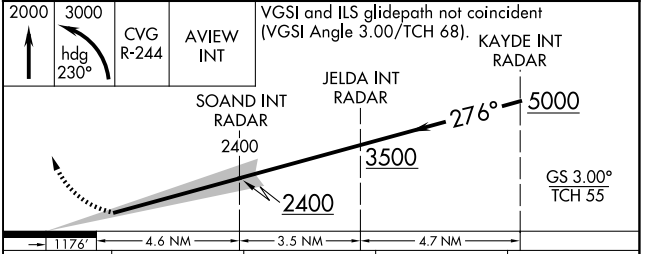
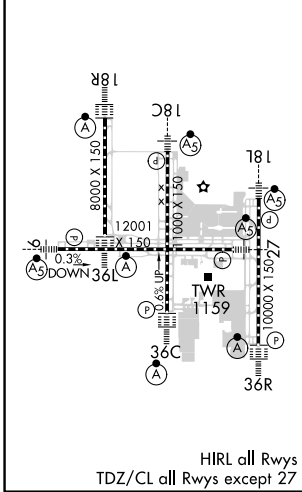
SA Cat I & II: Requires specific OPSPEC, MSPEC, or LOA approval.

MALSR MISSED APPROACH: Climb to 2000 then climbing left turn to 3000 on heading 230° and CVG R-244 to AVIEW INT/CVG 20 DME and hold.

D-ATIS ARR <b>134.375</b> DEP <b>135.3</b>	CINCINNATI APP CON <b>119.7 363.15</b> (090°-269°) <b>123.875 363.15</b> (270°-089°)	CINCINNATI TOWER <b>118.975 360.85</b> (RWY 18L/36R) <b>118.3</b> (RWYS 18C/36C, 09/27) <b>133.325</b> (RWY 18R/36L)	GND CON <b>121.7</b>	CLNC DEL <b>127.175</b>	CPDLC
---	--	---	-------------------------	----------------------------	-------



ELEV 896	<b>D</b>	TDZE 875
----------	----------	----------



CATEGORY	A	B	C	D
S-ILS 27	SA CAT I	RA 137/14	150 DA 1025	
S-ILS 27	SA CAT II	RA 90/12	100 DA 975	

**SA CATEGORY I & II ILS - SPECIAL AIRCREW & AIRCRAFT CERTIFICATION REQUIRED**

SE-1, 20 MAR 2025 to 17 APR 2025

SE-1, 20 MAR 2025 to 17 APR 2025