

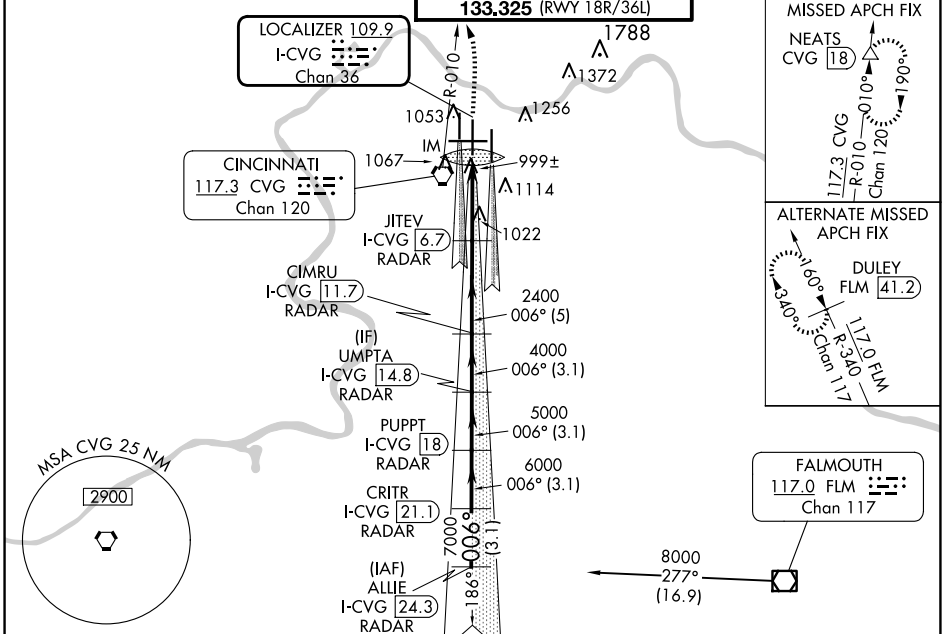
LOC/DME I-CVG 109.9 Chan 36	APP CRS 006°	Rwy Idg TDZE Apt Elev 11000 851 896
--	------------------------	---

ILS RWY 36C (CAT II & III)

CINCINNATI/NORTHERN KENTUCKY INTL (CVG)

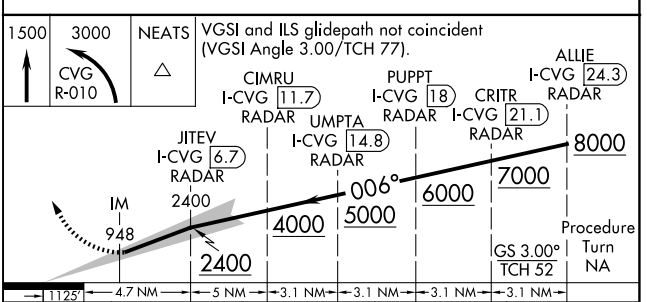
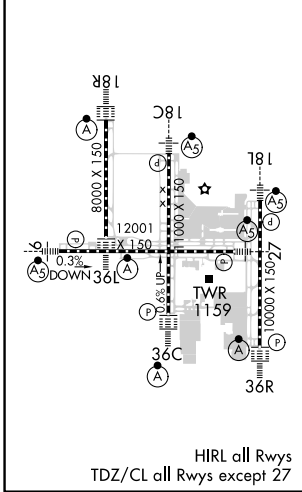
<p>Simultaneous approach authorized with Rwy 36L/R. DME required.</p>	ALSf-2	<p>MISSED APPROACH: Climb to 1500 then climbing left turn to 3000 via CVG R-010 to NEATS Int/18 DME and hold.</p>
	<p>CPDLC</p>	

D-ATIS ARR 134.375 DEP 135.3	CINCINNATI APP CON 119.7 363.15 (090°-269°) 123.875 363.15 (270°-089°)	CINCINNATI TOWER 118.975 360.85 (RWY 18L/36R) 118.3 (RWYS 18C/36C, 09/27) 133.325 (RWY 18R/36L)	GND CON 121.7	CLNC DEL 127.175	CPDLC
---	--	---	-------------------------	----------------------------	-------



ELEV 896	D	TDZE 851
----------	----------	----------

DME or RADAR REQUIRED



	11251	4.7 NM	5 NM	3.1 NM	3.1 NM	3.1 NM	3.1 NM
CATEGORY	A	B	C	D			
S-ILS-36C	CAT II RA 134/12 100 DA 951						
S-ILS 36C	CAT IIIa			RVR 07			
S-ILS 36C	CAT IIIb			RVR 06			
S-ILS 36C	CAT IIIc			NA			

CATEGORY II & III ILS - SPECIAL AIRCREW & AIRCRAFT CERTIFICATION REQUIRED

SE-1, 20 MAR 2025 to 17 APR 2025

SE-1, 20 MAR 2025 to 17 APR 2025