

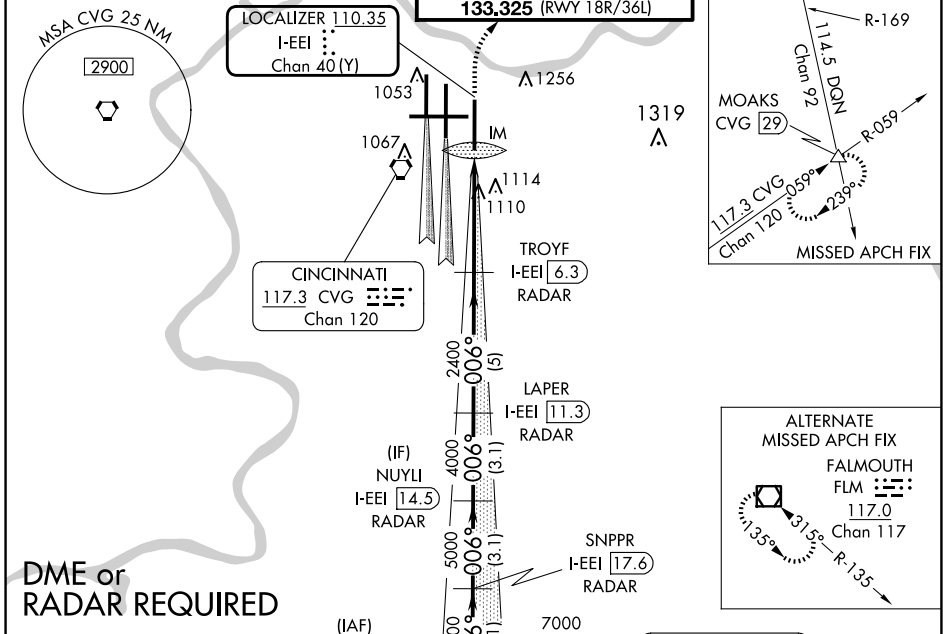
LOC/DME I-EEI 110.35 Chan 40 (Y)	APP CRS 006°	Rwy Idg TDZE Apt Elev 10000 896 896
---	------------------------	---

ILS RWY 36R (CAT II & III)

CINCINNATI/NORTHERN KENTUCKY INTL (CVG)

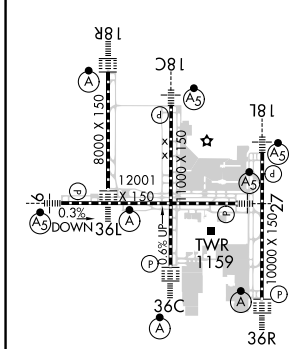
	ALSIF-2 	MISSED APPROACH: Climb to 1500 then climbing right turn to 3000 via CVG R-059 to MOAKS Int/CVG 29 DME and hold.

D-ATIS ARR 134.375 DEP 135.3	CINCINNATI APP CON 119.7 363.15 (090°-269°) 123.875 363.15 (270°-089°)	CINCINNATI TOWER 118.975 360.85 (RWY 18L/36R) 118.3 (RWYs 18C/36C, 09/27) 133.325 (RWY 18R/36L)	GND CON 121.7	CLNC DEL 127.175	CPDLC
---	--	---	-------------------------	----------------------------	-------



DME or RADAR REQUIRED

ELEV 896	D	TDZE 896
----------	----------	----------



1500 3000
 ↑ CVG R-059
 MOAKS △
 TROYF I-EEI 6.3 RADAR
 LAPER I-EEI 11.3 RADAR
 NUYLI I-EEI 14.5 RADAR
 SNPPR I-EEI 17.6 RADAR
 KYKAT I-EEI 20.8 RADAR
 FALMOUTH 117.0 FLM Chan 117
 VGSI and ILS glidepath not coincident (VGSI Angle 3.00/TCH 70).
 Procedure Turn NA
 GS 3.00° TCH 55

IM 998	2400	4000	5000	6000	7000
11070'	4.5 NM	5 NM	3.1 NM	3.1 NM	3.1 NM
CATEGORY	A	B	C	D	
S-ILS 36R	CAT II RA 98/12 100 DA 996				
S-ILS 36R	CAT IIIa RVR 07				
S-ILS 36R	CAT IIIb RVR 06				
S-ILS 36R	CAT IIIc NA				

CATEGORY II & III ILS - SPECIAL AIRCREW & AIRCRAFT CERTIFICATION REQUIRED

SE-1, 20 MAR 2025 to 17 APR 2025

SE-1, 20 MAR 2025 to 17 APR 2025