

LOC/DME I-CVG 109.9 Chan 36	APP CRS 006°	Rwy Idg 11000 TDZE 851 Apt Elev 896
---	------------------------	--

ILS or LOC RWY 36C

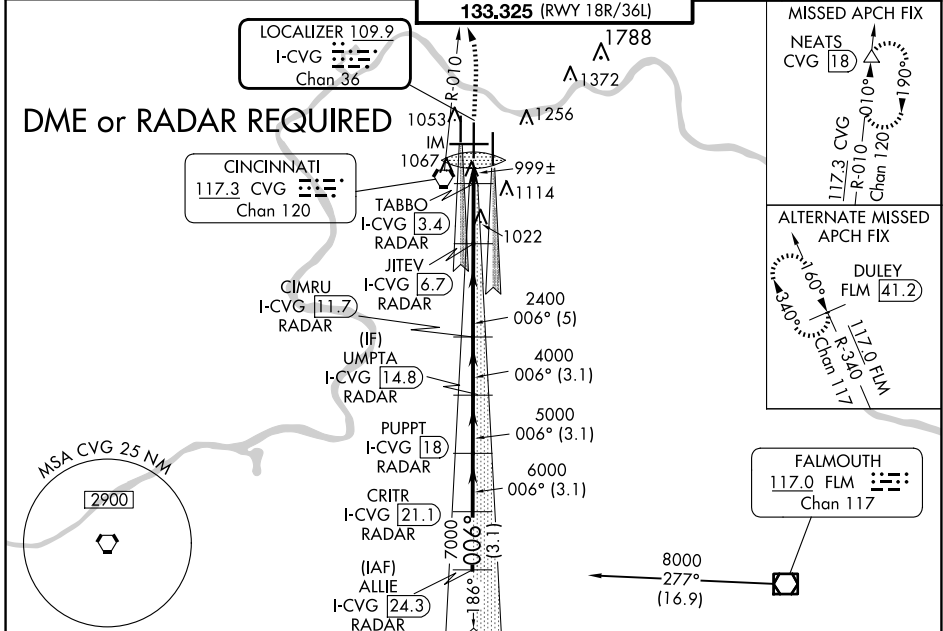
CINCINNATI/NORTHERN KENTUCKY INTL (CVG)

Simultaneous approach authorized with Rwy 36L/R.
DME required.

ALSf-2

MISSED APPROACH: Climb to 1500 then climbing left turn to 3000 via CVG R-010 to NEATS/CVG 18 DME and hold.

D-ATIS ARR 134.375 DEP 135.3	CINCINNATI APP CON 119.7 363.15 (090°-269°) 123.875 363.15 (270°-089°)	CINCINNATI TOWER 118.975 360.85 (RWY 18L/36R) 118.3 (RWYS 18C/36C, 09/27) 133.325 (RWY 18R/36L)	GND CON 121.7	CLNC DEL 127.175	CPDLC
---	--	---	-------------------------	----------------------------	-------



SE-1, 20 MAR 2025 to 17 APR 2025

SE-1, 20 MAR 2025 to 17 APR 2025

ELEV 896	TDZE 851	VGSI and ILS glidepath not coincident (VGSI Angle 3.00/TCH 77).	
TDZ/CL all Rwy's except 27 HIRL all Rwy's	NEATS	CIMRU I-CVG 11.7 RADAR	PUPPT I-CVG 18 RADAR
	JITEV I-CVG 6.7 RADAR	UMPTA I-CVG 14.8 RADAR	CRITR I-CVG 21.1 RADAR
	TABBO I-CVG 3.4 RADAR	Procedure Turn NA	
FAF to MAP 4.7 NM	S-ILS 36C 1051/18 200 (200-½)		
Knots: 60 90 120 150 180	S-LOC 36C 1340/24 489 (500-½) 1340/50 489 (500-1)		
Min:Sec: 4:42 3:08 2:21 1:53 1:34	CIRCLING 1460-1 564 (600-1) 1560-1¾ 664 (700-1¾) 1560-2 664 (700-2)		
	TABBO FIX MINIMUMS		
	S-LOC 36C 1260/24 409 (400-½) 1260/40 409 (400-¾)		
	CIRCLING 1460-1 564 (600-1) 1560-1¾ 664 (700-1¾) 1560-2 664 (700-2)		