

LOC/DME I-EEI <b>110.35</b> Chan <b>40 (Y)</b>	APP CRS <b>006°</b>	Rwy Idg <b>10000</b> TDZE <b>896</b> Apt Elev <b>896</b>
--	------------------------	--

# ILS or LOC RWY 36R

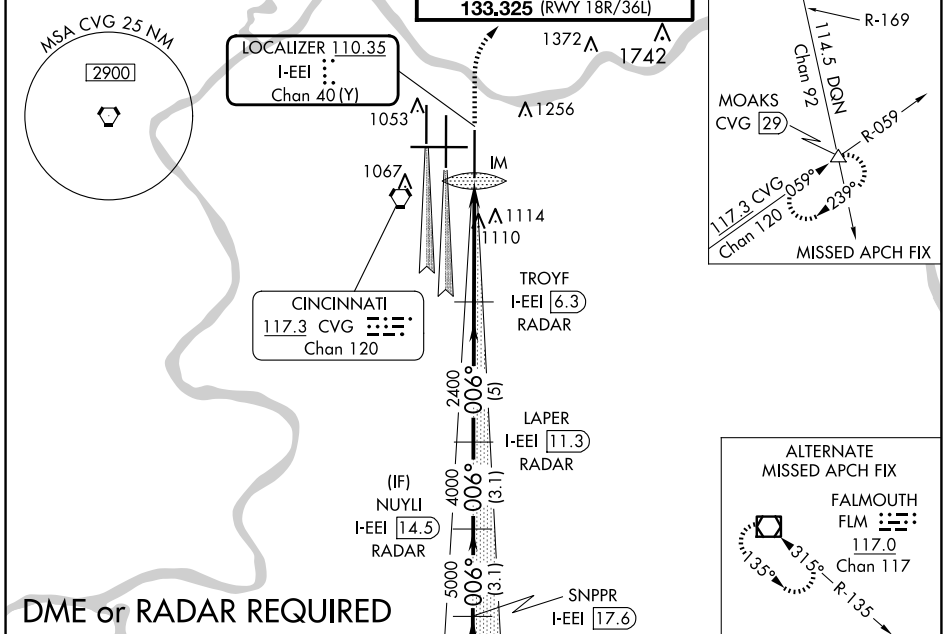
CINCINNATI/NORTHERN KENTUCKY INTL (CVG)

**Simultaneous approach authorized with Rwy 36C and 36L.**  
**DME or radar required.**

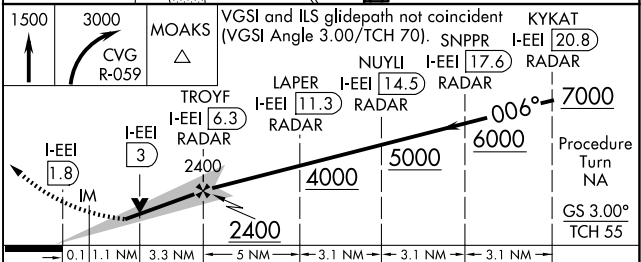
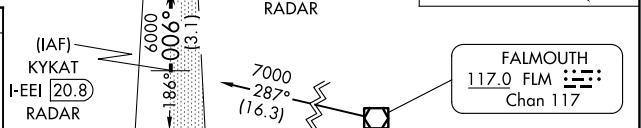
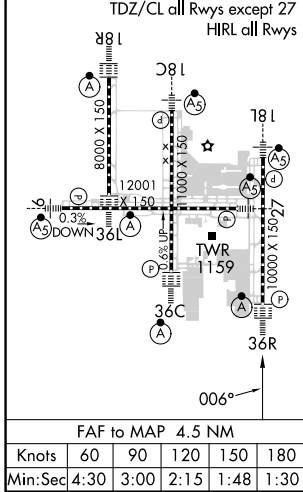
ALSF-2

**MISSED APPROACH:** Climb to 1500 then climbing right turn to 3000 via CVG R-059 to MOAKS Int/ CVG 29 DME and hold.

D-ATIS ARR <b>134.375</b> DEP <b>135.3</b>	CINCINNATI APP CON <b>119.7 363.15</b> (090°-269°) <b>123.875 363.15</b> (270°-089°)	CINCINNATI TOWER <b>118.975 360.85</b> (RWY 18L/36R) <b>118.3</b> (RWYS 18C/36C, 09/27) <b>133.325</b> (RWY 18R/36L)	GND CON <b>121.7</b>	CLNC DEL <b>127.175</b>	CPDLC
---	--	---	-------------------------	----------------------------	-------



ELEV <b>896</b>	<b>D</b>	TDZE <b>896</b>
-----------------	----------	-----------------



CATEGORY	A	B	C	D
S-ILS 36R	1096/18		200 (200-1/2)	
S-LOC 36R	1360/24	464 (500-1/2)	1360/50	464 (500-1)
CIRCLING	1460-1	564 (600-1)	1560-1 3/4 664 (700-1 3/4)	1560-2 664 (700-2)

SE-1, 20 MAR 2025 to 17 APR 2025

SE-1, 20 MAR 2025 to 17 APR 2025