

(JBNCH6.JBNCH) 24081

JBNCH SIX DEPARTURE (RNAV)

CINCINNATI/NORTHERN KENTUCKY INTL (CVG)
COVINGTON, KENTUCKY

RNAV 1 - DME/DME/IRU or GPS.

TOP ALTITUDE:

RADAR required for non-GPS equipped aircraft.

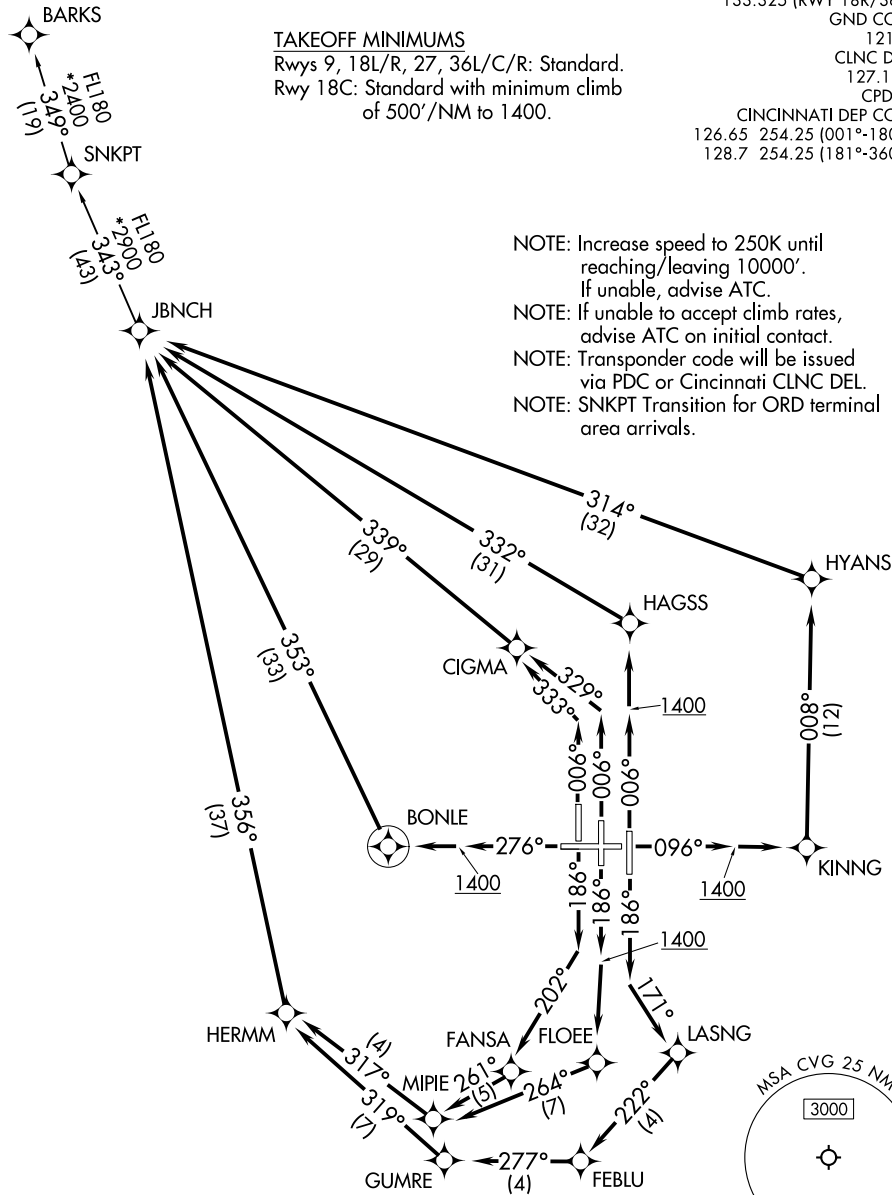
(JETS) 5000/(PROPS) 4000

D-ATIS DEP 135.3
 CINCINNATI TOWER
 118.3 (RWYS 18C/36C, 9/27)
 118.975 360.85 (RWY 18L/36R)
 133.325 (RWY 18R/36L)
 GND CON
 121.7
 CLNC DEL
 127.175
 CPDLC
 CINCINNATI DEP CON
 126.65 254.25 (001°-180°)
 128.7 254.25 (181°-360°)

TAKEOFF MINIMUMS

Rwys 9, 18L/R, 27, 36L/C/R: Standard.
 Rwy 18C: Standard with minimum climb
 of 500'/NM to 1400.

- NOTE: Increase speed to 250K until reaching/leaving 10000'.
- If unable, advise ATC.
- NOTE: If unable to accept climb rates, advise ATC on initial contact.
- NOTE: Transponder code will be issued via PDC or Cincinnati CLNC DEL.
- NOTE: SNKPT Transition for ORD terminal area arrivals.



NOTE: Chart not to scale.

(CONTINUED ON FOLLOWING PAGE)

SE-1, 20 MAR 2025 to 17 APR 2025

SE-1, 20 MAR 2025 to 17 APR 2025

JBNCH SIX DEPARTURE (RNAV)
(JBNCH6.JBNCH) 21MAR24

COVINGTON, KENTUCKY
CINCINNATI/NORTHERN KENTUCKY INTL (CVG)



DEPARTURE ROUTE DESCRIPTION

TAKEOFF RUNWAY 9: Climb on heading 096° to 1400, then direct KINNG, then on track 008° to HYANS, then on track 314° to JBNCH, thence

TAKEOFF RUNWAY 18L: Climb on heading 186° to intercept course 171° to LASNG, then on track 222° to FEBLU, then on track 277° to GUMRE, then on track 319° to HERMM, then on track 356° to JBNCH, thence

TAKEOFF RUNWAY 18C: Climb on heading 186° to 1400, then direct FLOEE, then on track 264° to MIPIE, then on track 317° to HERMM, then on track 356° to JBNCH, thence

TAKEOFF RUNWAY 18R: Climb on heading 186° to intercept course 202° to FANSA, then on track 261° to MIPIE, then on track 317° to HERMM, then on track 356° to JBNCH, thence

TAKEOFF RUNWAY 27: Climb on heading 276° to 1400, then direct BONLE, then on track 353° to JBNCH, thence

TAKEOFF RUNWAY 36L: Climb on heading 006° to intercept course 333° to CIGMA, then on track 339° to JBNCH, thence

TAKEOFF RUNWAY 36C: Climb on heading 006° to intercept course 329° to CIGMA, then on track 339° to JBNCH, thence

TAKEOFF RUNWAY 36R: Climb on heading 006° to 1400, then direct HAGSS, then on track 332° to JBNCH, thence

. . . . Turbojets: maintain 5000, all other aircraft: maintain 4000.
Expect clearance to filed altitude within ten minutes after departure.

BARKS TRANSITION (JBNCH6.BARKS)

SNKPT TRANSITION (JBNCH6.SNKPT)

SE-1, 20 MAR 2025 to 17 APR 2025

SE-1, 20 MAR 2025 to 17 APR 2025