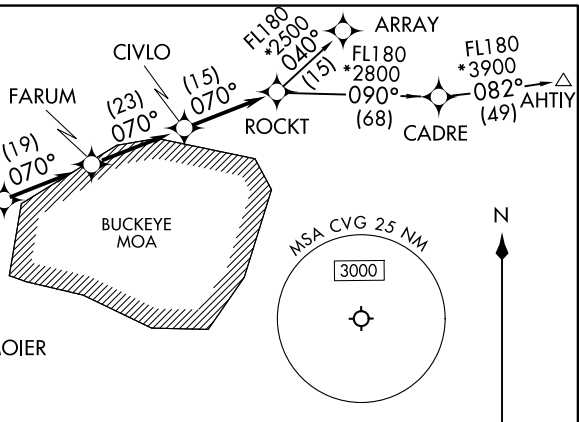
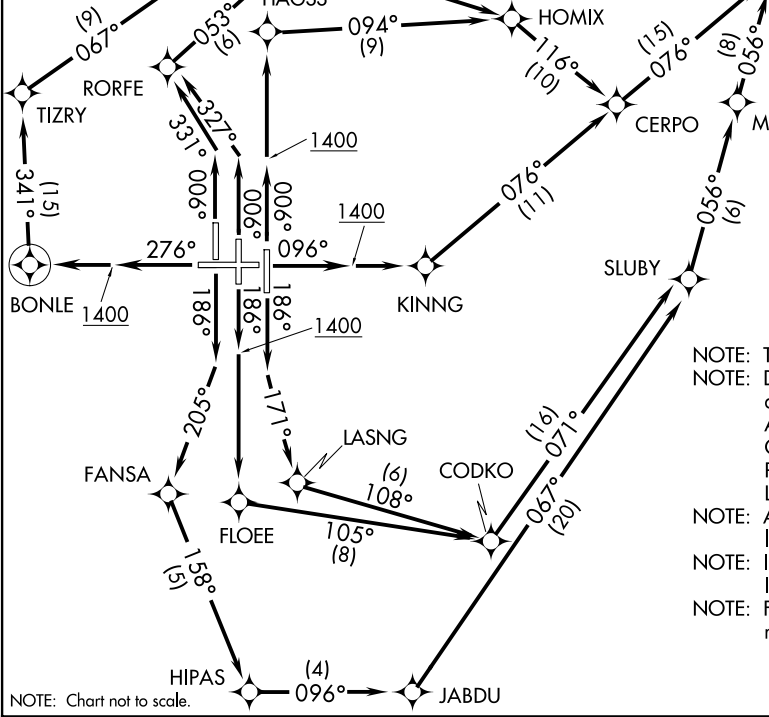


ROCKT3.ROCKT) 2413Z
ROCKT3.ROCKT) 16MAY24
CINCINNATI/NORTHERN KENTUCKY INTL (CVG)
COVINGTON, KENTUCKY

CINCINNATI DEP CON
126.65 254.25 (001°-180°)
128.7 254.25 (181°-360°)
CINCINNATI TOWER
118.3 (RWYS 18C/36C, 9/27)
118.975 360.85 (RWY 18L/36R)
133.325 (RWY 18R/36L)
GND CON 121.7
CLNC DEL 127.175
D-ATIS 135.3
CPDLC

**TOP ALTITUDE:
(JETS) 5000/(PROPS) 4000**
RNAV 1 - DME/DME/IRU or GPS.
RADAR required for non-GPS equipped aircraft.



TAKEOFF MINIMUMS:
Rwy 9, 18L/C/R, 27, 36L/C/R: Standard.

- NOTE: Transponder code will be issued via PDC or Cincinnati CLNC DEL.
- NOTE: Departure procedure limited to aircraft with the following destination airports and departure times:
Anytime - ABE, AGC, ALB, AVP, BDL, BKL, BOS, BWI, CAK, CGF, CLE, LNN, LPR, MDT, MHT, PHL, PIT, PNE, PVD, PWM, SWF, TTN, UNV, and overseas flights.
LGA between 1000-1800 UTC.
- NOTE: ARRAY TRANSITION (ROCKT3.ARRAY) limited to aircraft landing: BKL, CAK, CLE, CGF, LNN, LPR.
- NOTE: Increase speed to 250K until reaching/leaving 10000'. If unable, advise ATC.
- NOTE: For non-GPS equipped aircraft, SGH and FLM DMEs must be operational.

(CONTINUED ON FOLLOWING PAGE)

NOTE: Chart not to scale.

CINCINNATI/NORTHERN KENTUCKY INTL (CVG)
COVINGTON, KENTUCKY
AL-655 (FAA)



DEPARTURE ROUTE DESCRIPTION

TAKEOFF RUNWAY 9: Climb on heading 096° to 1400, then direct KINNG, then on track 076° to CERPO, then on track 076° to WADAL, thence...

TAKEOFF RUNWAY 18L: Climb on heading 186° to intercept course 171° to LASNG, then on track 108° to CODKO, then on track 071° to SLUBY, then on track 056° to MOIER, then on track 056° to WADAL, thence...

TAKEOFF RUNWAY 18C: Climb on heading 186° to 1400, then direct FLOEE, then on track 105° to CODKO, then on track 071° to SLUBY, then on track 056° to MOIER, then on track 056° to WADAL, thence...

TAKEOFF RUNWAY 18R: Climb on heading 186° to intercept course 205° to FANSA, then on track 158° to HIPAS, then on track 096° to JABDU, then on track 067° to SLUBY, then on track 056° to MOIER, then on track 056° to WADAL, thence...

TAKEOFF RUNWAY 27: Climb on heading 276° to 1400 then direct BONLE, then on track 341° to TIZRY, then on track 067° to WANGA, then on track 108° to WADAL, thence...

TAKEOFF RUNWAY 36L: Climb on heading 006° to intercept course 331° to RORFE, then on track 053° to SUVBE, then on track 121° to HOMIX, then on track 116° to CERPO, then on track 076° to WADAL, thence...

TAKEOFF RUNWAY 36C: Climb on heading 006° to intercept course 327° to RORFE, then on track 053° to SUVBE, then on track 121° to HOMIX, then on track 116° to CERPO, then on track 076° to WADAL, thence...

TAKEOFF RUNWAY 36R: Climb on heading 006° to 1400, then direct HAGSS, then on track 094° HOMIX, then on track 116° to CERPO, then on track 076° to WADAL, thence...

...on depicted route to ROCKT. Turbojet maintain 5000, all other aircraft maintain 4000. Expect clearance to filed altitude within ten minutes after departure.

AHTIY TRANSITION (ROCKT3.AHTIY)

ARRAY TRANSITION (ROCKT3.ARRAY)

SE-1, 20 MAR 2025 to 17 APR 2025

SE-1, 20 MAR 2025 to 17 APR 2025