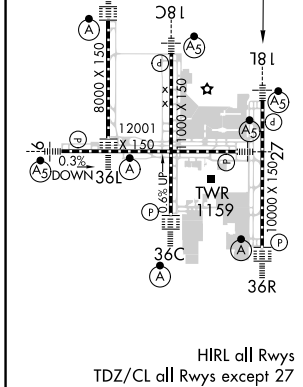
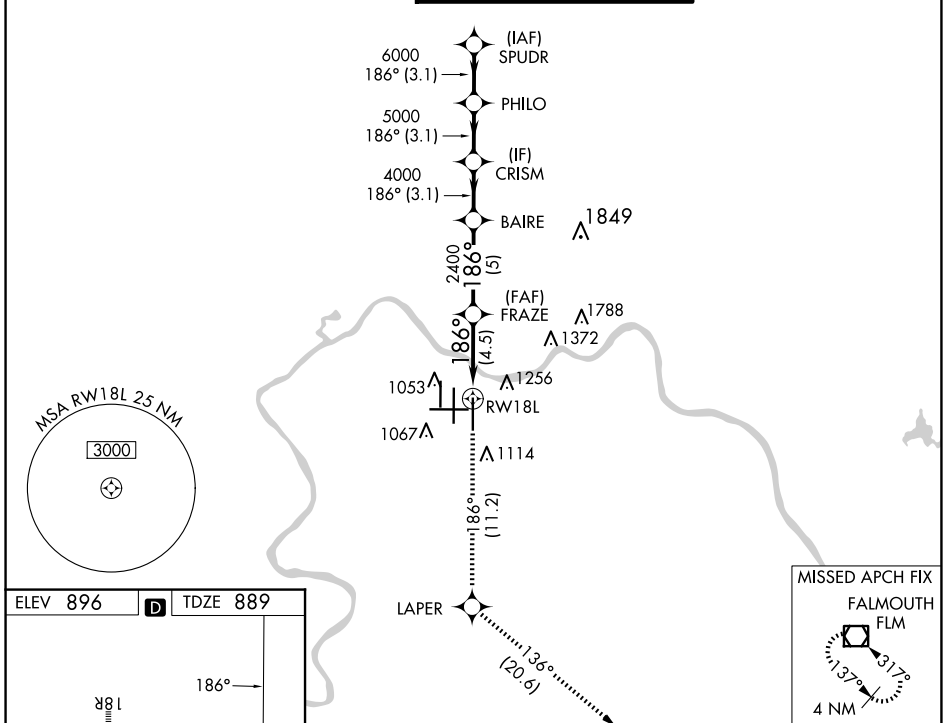


APP CRS	Rwy Idg	<b>10000</b>
<b>186°</b>	TDZE	<b>889</b>
	Apt Elev	<b>896</b>

# RNAV (RNP) Z RWY 18L

CINCINNATI/NORTHERN KENTUCKY INTL (CVG)

RNP AR APCH - GPS.		MALSR	MISSED APPROACH: Climb to 3000 on track 186° to LAPER and on track 136° to FLM VOR/DME and hold.		
Simultaneous approach authorized. For uncompensated Baro-VNAV systems, procedure NA below -16°C or above 47°C. For inop ALS, increase RNP 0.25 all Cats visibility to RVR 6000, RNP 0.30 all Cats visibility to 1½ SM.			GND CON	CLNC DEL	CPDLC
D-ATIS	CINCINNATI APP CON	CINCINNATI TOWER			
ARR	DEP	<b>119.7 363.15</b> (090°-269°)	<b>118.975 360.85</b> (RWY 18L/36R)		
<b>134.375</b>	<b>135.3</b>	<b>123.875 363.15</b> (270°-089°)	<b>118.3</b> (RWYS 18C/36C, 09/27)	<b>121.7</b>	<b>127.175</b>
			<b>133.325</b> (RWY 18R/36L)		



3000	tr 186°	LAPER	tr 136°	FLM	VGSI and RNAV glidepath not coincident (VGSI Angle 3.00/TCH 71).
		FRAZE	BAIRE	CRISM	PHILO SPUDR
		2400	4000	5000	6000 7000
		RWY 18L			GP 3.00° TCH 55
		4.5 NM	5 NM	3.1 NM	3.1 NM
CATEGORY	A	B	C	D	
RNP 0.25 DA	1283/35 394 (400-¾)				
RNP 0.30 DA	1472-1¼ 583 (600-1¼)				

**AUTHORIZATION REQUIRED**

SE-1, 20 MAR 2025 to 17 APR 2025

SE-1, 20 MAR 2025 to 17 APR 2025