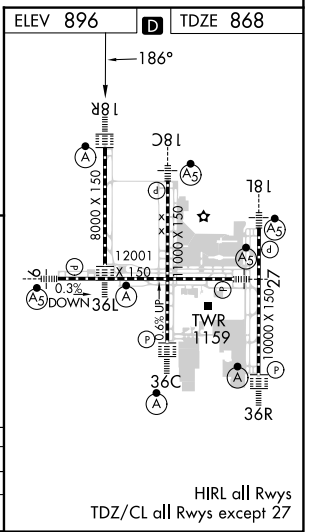
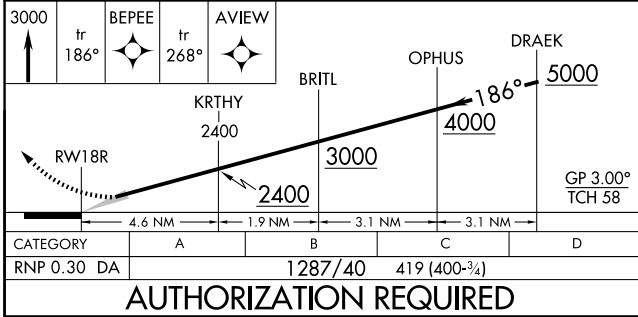
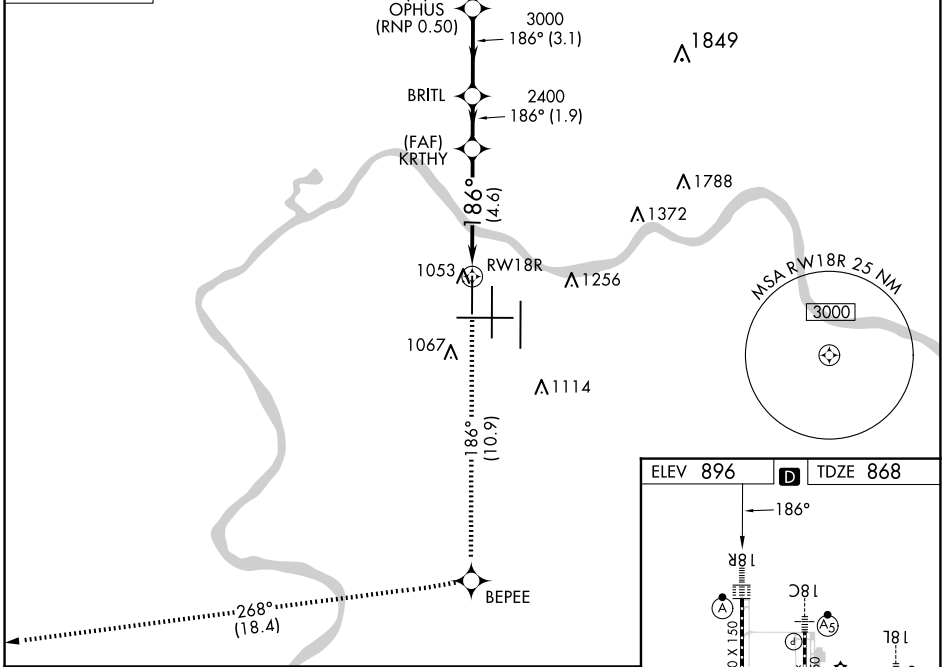


APP CRS	Rwy Idg	8000
186°	TDZE	868
	Apt Elev	896

RNAV (RNP) Z RWY 18R

CINCINNATI/NORTHERN KENTUCKY INTL (CVG)

RNP AR APCH - GPS.		ALSF-2 	MISSED APPROACH: Climb to 3000 on track 186° BEPEE and on track 268° to AVIEW and hold.		
Use of FD or AP required during simultaneous operations. Simultaneous approach authorized with Rwy 18C/L. For uncompensated Baro-VNAV systems, procedure NA below -17°C or above 54°C. For inop ALS, increase RNP 0.30 all Cats visibility to RVR 6000.	CINCINNATI APP CON ARR 119.7 363.15 (090°-269°) DEP 123.875 363.15 (270°-089°)		CINCINNATI TOWER 118.975 360.85 (RWY 18L/36R) 118.3 (RWYS 18C/36C, 09/27) 133.325 (RWY 18R/36L)		
D-ATIS ARR 134.375 DEP 135.3		GND CON	CINC DEL	CPDLC	
GND CON 121.7		CINC DEL 127.175			



COVINGTON, KENTUCKY CINCINNATI/NORTHERN KENTUCKY INTL (CVG)
 Orig-D 24MAR22 39°03'N-84°40'W **RNAV (RNP) Z RWY 18R**

SE-1, 20 MAR 2025 to 17 APR 2025

SE-1, 20 MAR 2025 to 17 APR 2025

AUTHORIZATION REQUIRED

HIRL all Rwys
TDZ/CL all Rwys except 27