

RNAV (RNP) Z RWY 27

CINCINNATI/NORTHERN KENTUCKY INTL (CVG)

APP CRS	Rwy Idg	12000
276°	TDZE	875
	Apt Elev	896

RNP AR APCH - GPS

▽ For uncompensated Baro-VNAV systems, procedure NA below -16° C or above 54° C. For inop ALS, increase RNP 0.23 all Cats visibility to 1½ SM and increase RNP 0.30 all Cats visibility to 1¾ SM.
▲ NA

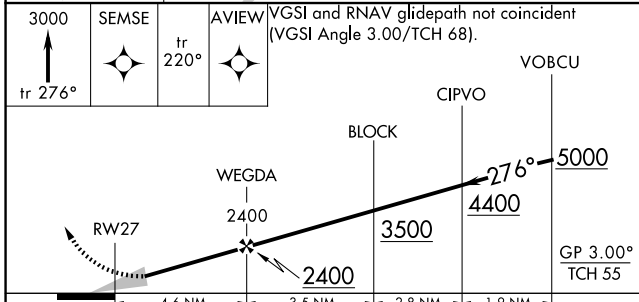
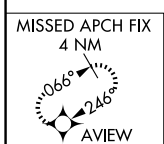
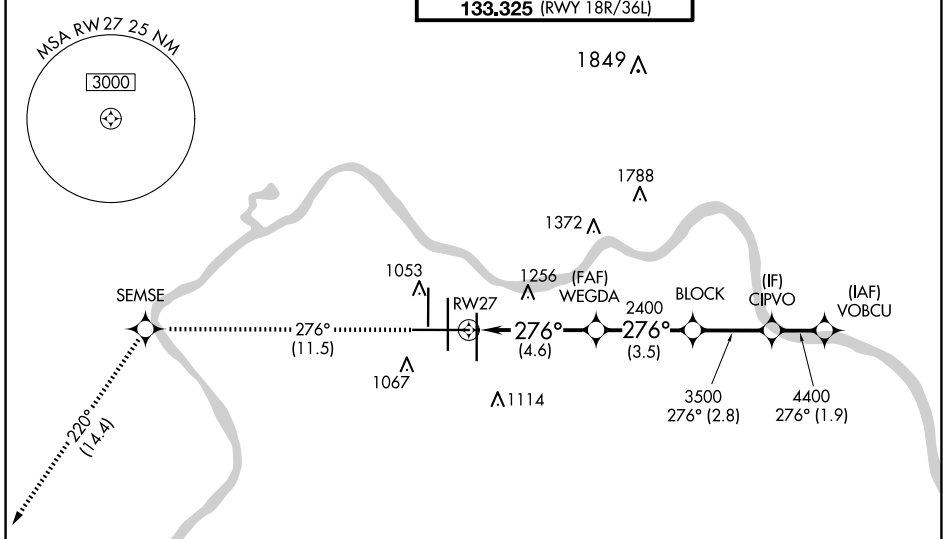


MISSED APPROACH: Climb to 3000 on track 276° SEMSE and on track 220° to AVIEW and hold.

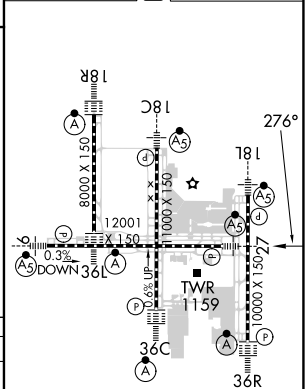
D-ATIS	CINCINNATI APP CON
ARR 134.375 DEP 135.3	119.7 363.15 (090°-269°) 123.875 363.15 (270°-089°)

CINCINNATI TOWER
118.975 360.85 (RWY 18L/36R) 118.3 (RWYS 18C/36C, 09/27) 133.325 (RWY 18R/36L)

GND CON	CLNC DEL	CPDLC
121.7	127.175	



ELEV 896	D	TDZE 875
----------	----------	----------



CATEGORY	A	B	C	D
RNP 0.15 DA		1296/40	421 (500-¾)	
RNP 0.23 DA		1378/55	503 (500-1)	
RNP 0.30 DA		1445-1¼	570 (600-1¼)	

AUTHORIZATION REQUIRED

HIRL all Rwys
TDZ/CL all Rwys except 27

SE-1, 20 MAR 2025 to 17 APR 2025

SE-1, 20 MAR 2025 to 17 APR 2025