

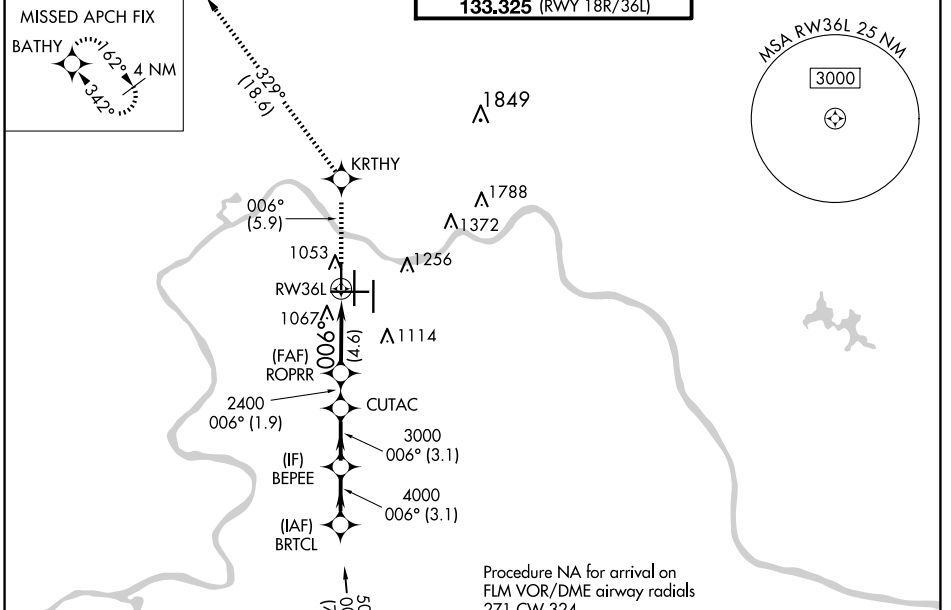
# RNAV (RNP) Z RWY 36L

CINCINNATI/NORTHERN KENTUCKY INTL (CVG)

APP CRS	Rwy Idg	<b>8000</b>
<b>006°</b>	TDZE	<b>873</b>
	Apt Elev	<b>896</b>

RNP AR APCH - GPS.	ALSF-2	MISSED APPROACH: Climb to 3000 on track 006° to KRTHY and track 329° to BATHY and hold.
Simultaneous approach authorized. For uncompensated Baro-VNAV systems, procedure NA below -17°C or above 54°C.		

D-ATIS	CINCINNATI APP CON	CINCINNATI TOWER	GND CON	CINC DEL	CPDLC
ARR DEP	<b>119.7 363.15</b> (090°-269°)	<b>118.975 360.85</b> (RWY 18L/36R)	<b>121.7</b>	<b>127.175</b>	
<b>134.375 135.3</b>	<b>123.875 363.15</b> (270°-089°)	<b>118.3</b> (RWYS 18C/36C, 09/27)			
		<b>133.325</b> (RWY 18R/36L)			



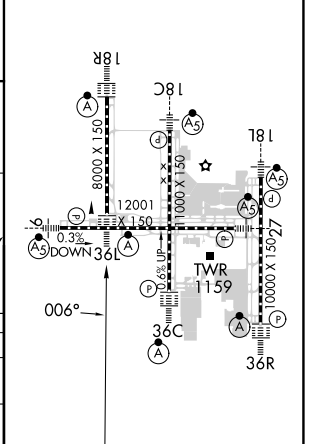
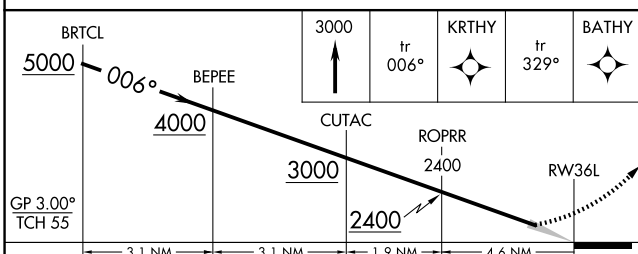
SE-1, 20 MAR 2025 to 17 APR 2025

SE-1, 20 MAR 2025 to 17 APR 2025

Procedure NA for arrival on FLM VOR/DME airway radials 271 CW 324.

ELEV 896	<b>D</b>	TDZE 873
----------	----------	----------

HIRL all Rws  
TDZ/CL all Rws except 27



CATEGORY	A	B	C	D
RNP 0.30 DA		1264/35	391 (400-5%)	
<b>AUTHORIZATION REQUIRED</b>				