

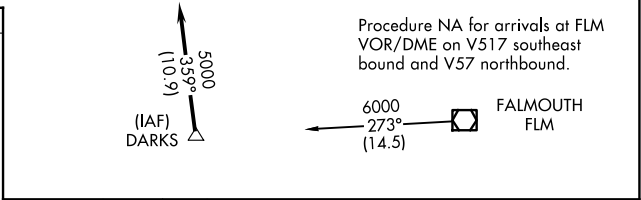
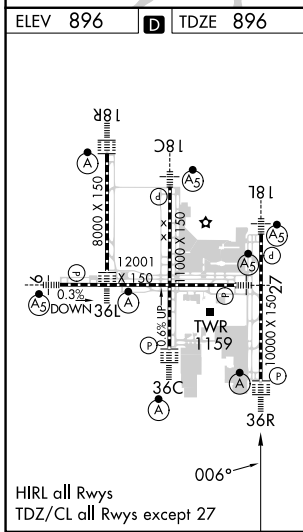
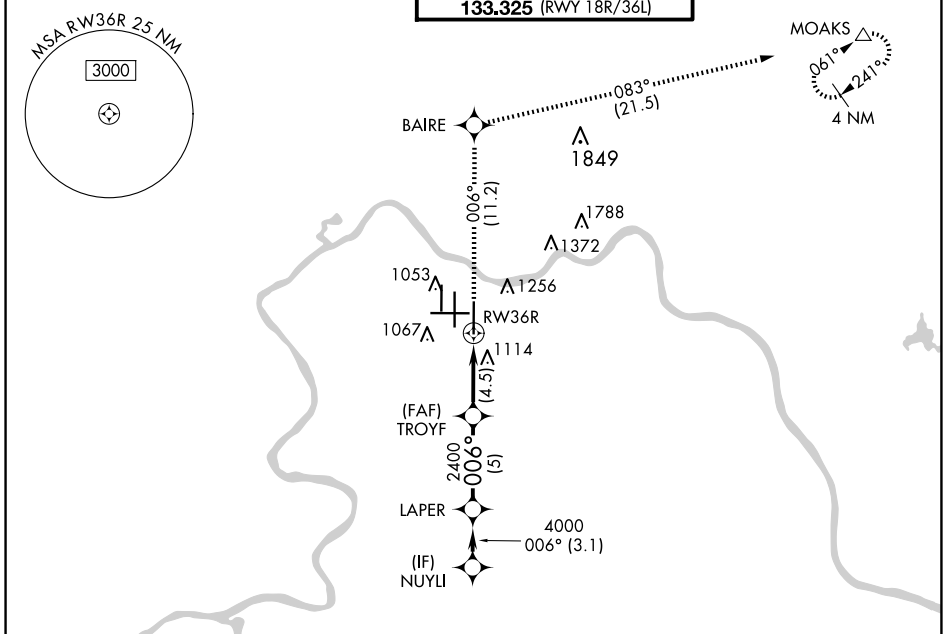
APP CRS	Rwy Idg	10000
006°	TDZE	896
	Apt Elev	896

RNAV (RNP) Z RWY 36R

CINCINNATI/NORTHERN KENTUCKY INTL (CVG)

RNP AR APCH - GPS.	ALSF-2	MISSED APPROACH: Climb to 3000 on track 006° to BAIRE and on track 083° to MOAKS and hold.
<p>Simultaneous approach authorized. For uncompensated Baro-VNAV systems, procedure NA below -17°C or above 54°C.</p>		

D-ATIS	CINCINNATI APP CON	CINCINNATI TOWER	GND CON	CLNC DEL	CPDLC
ARR 134.375 DEP 135.3	119.7 363.15 (090°-269°) 123.875 363.15 (270°-089°)	118.975 360.85 (RWY 18L/36R) 118.3 (RWYS 18C/36C, 09/27) 133.325 (RWY 18R/36L)	121.7	127.175	



3000	tr 006°	BAIRE	tr 083°	MOAKS	VGSI and RNAV glidepath not coincident (VGSI Angle 3.00/TCH 70). NUYYI
					LAPER
					5000
					4000
					2400
					4.5 NM
					5 NM
					3.1 NM
CATEGORY	A	B	C	D	
RNP 0.30 DA	1329/40		433 (500-¾)		
AUTHORIZATION REQUIRED					

SE-1, 20 MAR 2025 to 17 APR 2025

SE-1, 20 MAR 2025 to 17 APR 2025