

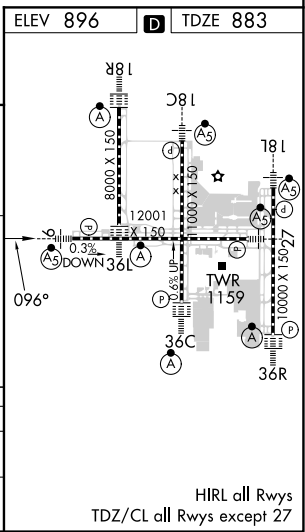
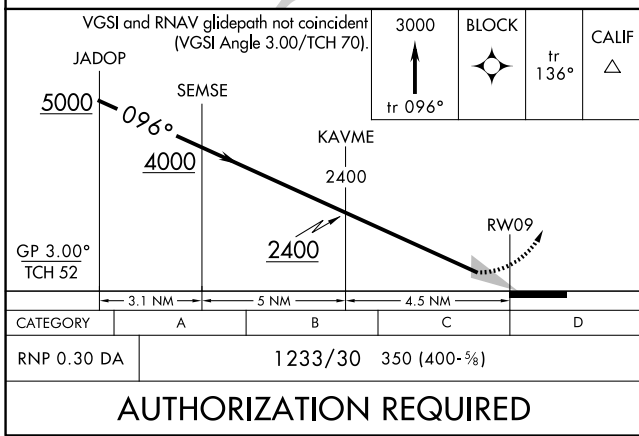
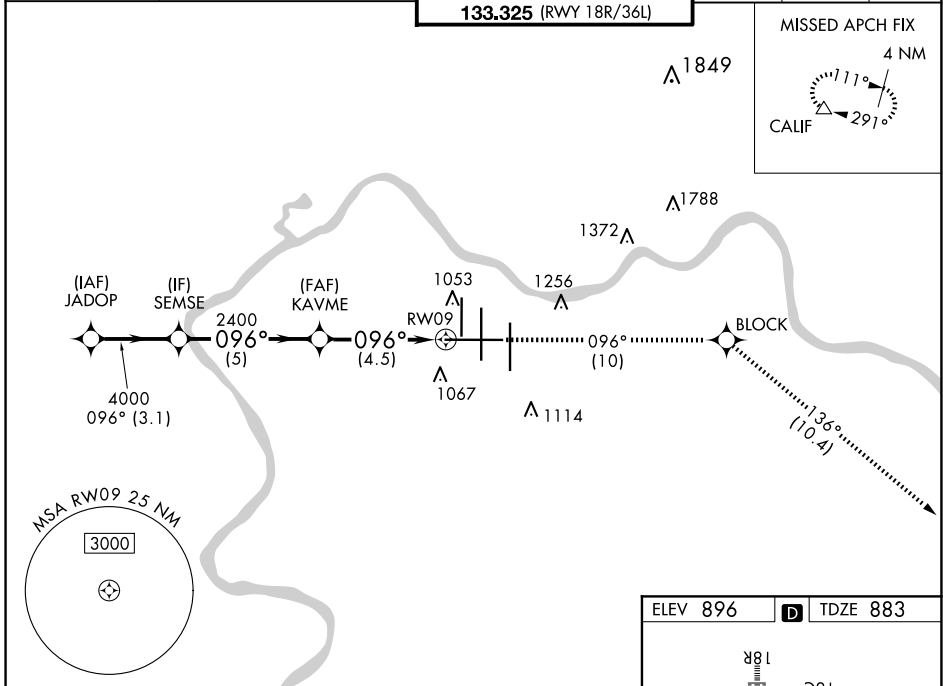
APP CRS	Rwy Idg	<b>11640</b>
<b>096°</b>	TDZE	<b>883</b>
	Apt Elev	<b>896</b>

# RNAV (RNP) Z RWY 9

CINCINNATI/NORTHERN KENTUCKY INTL (CVG)

RNP AR APCH - GPS.		MALSR	MISSED APPROACH: Climb to 3000 on track 096° to BLOCK and track 136° to CALIF and hold.
For uncompensated Baro-VNAV systems, procedure NA below -17°C or above 54°C. For inop ALS, increase RNP 0.30 visibility to RVR 5500.			

D-ATIS	CINCINNATI APP CON	CINCINNATI TOWER	GND CON	CLNC DEL	CPDLC
ARR	DEP	<b>119.7 363.15</b> (090°-269°)	<b>121.7</b>	<b>127.175</b>	
<b>134.375</b>	<b>135.3</b>	<b>118.975 360.85</b> (RWY 18L/36R)			
		<b>118.3</b> (RWYS 18C/36C, 09/27)			
		<b>133.325</b> (RWY 18R/36L)			



SE-1, 20 MAR 2025 to 17 APR 2025

SE-1, 20 MAR 2025 to 17 APR 2025

**AUTHORIZATION REQUIRED**

HIRL all Rwys  
TDZ/CL all Rwys except 27