

WAAS CH 49099 W36A	APP CRS 006°	Rwy Idg TDZE Apt Elev	8000 873 896
--	------------------------	-----------------------------	---

RNAV (GPS) Y RWY 36L

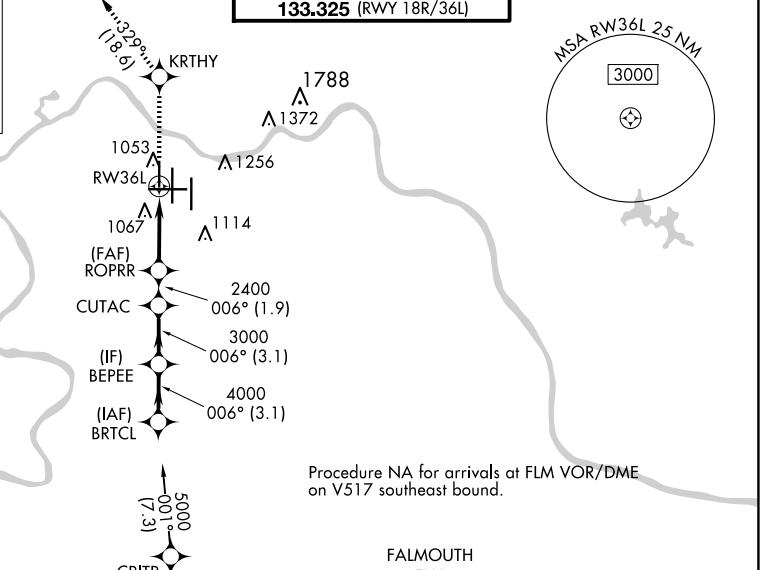
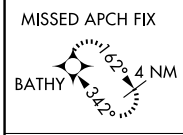
CINCINNATI/NORTHERN KENTUCKY INTL (CVG)

RNP APCH - GPS.

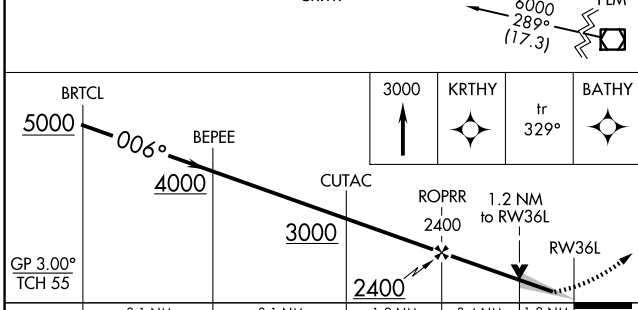
▼ For uncompensated Baro-VNAV systems, LNAV/VNAV NA below -16°C or above 54°C. Simultaneous approach authorized with Rwy 36C/R. LNAV procedure NA during simultaneous operations. Use of FD or AP providing RNAV track guidance required during simultaneous operations.

ALSF-2
MISSED APPROACH: Climb to 3000 direct KRTHY and on 329° track to BATHY and hold.

D-ATIS ARR 134.375 DEP 135.3	CINCINNATI APP CON 119.7 363.15 (090°-269°) 123.875 363.15 (270°-089°)	CINCINNATI TOWER 118.975 360.85 (RWY 18L/36R) 118.3 (RWYS 18C/36C, 09/27) 133.325 (RWY 18R/36L)	GND CON 121.7	CLNC DEL 127.175	CPDLC
--	--	---	-------------------------	----------------------------	-------

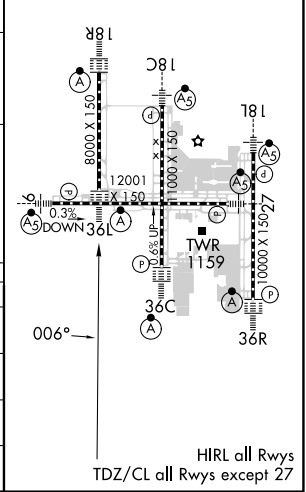


Procedure NA for arrivals at FLM VOR/DME on V517 southeast bound.



ELEV 896	TDZE 873
----------	----------

CATEGORY	A	B	C	D
LPV DA		1073/18	200 (200-½)	
LNAV/VNAV DA		1383/55	510 (500-1)	
LNAV MDA	1300/24	427 (500-½)	1300/40	427 (500-¾)
CIRCLING	1460-1	564 (600-1)	1560-1¾ 664 (700-1¾)	1560-2 664 (700-2)



SE-1, 20 MAR 2025 to 17 APR 2025

SE-1, 20 MAR 2025 to 17 APR 2025