

(GIDGT2.GIDGT) 27JAN22  
 GIDGT TWO DEPARTURE (RNAV) Departure Routes

LAS VEGAS, NEVADA  
 HARRY REID INTL (LAS)

D-ATIS  
 132.4  
 CLNC DEL  
 118.0  
 CPDLC  
 GND CON  
 121.1 270.8 E of 1R/19L  
 121.9 254.3 W of 1L/19R  
 LAS VEGAS TOWER  
 118.75 257.8 (Rwys 1L/19R, 1R/19L)  
 119.9 257.8 (Rwys 8L/26R, 8R/26L)  
 LAS VEGAS DEP CON  
 133.95 353.7

**TOP ALTITUDE:  
FL190**



### DEPARTURE ROUTE DESCRIPTION

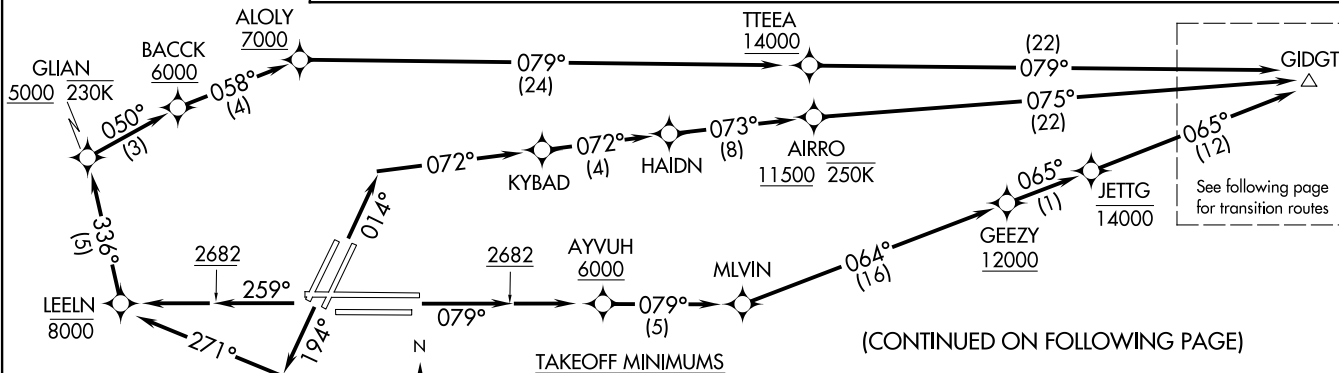
**TAKEOFF RUNWAYS 1L/R:** Climb on heading 014° to intercept course 072° to KYBAD, then on track 072° to HAIDN, then on track 073° to cross AIRRO at or above 11500 and at or below 250K, then on track 075° to GIDGT, thence. . .

**TAKEOFF RUNWAYS 8L/R:** Climb on heading 079° to 2682, then direct AYYUH, cross AYYUH at or above 6000, then on track 079° to MLVIN, then on track 064° to cross GEEZY at or above 12000, then on track 065° to cross JETTG at or below 14000, then on track 065° to GIDGT, thence. . .

**TAKEOFF RUNWAYS 19L/R:** Climb on heading 194° to intercept course 271° to cross LEELN at or below 8000, then on track 336° to cross GLIAN at or above 5000 and at or below 230K, then on track 050° to cross BACCK at or above 6000, then on track 058° to cross ALOLY at or above 7000, then on track 079° to cross TTEEA at or above 14000, then on track 079° to GIDGT, thence. . .

**TAKEOFF RUNWAYS 26L/R:** Climb on heading 259° to 2682, then direct LEELN to cross LEELN at or below 8000, then on track 336° to cross GLIAN at or above 5000 and at or below 230K, then on track 050° to cross BACCK at or above 6000, then on track 058° to cross ALOLY at or above 7000, then on track 079° to cross TTEEA at or above 14000, then on track 079° to GIDGT, thence. . .

. . . on (transition). Maintain FL190. Expect filed altitude 10 minutes after departure.



#### TAKEOFF MINIMUMS

- Rwy 1L: Standard with minimum climb of 500' per NM to 2682, then 286' per NM to 4900.
- Rwy 1R: Standard with minimum climb of 500' per NM to 2682, then 295' per NM to 4900.
- Rwys 8L/R, 19L/R: Standard with minimum climb of 500' per NM to 2682.
- Rwy 26L: Standard with minimum climb of 500' per NM to 2682, then 204' per NM to 4100.
- Rwy 26R: Standard with minimum climb of 500' per NM to 2682, then 271' per NM to 4100.

NOTE: DME/DME/IRU or GPS required.  
 NOTE: RNAV 1.  
 NOTE: RADAR required.  
 NOTE: Turbojet only.  
 NOTE: Chart not to scale.

(CONTINUED ON FOLLOWING PAGE)

(GIDGT2.GIDGT) 24249  
 GIDGT TWO DEPARTURE (RNAV) Departure Routes

AL-662 (FAA)  
 HARRY REID INTL (LAS)  
 LAS VEGAS, NEVADA

(GIDGT2.GIDGT) 27JAN22

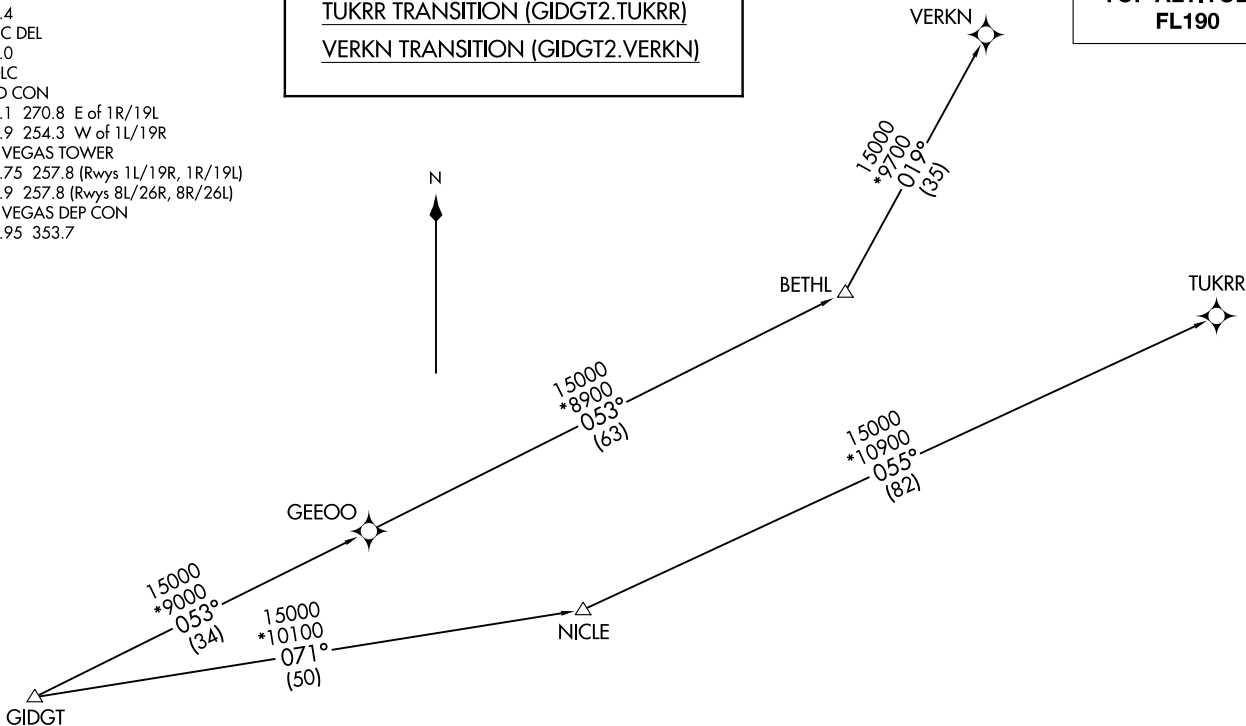
GIDGT TWO DEPARTURE (RNAV) Transition Routes

HARRY REID INTL (LAS)  
LAS VEGAS, NEVADA

D-ATIS  
132.4  
CLNC DEL  
118.0  
CPDLC  
GND CON  
121.1 270.8 E of 1R/19L  
121.9 254.3 W of 1L/19R  
LAS VEGAS TOWER  
118.75 257.8 (Rwys 1L/19R, 1R/19L)  
119.9 257.8 (Rwys 8L/26R, 8R/26L)  
LAS VEGAS DEP CON  
133.95 353.7

TUKRR TRANSITION (GIDGT2.TUKRR)  
VERKN TRANSITION (GIDGT2.VERKN)

**TOP ALTITUDE:  
FL190**



NOTE: DME/DME/IRU or GPS required.  
NOTE: RNAV 1.  
NOTE: RADAR required.  
NOTE: Turbojet only.  
NOTE: Chart not to scale.

(GIDGT2.GIDGT) 24249

Al-662 (FAA)  
GIDGT TWO DEPARTURE (RNAV) Transition Routes

HARRY REID INTL (LAS)  
LAS VEGAS, NEVADA