

LOC/DME FAS <b>110.3</b> Chan <b>40</b>	APP CRS <b>259°</b>	Rwy Idg 26R 26L <b>12638 10526</b> TDZE <b>2067 2069</b> Apt Elev <b>2181 2181</b>
---	------------------------	--

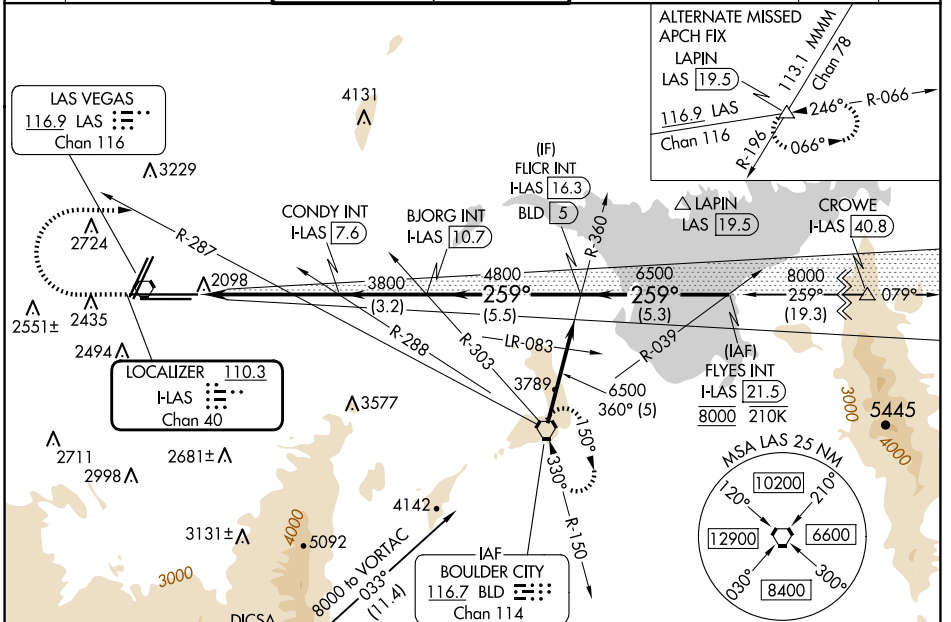
# ILS Z or LOC Z RWY 26R

HARRY REID INTL (LAS)

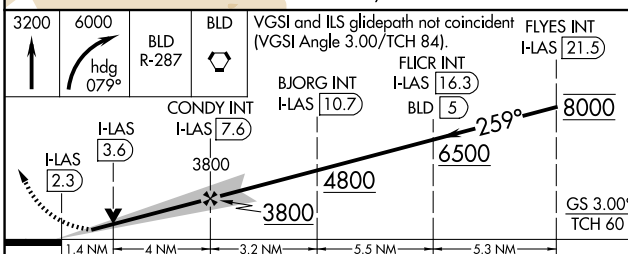
**⚠** For inop ALS, increase S-ILS-26R all Cats visibility to ½ SM, S-LOC-26R Cat E visibility to 1 ½ SM. Inop table does not apply to sidestep 26L.

MALS Rwy 26R 	MALSF Rwy 26L 	MISSED APPROACH: Climb to 3200 then climbing right turn to 6000 on heading 079° and on BLD R-287 to BLD VORTAC and hold, continue climb-in-hold to 6000.
------------------	-------------------	--

D-ATIS <b>132.4</b>	LAS VEGAS APP CON <b>125.025 379.15</b> (West) <b>119.775 282.2</b> (East)	LAS VEGAS TOWER <b>118.75 257.8</b> (Rwy 1L/19R, 1R/19L) <b>119.9 257.8</b> (Rwy 8L/26R, 8R/26L)	GND CON <b>121.1 270.8</b> E of 1R/19L <b>121.9 254.3</b> W of 1L/19R	CLNC DEL <b>118.0</b>	CPDLC
------------------------	--	--	---	--------------------------	-------



ELEV 2181	TDZE 26R 2067	TDZE 26L 2069
-----------	---------------	---------------



CATEGORY	A	B	C	D	E
S-ILS 26R	2334-¾ 267 (200-¾)				
S-LOC 26R	2560-¾ 493 (400-¾)		2560-1½ 493 (400-1½)		
SIDESTEP 26L	2560-1 491 (400-1)	2560-1½ 491 (400-1½)		2560-2 491 (400-2)	
CIRCLING	3020-1¼ 839 (900-1¼)	3060-1¼ 879 (900-1¼)	3100-2¾ 919 (1000-2¾)	3540-3 1359 (1400-3)	

Diagram details: TWR 2433; Runway dimensions: 10526 X 150 (0.9% UP), 14515 X 150; Taxiway dimensions: 10200, 12900, 6600, 8400; MSA LAS 25 NM; FAF to MAP 5.3 NM.

SW-4, 20 MAR 2025 to 17 APR 2025

SW-4, 20 MAR 2025 to 17 APR 2025