

RNAV 1 - DME/DME/IRU or GPS.  
RADAR required.

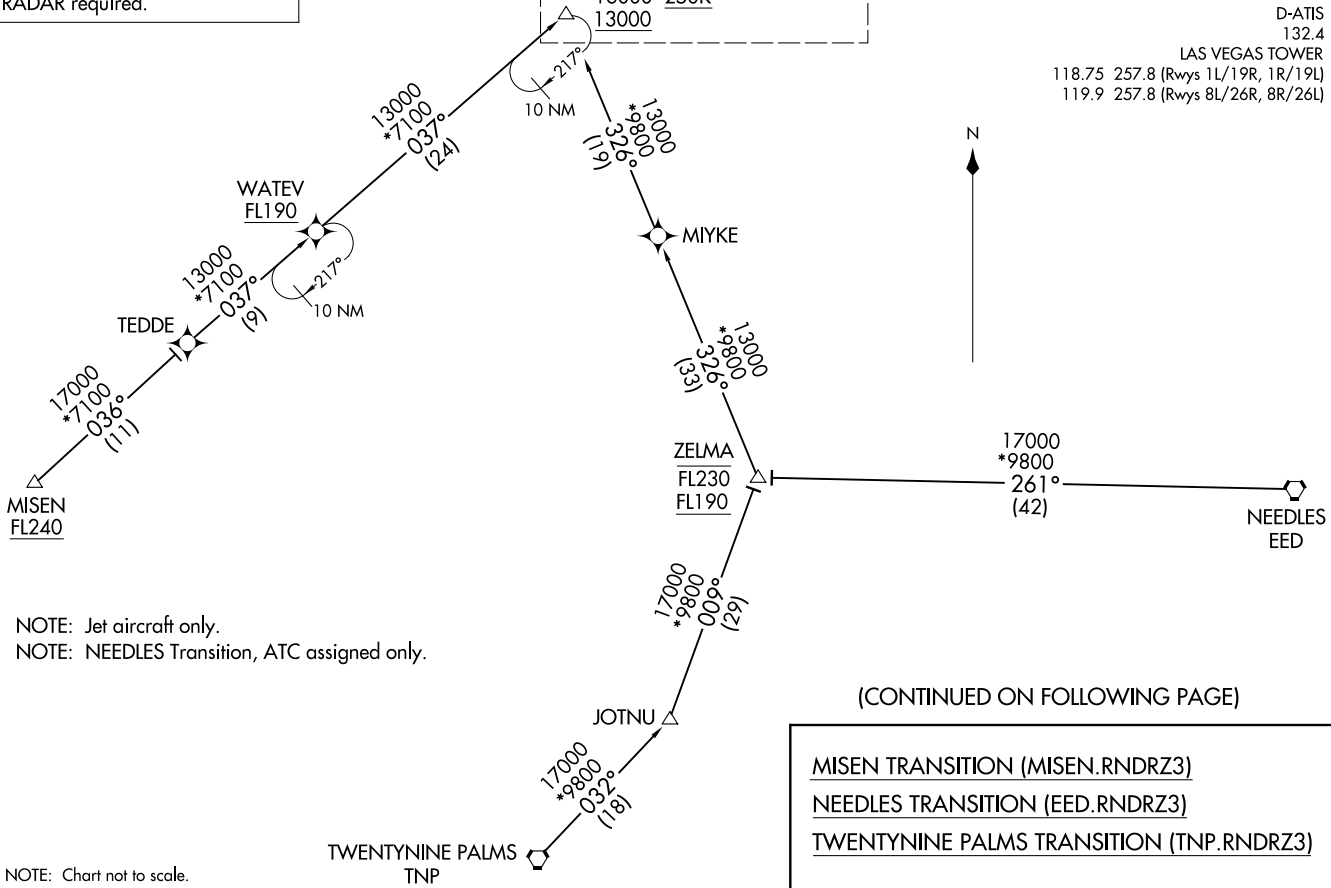
RNDRZ  
16000 250K  
13000  
See following page for Arrival Routes

LAS VEGAS APP CON  
125.025 379.15  
D-ATIS  
132.4  
LAS VEGAS TOWER  
118.75 257.8 (Rwys 1L/19R, 1R/19L)  
119.9 257.8 (Rwys 8L/26R, 8R/26L)

RNDRZ THREE ARRIVAL (RNAV) (RNDRZ.RNDRZ3) 31OCT24

Transition Routes

LAS VEGAS, NEVADA  
HARRY REID INTL (LAS)



(CONTINUED ON FOLLOWING PAGE)

MISEN TRANSITION (MISEN.RNDRZ3)  
NEEDLES TRANSITION (EED.RNDRZ3)  
TWENTYNINE PALMS TRANSITION (TNP.RNDRZ3)

(RNDRZ.RNDRZ3) 24305

Transition Routes

LAS VEGAS, NEVADA  
HARRY REID INTL (LAS)

LAS VEGAS APP CON  
125.025 379.15  
D-ATIS  
132.4  
LAS VEGAS TOWER  
118.75 257.8 (Rwys 1L/19R, 1R/19L)  
119.9 257.8 (Rwys 8L/26R, 8R/26L)

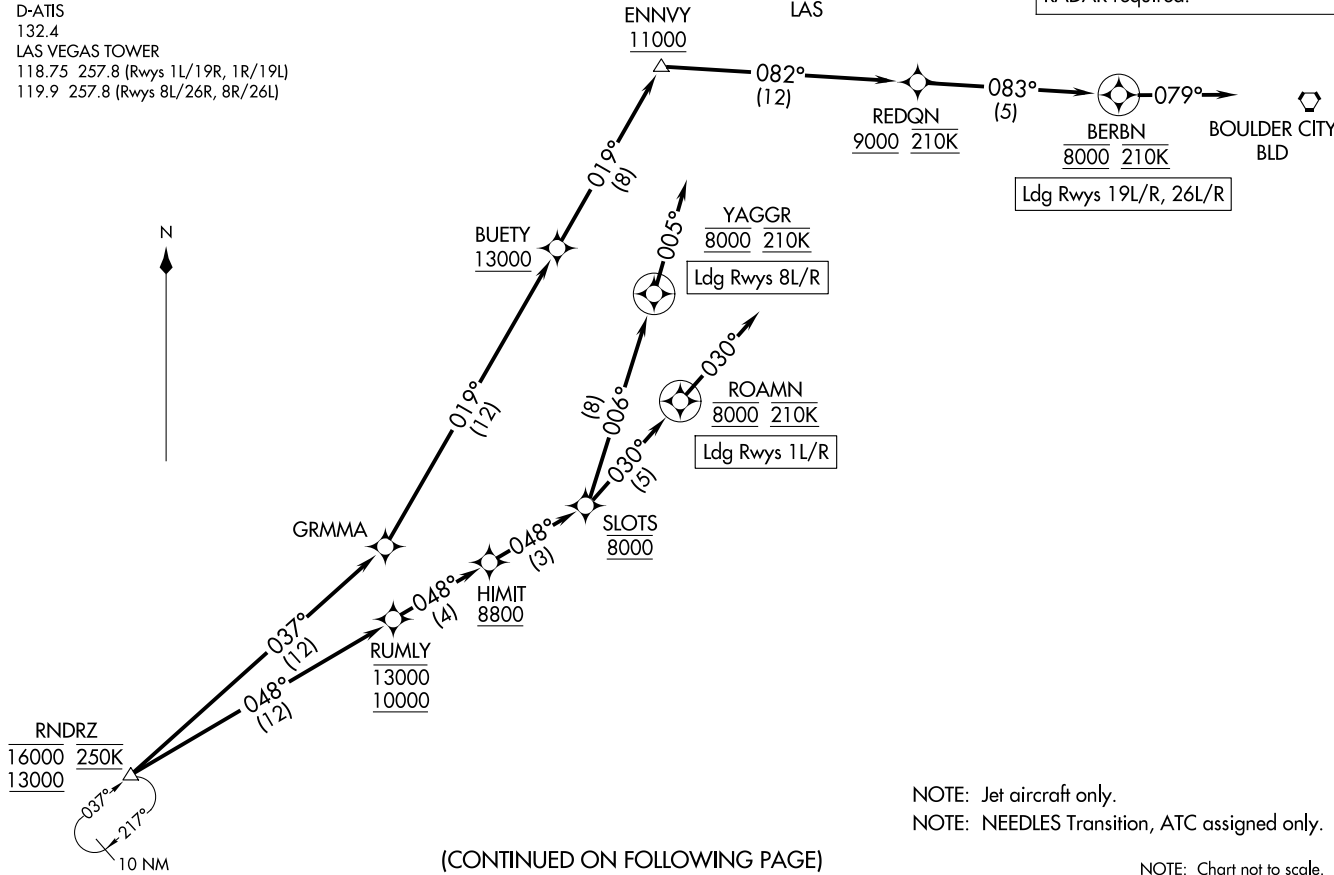
LAS VEGAS LAS

RNAV 1- DME/DME/IRU or GPS.  
RADAR required.

RNDRZ THREE ARRIVAL (RNAV)  
(RNDRZ.RNDRZ3) 31OCT24

Arrival Routes

LAS VEGAS, NEVADA  
HARRY REID INTL (LAS)



(CONTINUED ON FOLLOWING PAGE)

NOTE: Jet aircraft only.  
NOTE: NEEDLES Transition, ATC assigned only.

NOTE: Chart not to scale.

(RNDRZ.RNDRZ3) 24305  
RNDRZ THREE ARRIVAL (RNAV)

Arrival Routes

HARRY REID INTL (LAS)  
LAS VEGAS, NEVADA

AL-662 (FAA)

ARRIVAL ROUTE DESCRIPTION

LANDING RUNWAYS 1L/R: From RNDRZ on track 048° to cross RUMLY between 10000 and 13000, then on track 048° to cross HIMIT at or above 8800, then on track 048° to cross SLOTS at 8000, then on track 030° to cross ROAMN at 8000 and at 210K, then on track 030°. Expect RADAR vectors to final approach course.

LANDING RUNWAYS 8L/R: From RNDRZ on track 048° to cross RUMLY between 10000 and 13000, then on track 048° to cross HIMIT at or above 8800, then on track 048° to cross SLOTS at 8000, then on track 006° to cross YAGGR at 8000 and at 210K, then on track 005°. Expect RADAR vectors to final approach course.

LANDING RUNWAYS 19L/R, 26L/R: From RNDRZ on track 037° to GRMMA, then on track 019° to cross BUETY at or above 13000, then on track 019° to cross ENNVY at or above 11000, then on track 082° to cross REDQN at or above 9000 and at 210K, then on track 083° to cross BERBN at 8000 and at 210K, then on track 079°. Expect RADAR vectors to final approach course.

LOST COMMUNICATIONS

LANDING RUNWAY 8R: At YAGGR proceed on the RNAV (RNP) RWY 8R approach, if unable, proceed visually to intercept the final approach course; if unable, maintain 8000 proceed direct LAS VORTAC then maintain 7000 proceed to BLD VORTAC and then on the ILS or LOC RWY 26L approach.

SW-4, 20 MAR 2025 to 17 APR 2025

SW-4, 20 MAR 2025 to 17 APR 2025