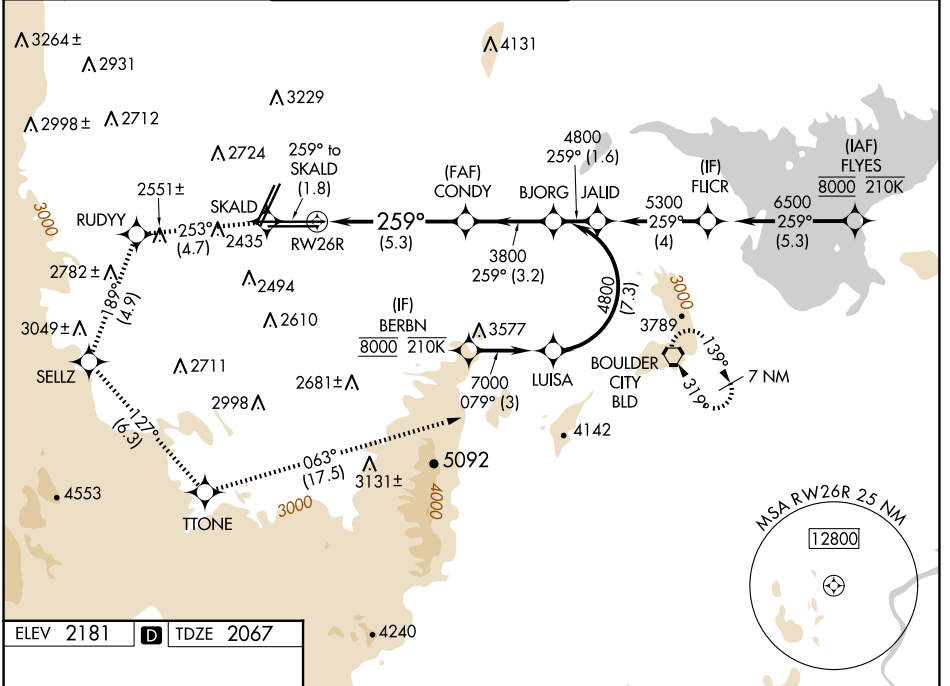


APP CRS	Rwy Idg	<b>12638</b>
<b>259°</b>	TDZE	<b>2067</b>
	Apt Elev	<b>2181</b>

# RNAV (RNP) RWY 26R

HARRY REID INTL (LAS)

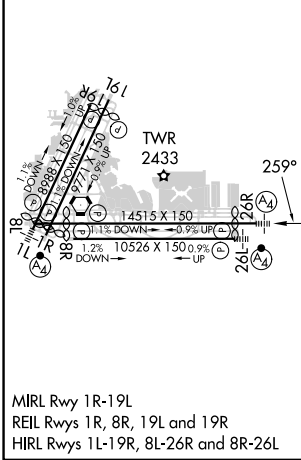
RNP AR APCH-GPS.		MALS	MISSED APPROACH: Cimb to 7000 on the RNAV missed approach route to BLD VORTAC and hold. *Missed approach requires minimum climb of 230 feet per NM to 3200.			
For uncompensated Baro-VNAV systems, procedure NA below -1°C or above 54°C.						
D-ATIS	LAS VEGAS APP CON	LAS VEGAS TOWER		GND CON	CLNC DEL	CPDLC
<b>132.4</b>	<b>125.025 379.15</b> (West) <b>119.775 282.2</b> (East)	<b>118.75 257.8</b> (Rwy 1L/19R, 1R/19L) <b>119.9 257.8</b> (Rwy 8L/26R, 8R/26L)		<b>121.1 270.8</b> E of 1R/19L <b>121.9 254.3</b> W of 1L/19R	<b>118.0</b>	



SW-4, 20 MAR 2025 to 17 APR 2025

SW-4, 20 MAR 2025 to 17 APR 2025

ELEV 2181		TDZE 2067
-----------	--	-----------



7000	SKALD	RUDYY	SELLZ	TITONE	BLD
↑		tr 253°		tr 189°	
tr 259°					
VGSI and RNAV glidepath not coincident (VGSI Angle 3.00/TCH 84). See planview for multiple IF locations.					
	CONDY	BJORG			
	3800	4800			
	RWY 26R				
	3800				
	5.3 NM		3.2 NM		
GP 3.00°	TCH 60				
CATEGORY	A	B	C	D	
RNP 0.30 DA*	2457-7/8 390 (300-7%)				
RNP 0.30 DA	2508-1 441 (400-1)				
<b>AUTHORIZATION REQUIRED</b>					