

APP CRS	Rwy ldg <b>10526</b>
<b>079°</b>	TDZE <b>2157</b>
	Apt Elev <b>2181</b>

# RNAV (RNP) RWY 8R

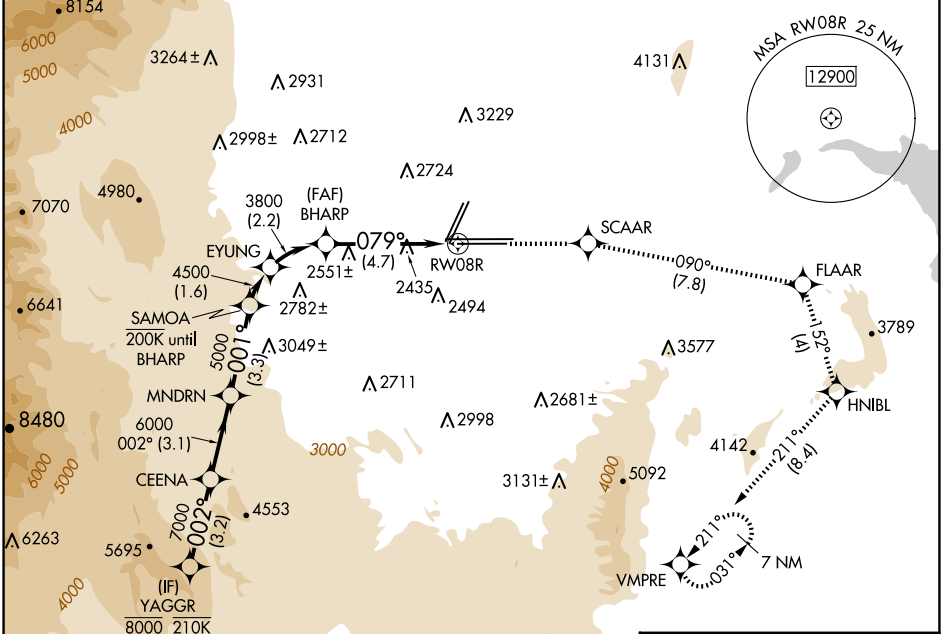
HARRY REID INTL (LAS)

RNP AR APCH. RF required.

MISSED APPROACH: Climb to 7000 on the RNAV missed approach route to VMPRE and hold, continue climb-in-hold to 7000.

▼ For uncompensated Baro-VNAV systems, procedure NA below 0°C or above 54°C.

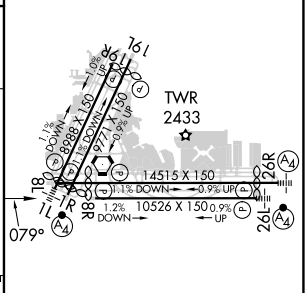
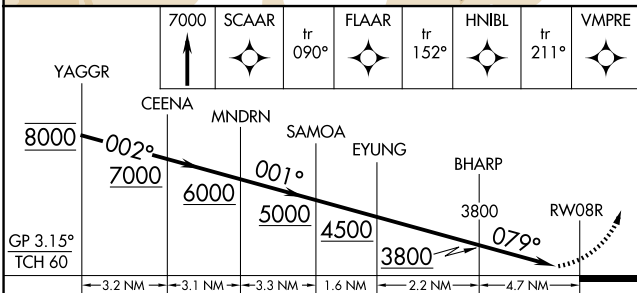
D-ATIS	LAS VEGAS APP CON	LAS VEGAS TOWER	GND CON	CLNC DEL	CPDLC
<b>132.4</b>	<b>125.025 379.15</b> (West) <b>119.775 282.2</b> (East)	<b>118.75 257.8</b> (Rwy 1L/19R, 1R/19L) <b>119.9 257.8</b> (Rwy 8L/26R, 8R/26L)	<b>121.1 270.8</b> E of 1R/19L <b>121.9 254.3</b> W of 1L/19R	<b>118.0</b>	



SW-4, 20 MAR 2025 to 17 APR 2025

SW-4, 20 MAR 2025 to 17 APR 2025

ELEV 2181	<b>D</b> TDZE 2157
-----------	--------------------



CATEGORY	A	B	C	D
RNP 0.10 DA		2544-1 $\frac{1}{8}$	387 (400-1 $\frac{1}{8}$ )	
RNP 0.30 DA		2613-1 $\frac{3}{8}$	456 (500-1 $\frac{3}{8}$ )	

**AUTHORIZATION REQUIRED**

MIRL Rwy 1R-19L  
REIL Rwsy 1R, 8R, 19L and 19R  
HIRL Rwsy 1L-19R, 8L-26R and 8R-26L