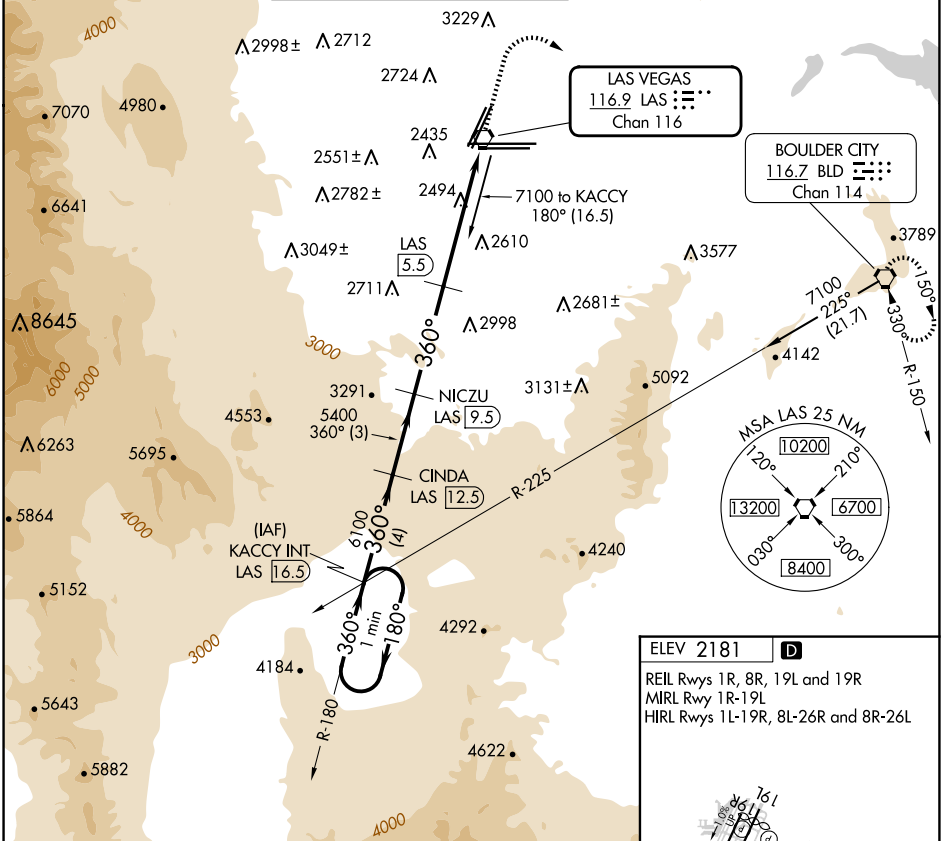


VORTAC LAS <b>116.9</b> Chan 116	APP CRS <b>360°</b>	Rwy Idg TDZE Apt Elev	<b>N/A</b> <b>N/A</b> <b>2181</b>
--	------------------------	-----------------------------	---

**VOR/DME-A**  
HARRY REID INTL (LAS)

D-ATIS <b>132.4</b>	LAS VEGAS APP CON <b>125.025 379.15</b> (West) <b>119.775 282.2</b> (East)	LAS VEGAS TOWER <b>118.75 257.8</b> (Rwy 1L/19R, 1R/19L) <b>119.9 257.8</b> (Rwy 8L/26R, 8R/26L)	GND CON <b>121.1 270.8</b> E of 1R/19L <b>121.9 254.3</b> W of 1L/19R	CLNC DEL <b>118.0</b>	CPDLC
	<p><b>MISSED APPROACH:</b> Climb to 5000 then climbing right turn to 6000 direct BLD VORTAC and hold.</p>				



SW-4, 20 MAR 2025 to 17 APR 2025

SW-4, 20 MAR 2025 to 17 APR 2025

**ELEV 2181** **D**

REIL Rwys 1R, 8R, 19L and 19R  
MIRL Rwy 1R-19L  
HIRL Rwys 1L-19R, 8L-26R and 8R-26L

CATEGORY	A	B	C	D
	3080-1¼	899 (900-1¼)	3280-3 1099 (1100-3)	3540-3 1359 (1400-3)