

HI-ILS Y or LOC Y RWY 13

LOC/DME I-PVO 109.1 Chan 28	APCH CRS 128°	Rwy Idg 10,000 TDZE 75 Arprt Elev 75
---	-------------------------	---

[USAF]

ATLANTIC CITY INTL (KACY)

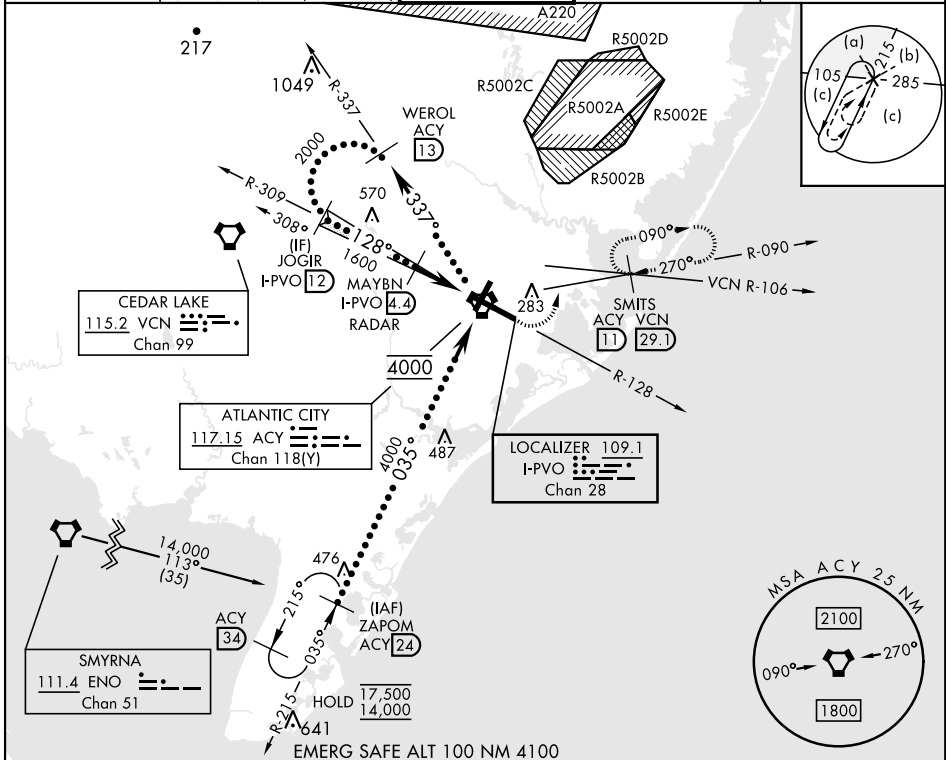
DME or RADAR required



MISSED APPROACH: Climb to 600 then climbing left turn to 2000 on ACY R-090 to SMITS/ACY 11 DME and hold.

▼* When ALS inop, increase RVR to 40 and vis to 3/4 mile.
** When ALS inop, increase vis to 1/8 miles.

ATIS 125.725 316.15	APP CON 124.6 327.125 (130° - 309°) 134.25 292.2 (310° - 129°)	TOWER 120.3 239.0	GND CON 121.9 284.6	CLNC DEL 127.85 353.775
-------------------------------	--	-----------------------------	-------------------------------	-----------------------------------



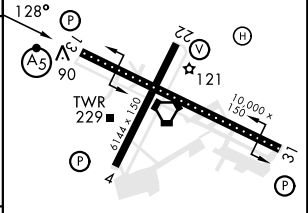
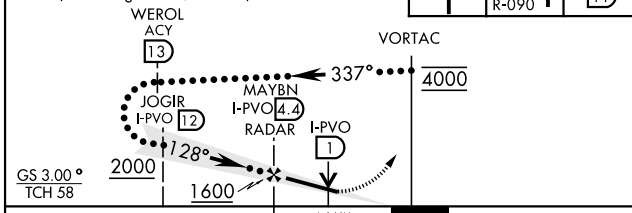
NE-2, 20 MAR 2025 to 17 APR 2025

NE-2, 20 MAR 2025 to 17 APR 2025

Use I-PVO DME when on the LOC course.
VGSI and ILS glidepath not coincident (VGSI Angle 3.00/TCH 71).



ELEV	75	TDZE	75
------	----	------	----



CATEGORY	C	D	E
S-ILS 13 *	275/18	200 (200-1/2)	
S-LOC 13 **	520/45	445 (500-7/8)	
CIRCLING	620-1 1/2 545 (600-1 1/2)	640-2 565 (600-2)	760-2 1/2 685 (700-2 1/2)

REIL Rwy 31				
HIRL Rwy 4-22 and 13-31				
TDZL/CL Rwy 13				
FAF to MAP 4.6 NM				
Knots	120	140	160	180
Min:Sec	2:18	1:58	1:43	1:32

HI-ILS Y or LOC Y RWY 13