

APP CRS	Rwy ldg	10001
308°	TDZE	63
	Apt Elev	75

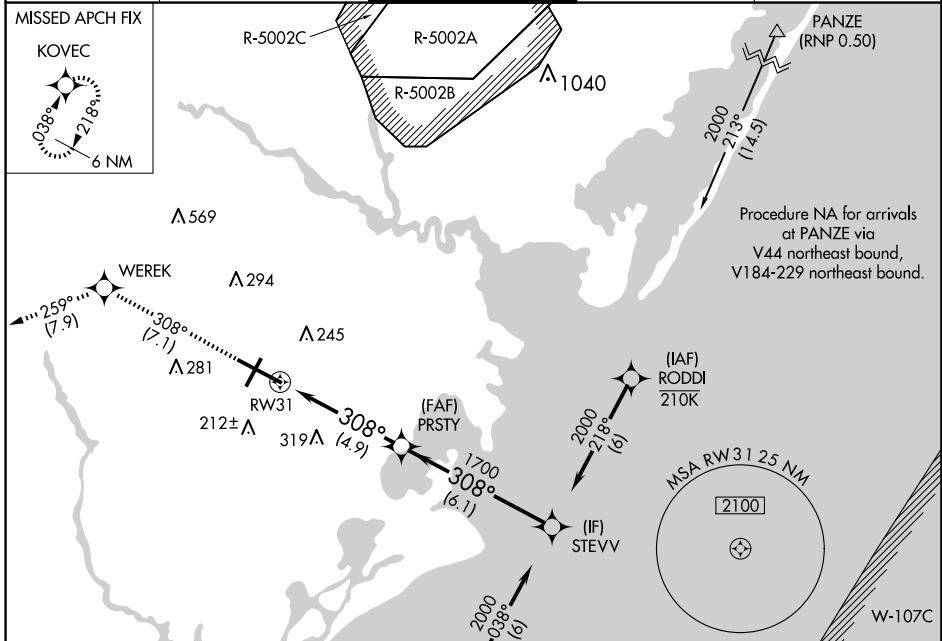
RNAV (RNP) Z RWY 31

ATLANTIC CITY INTL (ACY)

GPS Required. Procedure NA at night.
 For uncompensated Baro-VNAV systems, procedure NA below -13°C (8°F) or above 54°C (130°F).

MISSED APPROACH: Climb to 2000 on track 308° to WEREK on track 259° to KOVEC and hold.

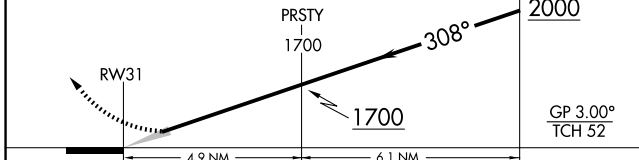
ATIS 125.725 316.15	ATLANTIC CITY APP CON 124.6 327.125	ATLANTIC CITY TOWER 120.3 239.0	GND CON 121.9 284.6	CLNC DEL 127.85 353.775
-------------------------------	---	---	-------------------------------	-----------------------------------



Procedure NA for arrivals on SIE VORTAC airway radials 333 CW 131.

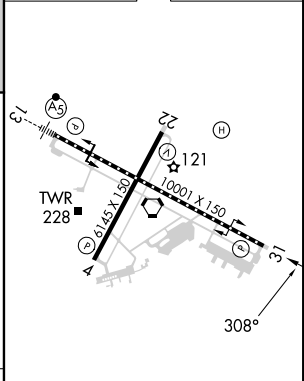
2000	↑	tr 308°	WEREK	tr 259°	KOVEC	Procedure Turn NA
------	---	---------	-------	---------	-------	-------------------

VGSI and RNAV glidepath not coincident (VGSI Angle 3.00/TCH 69).



CATEGORY	A	B	C	D
RNP 0.30 DA		408/60	345 (400-1¼)	

ELEV 75	D	TDZE 63
---------	----------	---------



TDZ/CL Rwy 13
 HIRL Rlys 4-22 and 13-31
 REIL Rwy 31

NE-2, 20 MAR 2025 to 17 APR 2025

NE-2, 20 MAR 2025 to 17 APR 2025

AUTHORIZATION REQUIRED