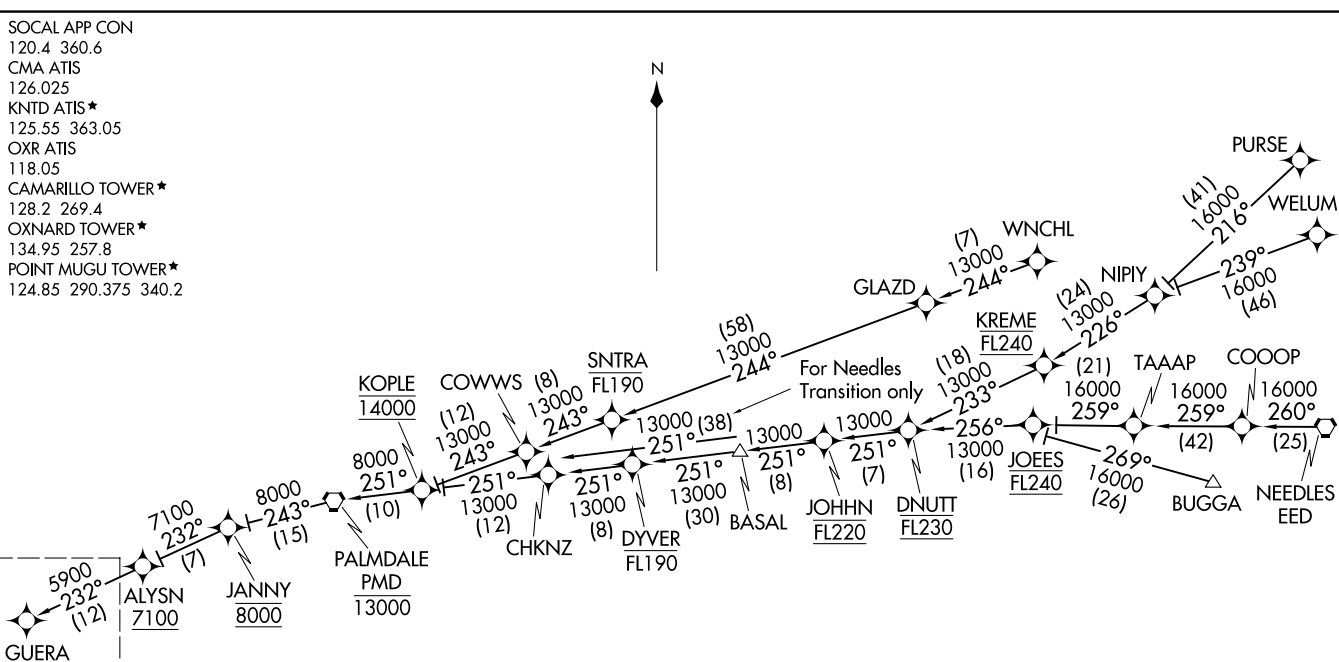


(GUERA.GUERA2) 19JUL18

GUERA TWO ARRIVAL (RNAV) Transition Routes

OXNARD, CALIFORNIA

SOCAL APP CON
120.4 360.6
CMA ATIS
126.025
KNTD ATIS*
125.55 363.05
OXR ATIS
118.05
CAMARILLO TOWER*
128.2 269.4
OXNARD TOWER*
134.95 257.8
POINT MUGU TOWER*
124.85 290.375 340.2



(GUERA.GUERA2) 20198

GUERA TWO ARRIVAL (RNAV) Transition Routes

OXNARD, CALIFORNIA

AL-674 (FAA)

See following page for Arrival Routes.

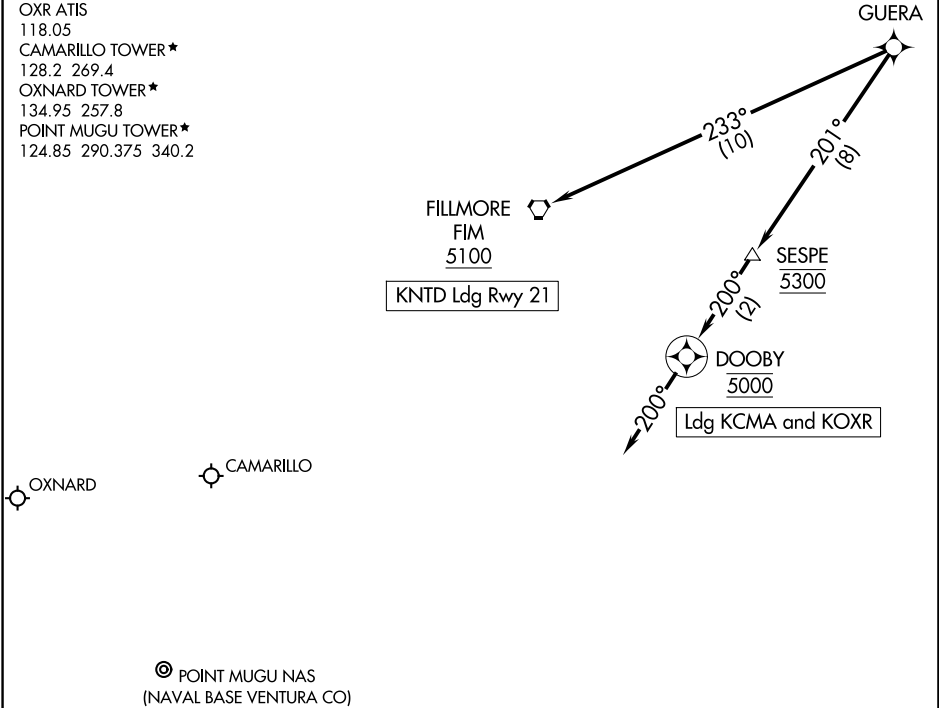
- NOTE: RADAR required.
- NOTE: RNAV 1.
- NOTE: DME/DME/IRU or GPS required.
- NOTE: Turbojet and turboprop aircraft only.
- NOTE: KREME TRANSITION restricted to KLAS departures only.
- NOTE: WANCHL TRANSITION ATC assigned only.

- BUGGA TRANSITION (BUGGA.GUERA2)
- KREME TRANSITION (KREME.GUERA2)
- NEEDLES TRANSITION (EED.GUERA2)
- PURSE TRANSITION (PURSE.GUERA2)
- WELUM TRANSITION (WELUM.GUERA2)
- WANCHL TRANSITION (WANCHL.GUERA2)

NOTE: Chart not to scale.

(CONTINUED ON FOLLOWING PAGE)

SOCAL APP CON
 120.4 360.6
 CMA ATIS
 126.025
 KNND ATIS ★
 125.55 363.05
 OXR ATIS
 118.05
 CAMARILLO TOWER ★
 128.2 269.4
 OXNARD TOWER ★
 134.95 257.8
 POINT MUGU TOWER ★
 124.85 290.375 340.2



SW-3, 20 MAR 2025 to 17 APR 2025

SW-3, 20 MAR 2025 to 17 APR 2025

- NOTE: RADAR required.
- NOTE: RNAV 1.
- NOTE: DME/DME/IRU or GPS required.
- NOTE: Turbojet and turboprop aircraft only.

NOTE: Chart not to scale.

ARRIVAL ROUTE DESCRIPTION

LANDING KNTD RWY 21: From GUERA on track 233° to FIM VORTAC at or above 5100. Expect ILS Y or LOC/DME RWY 21 approach.

LANDING KOXR/KCMA: From GUERA on track 201° to cross SESPE at 5300, then on track 200° to cross DOOBY at 5000, then on track 200°. Expect RADAR vectors to final approach course.