

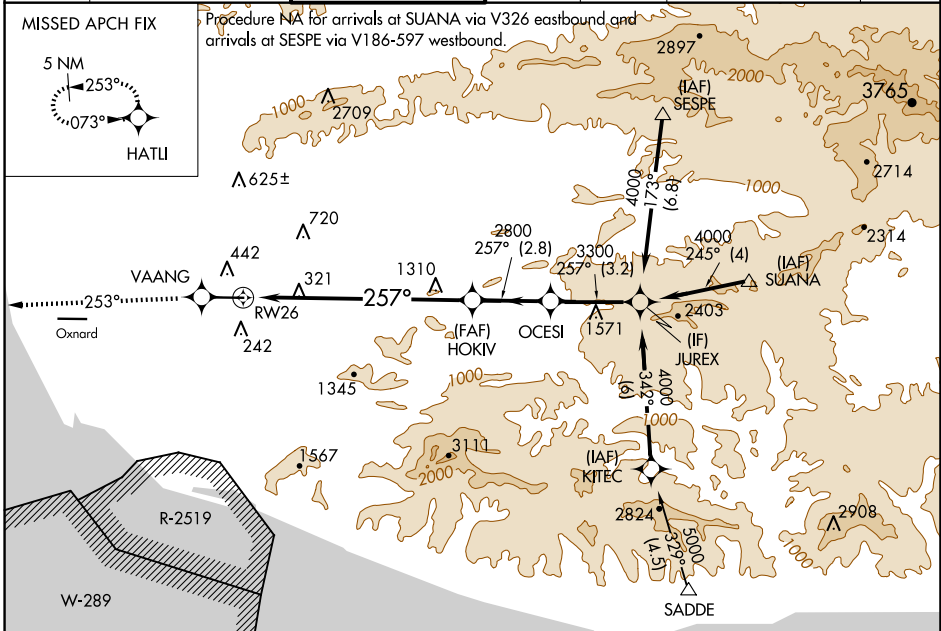
WAAS CH <b>58202</b> W <b>26A</b>	APP CRS <b>257°</b>	Rwy Idg TDZE Apt Elev	<b>6013</b> <b>77</b> <b>77</b>
---	------------------------	-----------------------------	---------------------------------------

# RNAV (GPS) Z RWY 26

CAMARILLO (CMA)

<b>V</b> DME/DME RNP -0.3 NA. If local altimeter setting not received, use Oxnard altimeter setting and increase DA 18 feet.	MISSED APPROACH: Climb to 3000 direct VAANG and via 253° track to HATLI and hold.
---	---

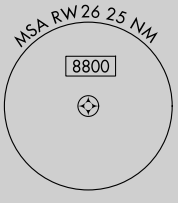
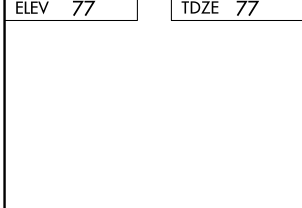
ATIS <b>126.025</b>	POINT MUGU APP CON * <b>124.7 335.5</b>	CAMARILLO TOWER * <b>128.2 (CTAF) 0 269.4</b>	GND CON <b>121.8</b>	CLNC DEL <b>121.8</b>	POINT MUGU CLNC DEL <b>120.75 279.55</b>	UNICOM <b>122.95</b>
------------------------	--	--	-------------------------	--------------------------	---	-------------------------



SW-3, 20 MAR 2025 to 17 APR 2025

SW-3, 20 MAR 2025 to 17 APR 2025

ELEV 77	TDZE 77
---------	---------



3000	VAANG	253° tr	HATLI	JUREX	Procedure Turn NA
↑	◆	◆	◆	◆	
	HOKIV	OCESI	JUREX		
	2800	3300	4000		
	8.2 NM	2.8 NM	3.2 NM		
CATEGORY	A	B	C	D	
LPV DA		327-3/4	250 (300-3/4)		