

WAAS CH <b>86443</b> W <b>16A</b>	APP CRS <b>166°</b>	Rwy Idg TDZE <b>505</b> Apt Elev <b>505</b>	<b>6997</b>
---	------------------------	---	-------------

# RNAV (GPS) RWY 16

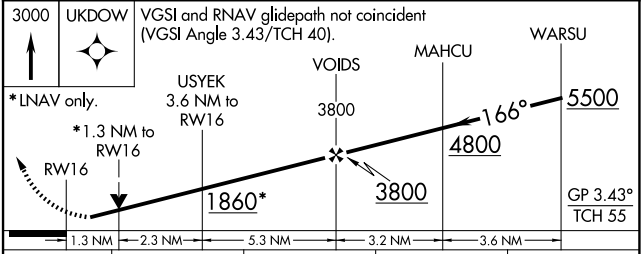
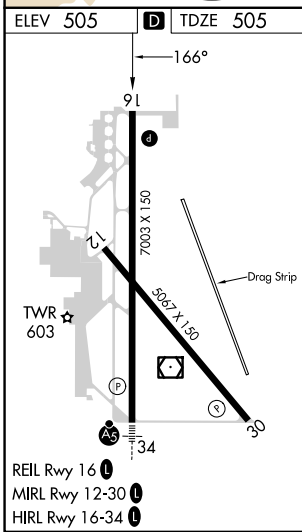
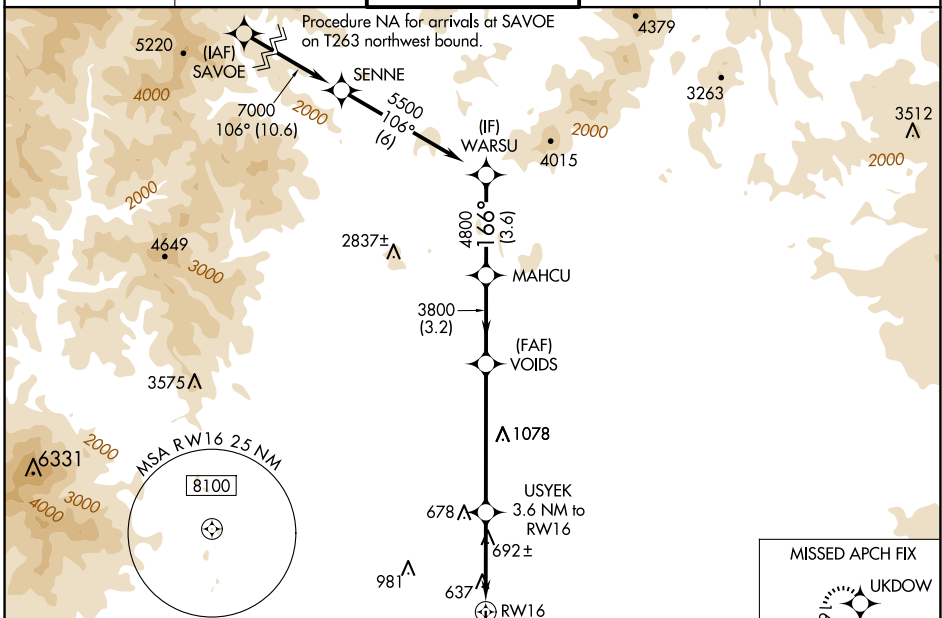
REDDING RGNL (RDD)

RNP APCH.

Rwy 16 helicopter visibility reduction below 3/4 SM NA.  
 For uncompensated Baro-VNAV systems, LNAV/VNAV NA below -4°C or above 53°C.

MISSED APPROACH: Climb to 3000 direct UKDOW and hold.

ATIS <b>124.1</b>	OAKLAND CENTER <b>132.2 350.3</b>	REDDING TOWER * <b>119.8 (CTAF) 0 269.25</b>	GND CON <b>121.7</b>	UNICOM <b>122.95</b>
----------------------	--------------------------------------	---	-------------------------	-------------------------



CATEGORY	A	B	C	D
LPV DA	755-3/4	250 (300-3/4)	775-7/8	270 (300-7/8)
RNAV/VNAV DA	892-1 1/8		387 (400-1 1/8)	
RNAV MDA	960-1	455 (500-1)	960-1 3/8	455 (500-1 1/8)
CIRCLING	960-1	1000-1	1120-1 3/4	1340-2 3/4
	455 (500-1)	495 (500-1)	615 (700-1 3/4)	835 (900-2 3/4)