

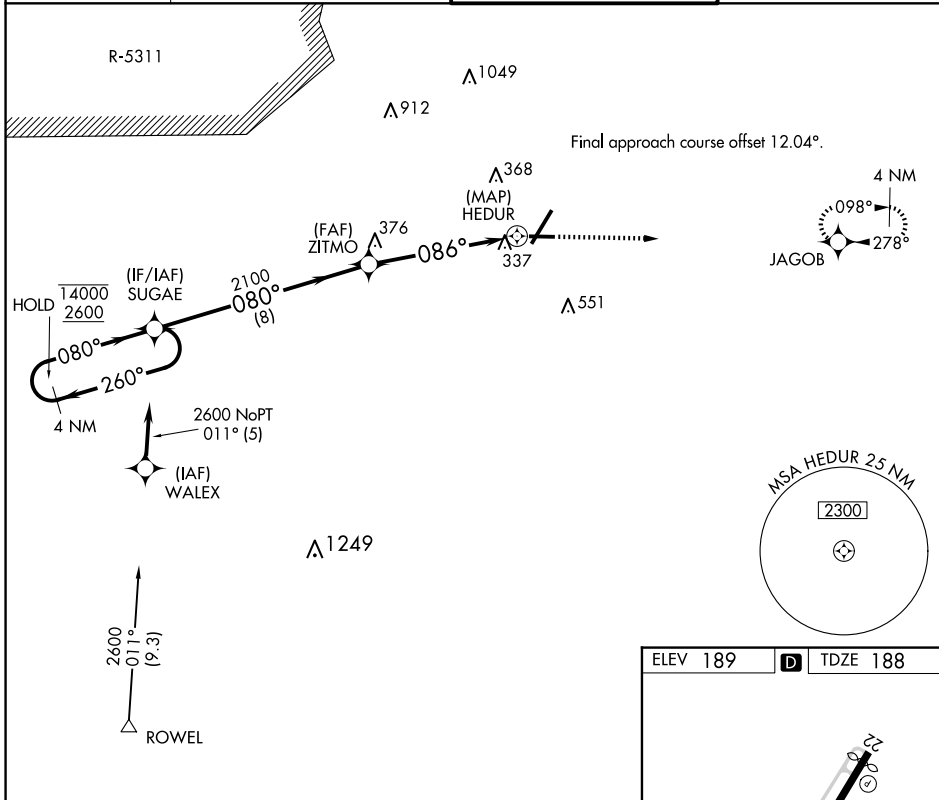
APP CRS	Rwy Idg	4801
086°	TDZE	188
	Apt Elev	189

RNAV (GPS) RWY 10

FAYETTEVILLE RGNL/GRANNIS FLD (FAY)

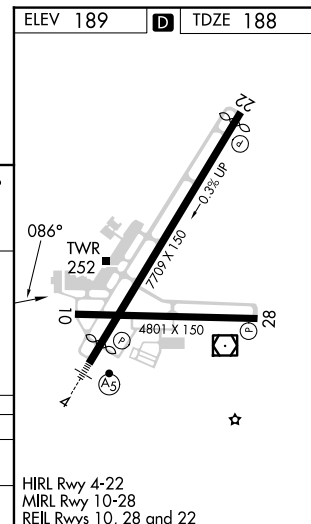
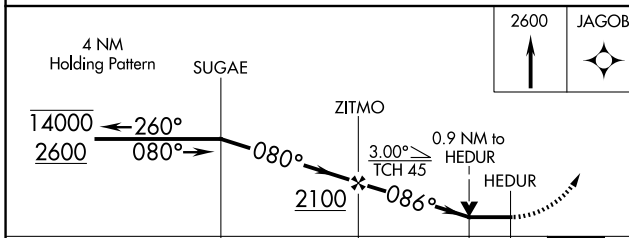
RNP APCH - GPS.	MISSED APPROACH: Climb to 2600 direct JAGOB and hold.
▼ Rwy 10 helicopter visibility reduction below 3/4 SM NA.	

ATIS 121.25	FAYETTEVILLE APP CON 133.0 290.25	FAYETTEVILLE TOWER 118.3 269.2	GND CON 121.7 348.6
-----------------------	---	--	-------------------------------



SE-2, 20 MAR 2025 to 17 APR 2025

SE-2, 20 MAR 2025 to 17 APR 2025



CATEGORY	A	B	C	D
LNVA MDA	660-1	472 (500-1)	660-1 3/8	472 (500-1 3/8)
CIRCLING	660-1	471 (500-1)	860-2 671 (700-2)	860-2 1/4 671 (700-2 1/4)

HIRL Rwy 4-22
MIRL Rwy 10-28
REIL Rws 10, 28 and 22