

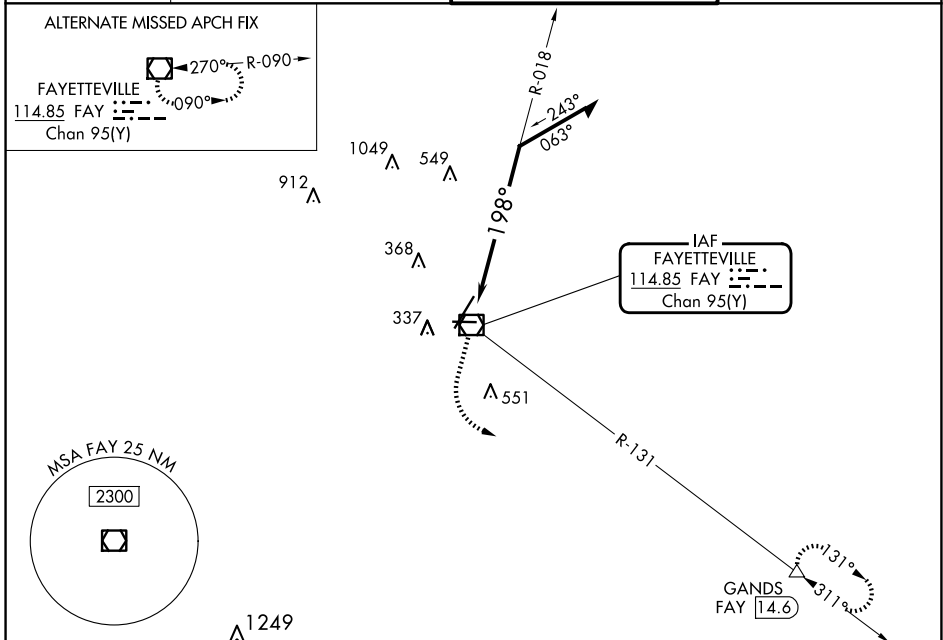
VOR/DME FAY 114.85 Chan 95(Y)	APP CRS 198°	Rwy Idg 6413 TDZE 180 Apt Elev 189
--	------------------------	---

VOR RWY 22

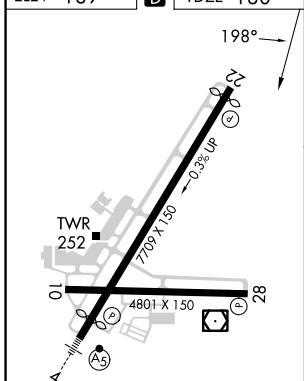
FAYETTEVILLE RGNL/GRANNIS FLD (FAY)

DME required.		MISSED APPROACH: Climb to 1300 then climbing left turn to 3000 on heading 100° and on FAY VOR/DME R-131 to GANDS/FAY 14.6 DME and hold.	
---------------	--	---	--

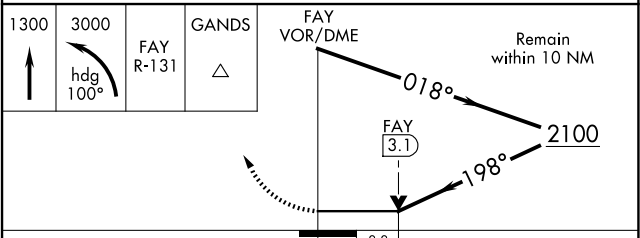
ATIS 121.25	FAYETTEVILLE APP CON 133.0 290.25	FAYETTEVILLE TOWER 118.3 269.2	GND CON 121.7 348.6
-----------------------	---	--	-------------------------------



ELEV 189	D	TDZE 180
----------	----------	----------



HIRL Rwy 4-22	MIRL Rwy 10-28	REIL Rwy 10, 28 and 22
---------------	----------------	------------------------



CATEGORY	A	B	C	D
S-22	900-1 720 (800-1)		900-2 720 (800-2)	
C CIRCLING	900-1 711 (800-1)		900-2 711 (800-2)	900-2 1/4 711 (800-2 1/4)

SE-2, 20 MAR 2025 to 17 APR 2025

SE-2, 20 MAR 2025 to 17 APR 2025