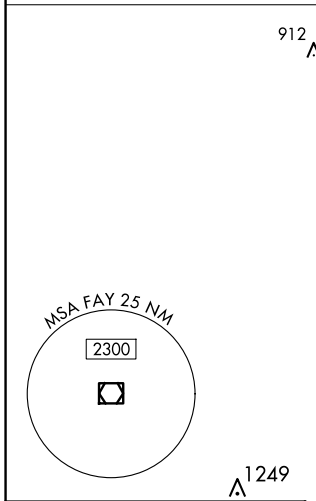
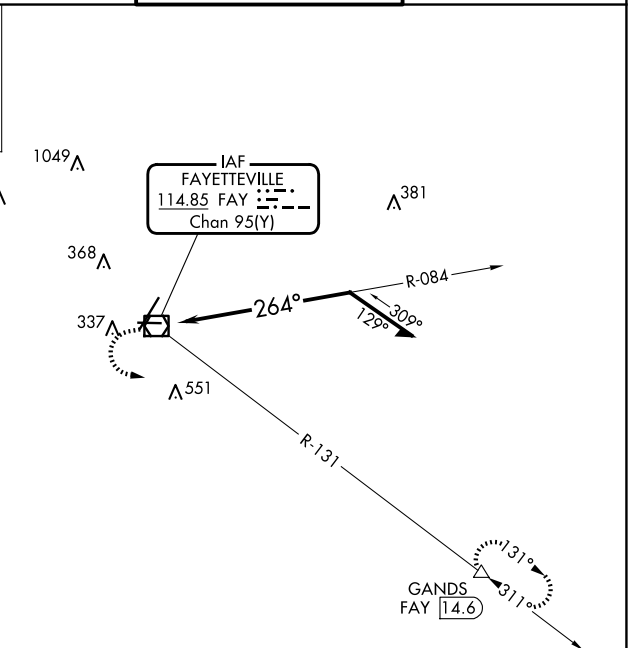
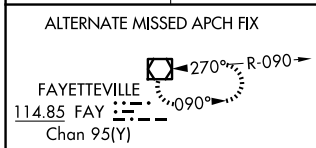


VOR/DME <b>FAY</b> <b>114.85</b> Chan <b>95(Y)</b>	APP CRS <b>264°</b>	Rwy Idg <b>4801</b> TDZE <b>188</b> Apt Elev <b>189</b>
--	------------------------	---

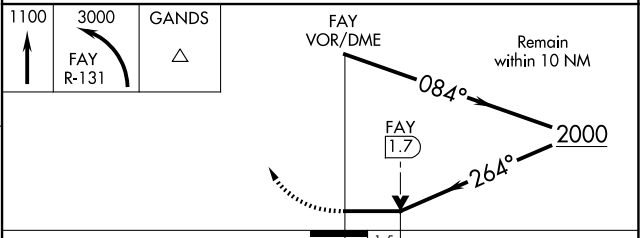
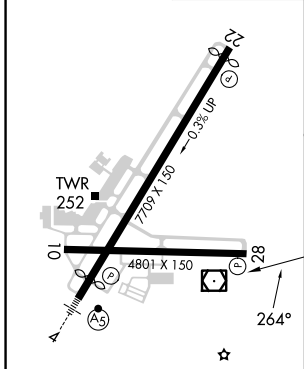
# VOR RWY 28

FAYETTEVILLE RGNL/GRANNIS FLD (FAY)

DME required.		MISSED APPROACH: Climb to 1100 then climbing left turn to 3000 on FAY VOR/DME R-131 to GANDS/FAY 14.6 DME and hold.	
ATIS <b>121.25</b>	FAYETTEVILLE APP CON <b>133.0 290.25</b>	FAYETTEVILLE TOWER <b>118.3 269.2</b>	GND CON <b>121.7 348.6</b>



ELEV 189	<b>D</b>	TDZE 188
----------	----------	----------



CATEGORY	A	B	C	D
S-28	700-1	512 (600-1)	700-1 $\frac{3}{8}$	512 (600-1 $\frac{3}{8}$ )
<b>C</b> CIRCLING	700-1	511 (600-1)	860-2 671 (700-2)	860-2 $\frac{1}{4}$ 671 (700-2 $\frac{1}{4}$ )

HIRL Rwy 4-22  
MIRL Rwy 10-28  
REIL Rwy 10, 22 and 28

FAYETTEVILLE, NORTH CAROLINA  
Amdt 9 14JUL22

FAYETTEVILLE RGNL/GRANNIS FLD (FAY)  
34°59'N-78°53'W

# VOR RWY 28

SE-2, 20 MAR 2025 to 17 APR 2025

SE-2, 20 MAR 2025 to 17 APR 2025