

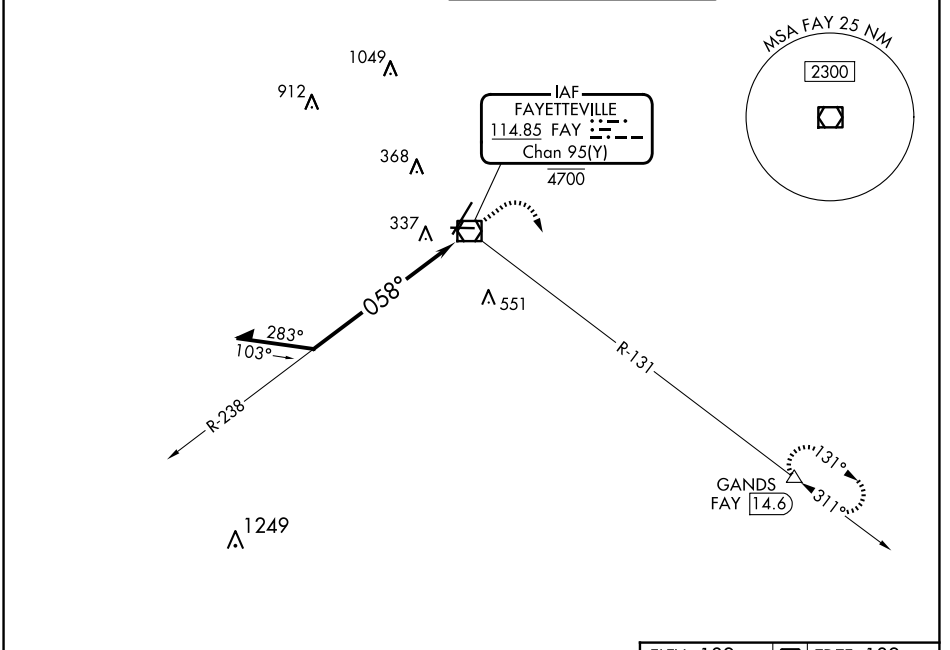
VOR/DME	FAY	Rwy Idg	<b>6508</b>
<b>114.85</b>	APP CRS	TDZE	<b>189</b>
Chan <b>95(Y)</b>	<b>058°</b>	Apt Elev	<b>189</b>

# VOR RWY 4

FAYETTEVILLE RGNL/GRANNIS FLD (FAY)

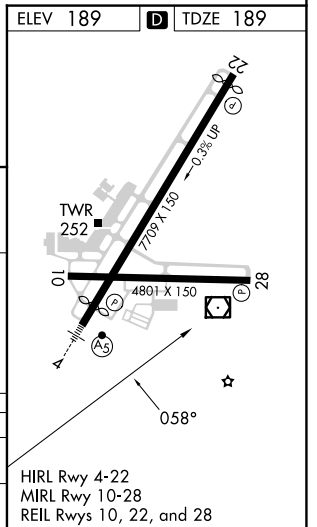
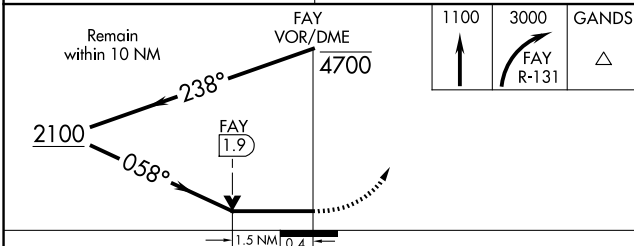
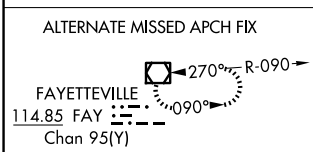
DME required.	MALSR	MISSED APPROACH: Climb to 1100 then climbing right turn to 3000 on FAY VOR/DME R-131 to GANDS/FAY 14.6 DME and hold.
▼ Rwy 4 helicopter visibility reduction below RVR 4000 NA. ▲ For inop ALS, increase S-4 Cats A/B visibility to RVR 5500.		

ATIS <b>121.25</b>	FAYETTEVILLE APP CON <b>133.0 290.25</b>	FAYETTEVILLE TOWER <b>118.3 269.2</b>	GND CON <b>121.7 348.6</b>
-----------------------	---	--	-------------------------------



SE-2, 20 MAR 2025 to 17 APR 2025

SE-2, 20 MAR 2025 to 17 APR 2025



CATEGORY	A	B	C	D
S-4	720/40	531 (600-¾)	720/55	531 (600-1)
CIRCLING	720-1	531 (600-1)	860-2 671 (700-2)	860-2¼ 671 (700-2¼)

HIRL Rwy 4-22  
MIRL Rwy 10-28  
REIL Rws 10, 22, and 28