

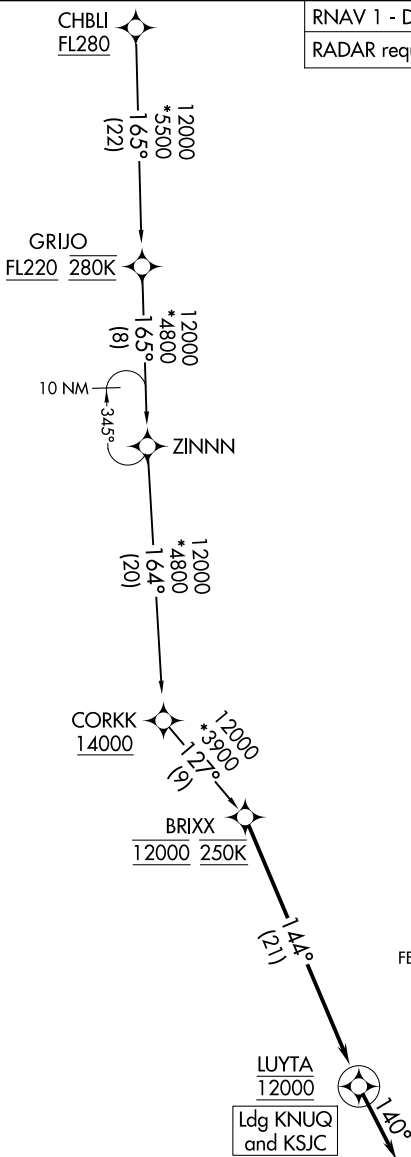
# BRXX FOUR ARRIVAL (RNAV)

AL-693 (FAA)

SAN JOSE, CALIFORNIA

OAKLAND CENTER  
 125.85 323.0  
 NORCAL APP CON  
 133.95 317.6  
 NUQ ATIS  
 124.175 283.0  
 SJC D-ATIS  
 126.95  
 NUQ GND CON  
 121.85 278.95  
 SJC GND CON  
 121.7  
 MOFFETT TOWER\*  
 119.55 259.65  
 SAN JOSE TOWER\*  
 124.0 257.6

RNAV 1 - DME/DME/IRU or GPS.  
 RADAR required.



NOTE: Chart not to scale.

## ARRIVAL ROUTE DESCRIPTION

CHBLI TRANSITION (CHBLI.BRXX4)

LANDING KSJC/KNUQ: From BRIXX on track 144° to cross LUYTA at 12000, then on track 140°. Expect RADAR vectors to final approach course.

# BRXX FOUR ARRIVAL (RNAV)

SAN JOSE, CALIFORNIA