

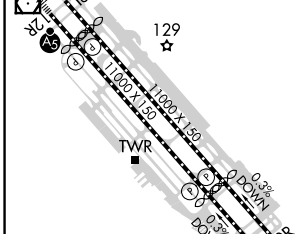
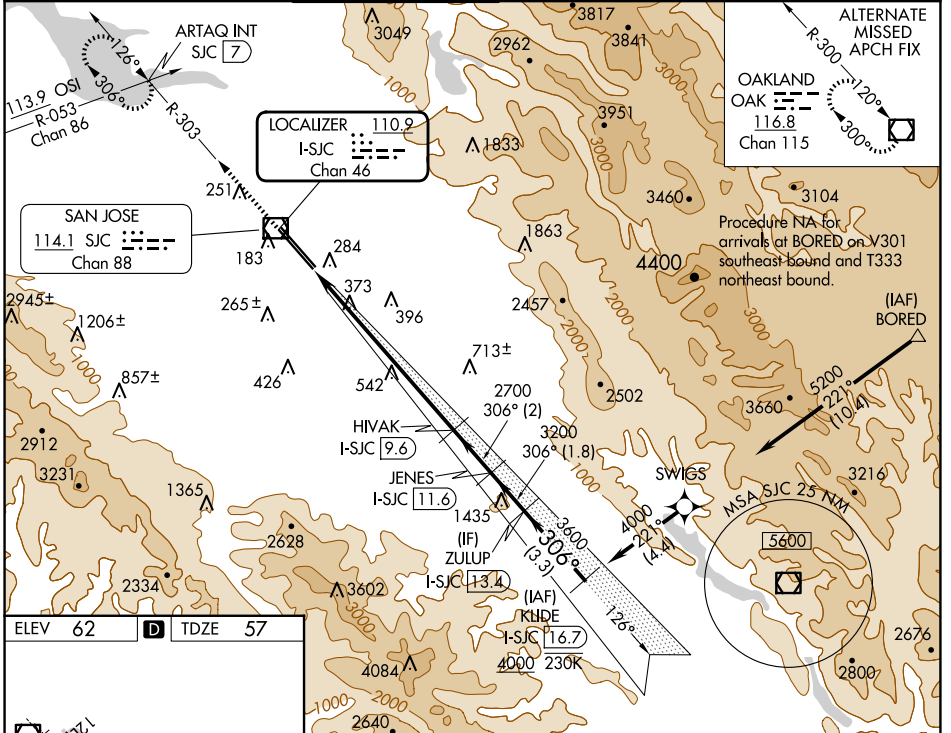
LOC/DME I-SJC 110.9 Chan 46	APP CRS 306°	Rwy Idg 7614 TDZE 57 Apt Elev 62
--	------------------------	---

ILS RWY 30L (SA CAT I & II)

NORMAN Y MINETA SAN JOSE INTL (SJC)

RNAV 1-GPS or RADAR required for procedure entry. DME required. From BORED: RNAV 1-GPS required.		MALSR	MISSED APPROACH: Climb to 1900 on SJC VOR/DME R-303 to ARTAQ INT/SJC 7 DME and hold.
<p>▼ SA CAT I: Requires specific OPSPEC, MSPEC, or LOA approval and use of HUD to DH.</p> <p>▲ SA CAT II: Reduced lighting: requires specific OPSPEC, MSPEC, or LOA approval and use of autoland or HUD to touchdown. SA CAT I/II: Procedure NA when tower closed.</p>			

D-ATIS 126.95	NORCAL APP CON 120.1 290.25	SAN JOSE TOWER* 124.0 (CTAF) 257.6	GND CON 121.7	CLNC DEL 118.0	CPDLC	UNICOM 122.95
-------------------------	---------------------------------------	---	-------------------------	--------------------------	-------	-------------------------



1900	ARTAQ INT	VGSI and ILS glidepath not coincident (VGSI Angle 3.00/TCH 70).	ZULUP I-SJC 13.4	KLIDE I-SJC 16.7
SJC R-303			HIVAK I-SJC 9.6	JENES I-SJC 11.6
			2700	3200
			2700	3600
			2700	4000
			8.1 NM	2 NM
			1.8 NM	3.3 NM

CATEGORY	A	B	C	D
S-ILS 30L		SA CAT I RA 147/14	150 DA 207	
S-ILS 30L		SA CAT II RA 97/12	100 DA 157	

SA CATEGORY I & II ILS - SPECIAL AIRCREW AND AIRCRAFT CERTIFICATION REQUIRED

SW-2, 20 MAR 2025 to 17 APR 2025

SW-2, 20 MAR 2025 to 17 APR 2025