

LOC/DME I-SJC <b>110.9</b> Chan <b>46</b>	APP CRS <b>306°</b>	Rwy ldg <b>7614</b>	30L <b>7597</b>	30R <b>57</b>	30R <b>55</b>
		TDZE <b>62</b>		<b>62</b>	<b>62</b>
		Apt Elev			

# ILS or LOC RWY 30L

NORMAN Y MINETA SAN JOSE INTL (SJC)

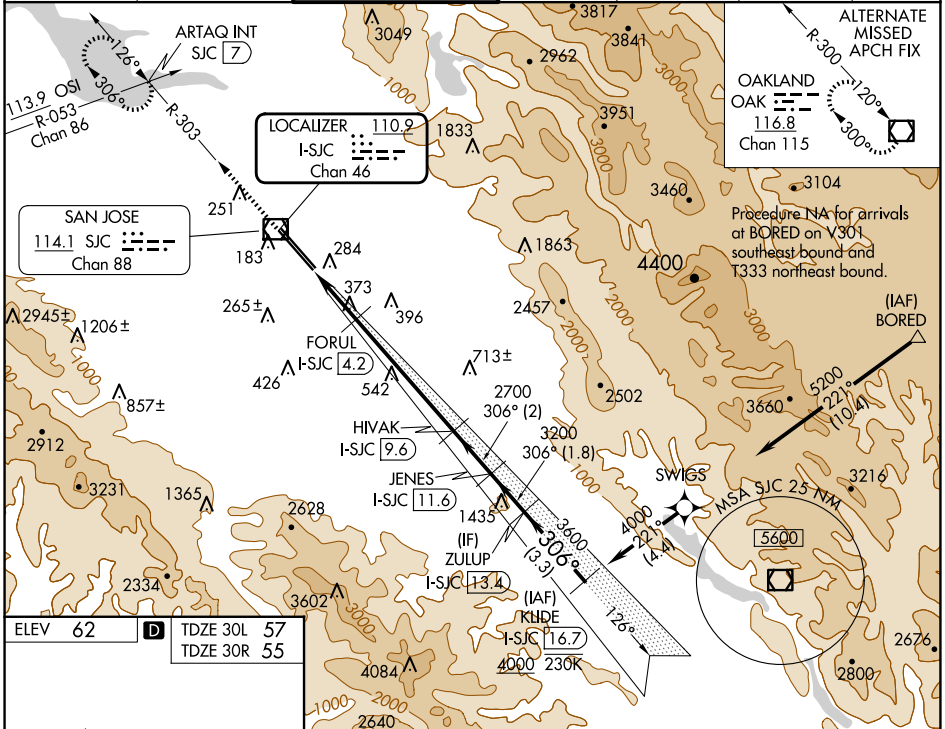
RNAV 1-GPS or RADAR required for procedure entry. DME required.  
From BORED: RNAV 1-GPS required.

MALSR  
Rwy 30L

MISSED APPROACH: Climb to 1900 on SJC  
VOR/DME R-303 to ARTAQ INT/SJC 7 DME  
and hold.

# RVR 1800 authorized with use of FD or AP or HUD to DA.

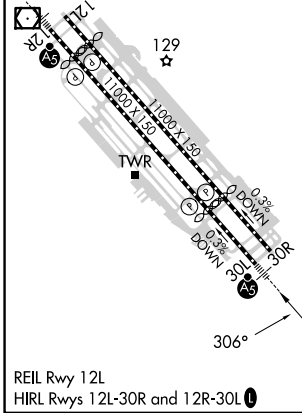
D-ATIS <b>126.95</b>	NORCAL APP CON <b>120.1 290.25</b>	SAN JOSE TOWER * <b>124.0 (CTAF) 257.6</b>	GND CON <b>121.7</b>	CLNC DEL <b>118.0</b>	CPDLC	UNICOM <b>122.95</b>
-------------------------	---------------------------------------	---	-------------------------	--------------------------	-------	-------------------------



SW-2, 20 MAR 2025 to 17 APR 2025

SW-2, 20 MAR 2025 to 17 APR 2025

ELEV 62	TDZE 30L 57	TDZE 30R 55
---------	-------------	-------------



1900	ARTAQ INT	VGS1 and ILS glidepath not coincident (VGS1 Angle 3.00/TCH 70).		KLIDE I-SJC 16.7
SJC R-303	FORUL I-SJC 4.2	HIVAK I-SJC 9.6	JENES I-SJC 11.6	ZULUP I-SJC 13.4
*LOC only	*I-SJC 3	2700	3200	3600
I-SJC 1.4				4000
1.6 NM	1.2 NM	5.3 NM	2 NM	1.8 NM
				3.3 NM
				GS 3.00° TCH 54

CATEGORY	A	B	C	D
S-ILS 30L #	257/24 200 (200-1/2)			
S-LOC 30L	640/24	583 (600-1/2)	640-1 1/4	583 (600-1 1/4)
SIDESTEP 30R	640-1	585 (600-1)	640-1 3/4	585 (600-1 3/4)
			585 (600-2)	