

RNAV 1 - DME/DME/IRU or GPS

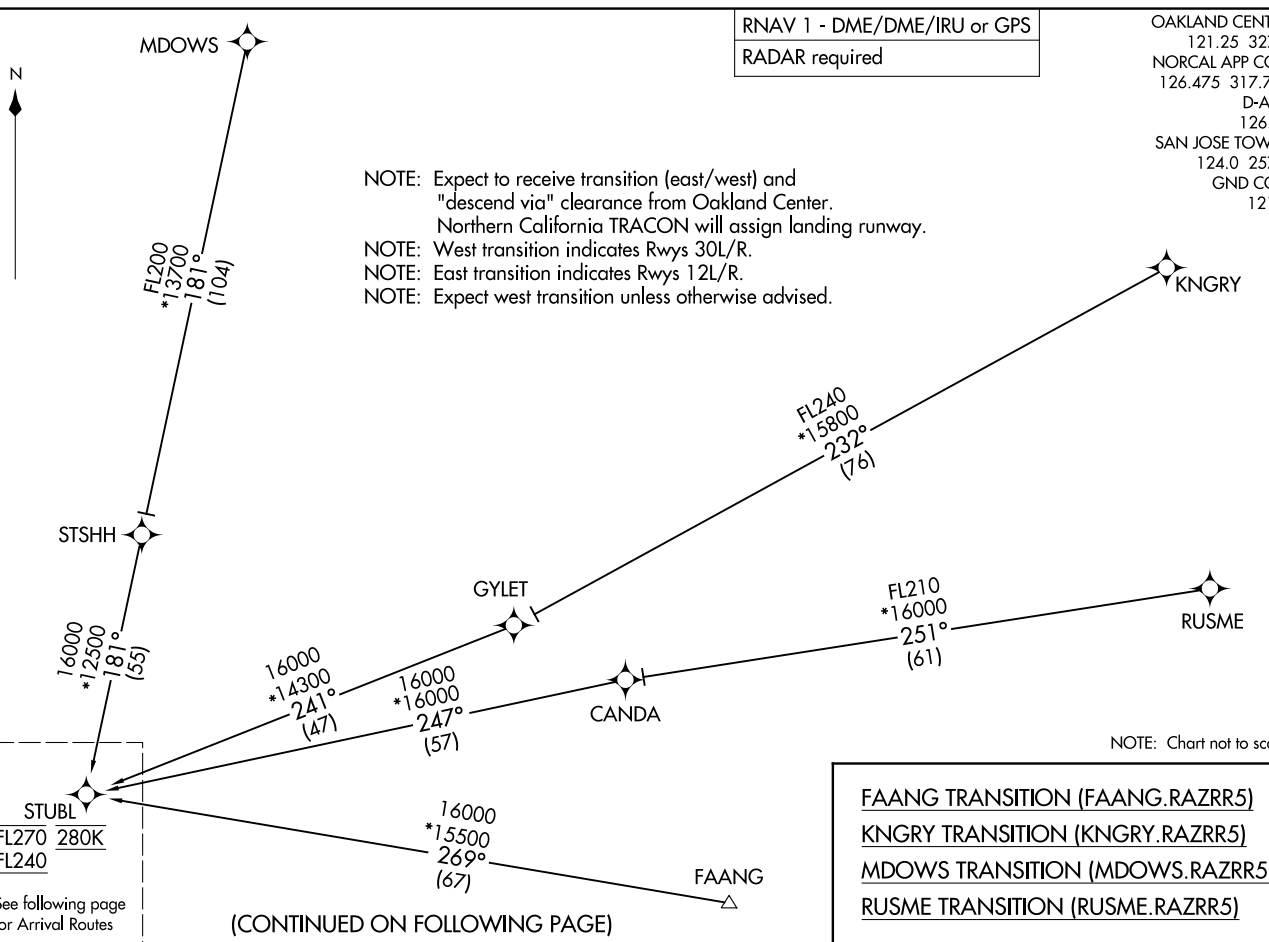
RADAR required

OAKLAND CENTER  
121.25 327.0  
NORCAL APP CON  
126.475 317.775  
D-ATIS  
126.95  
SAN JOSE TOWER\*  
124.0 257.6  
GND CON  
121.7

(STUBL.RAZRR5) 221.95  
RAZRR FIVE ARRIVAL (RNAV) Transition Routes

AL-693 (FAA) NORMAN Y MINETA SAN JOSE INTL (SJC)  
SAN JOSE, CALIFORNIA

NOTE: Expect to receive transition (east/west) and "descend via" clearance from Oakland Center. Northern California TRACON will assign landing runway.  
NOTE: West transition indicates Rwys 30L/R.  
NOTE: East transition indicates Rwys 12L/R.  
NOTE: Expect west transition unless otherwise advised.



STUBL  
FL270 280K  
FL240  
See following page for Arrival Routes

(CONTINUED ON FOLLOWING PAGE)

FAANG TRANSITION (FAANG.RAZRR5)  
KNGRY TRANSITION (KNGRY.RAZRR5)  
MDOWS TRANSITION (MDOWS.RAZRR5)  
RUSME TRANSITION (RUSME.RAZRR5)

RAZRR FIVE ARRIVAL (RNAV) Transition Routes  
(STUBL.RAZRR5) 140U22

SAN JOSE, CALIFORNIA  
NORMAN Y MINETA SAN JOSE INTL (SJC)

RAZRR FIVE ARRIVAL (RNAV) (STUBL, RAZRR5) 140U22  
 SAN JOSE, CALIFORNIA  
 NORMAN Y MINETA SAN JOSE INTL (SJC)

(STUBL, RAZRR5) 22195  
 RAZRR FIVE ARRIVAL (RNAV) Arrival Routes  
 AL-693 (FAA)  
 NORMAN Y MINETA SAN JOSE INTL (SJC)  
 SAN JOSE, CALIFORNIA

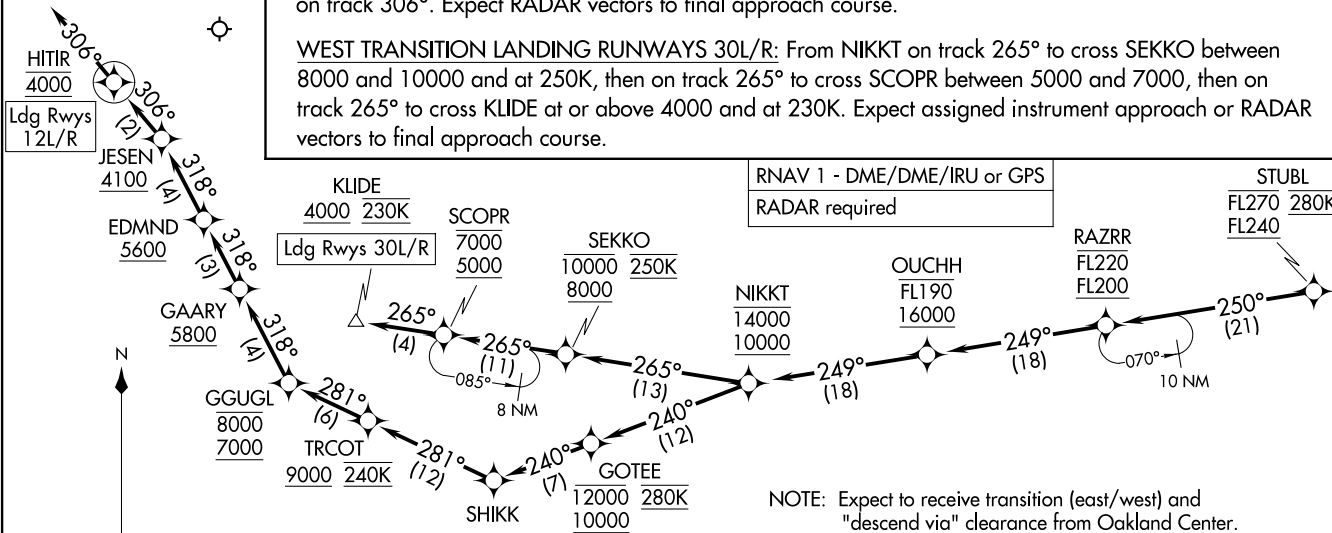
### ARRIVAL ROUTE DESCRIPTION

From STUBL on track 250° to cross RAZRR between FL200 and FL220, then on track 249° to cross OUCHH between 16000 and FL190, then on track 249° to cross NIKKT between 10000 and 14000.

EAST TRANSITION LANDING RUNWAYS 12L/R: From NIKKT on track 240° to cross GOTEE between 10000 and 12000 and at 280K, then on track 240° to SHIKK, then on track 281° to cross TRCOT at or above 9000 and at 240K, then on track 281° to cross GGUGL between 7000 and 8000, then on track 318° to cross GAARY at or above 5800, then on track 318° to cross EDMND at or above 5600, then on track 318° to cross JESEN at or above 4100, then on track 306° to cross HITIR at 4000. Expect RADAR vectors to final approach course.

WEST TRANSITION LANDING RUNWAYS 30L/R: From NIKKT on track 265° to cross SEKKO between 8000 and 10000 and at 250K, then on track 265° to cross SCOPR between 5000 and 7000, then on track 265° to cross KLIDE at or above 4000 and at 230K. Expect assigned instrument approach or RADAR vectors to final approach course.

OAKLAND CENTER  
 121.25 327.0  
 NORCAL APP CON  
 126.475 317.775  
 D-ATIS  
 126.95  
 SAN JOSE TOWER\*  
 124.0 257.6  
 GND CON  
 121.7



RNAV 1 - DME/DME/IRU or GPS  
 RADAR required

- NOTE: Expect to receive transition (east/west) and "descend via" clearance from Oakland Center. Northern California TRACON will assign landing runway.
- NOTE: West transition indicates Rwy's 30L/R.
- NOTE: East transition indicates Rwy's 12L/R.
- NOTE: Expect west transition unless otherwise advised.

NOTE: Chart not to scale.