

APP CRS 126°	Rwy ldg TDZE Apt Elev	8831 44 62
------------------------	-----------------------------	---------------------------------------

RNAV (RNP) Z RWY 12L

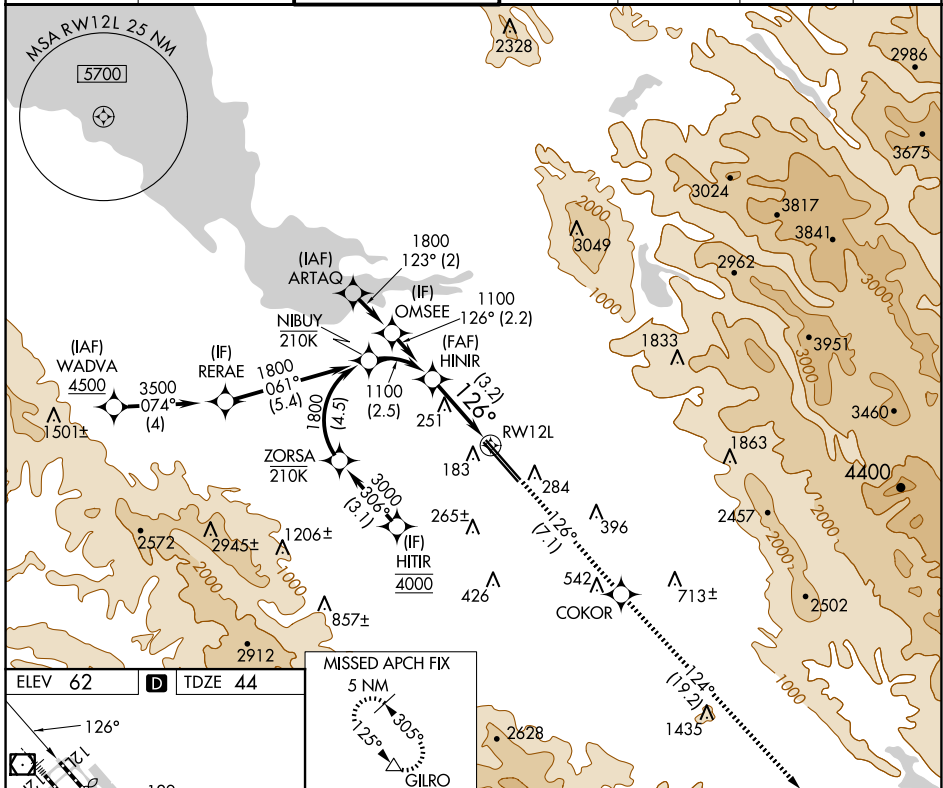
NORMAN Y MINETA SAN JOSE INTL (SJC)

RNP AR APCH-GPS.

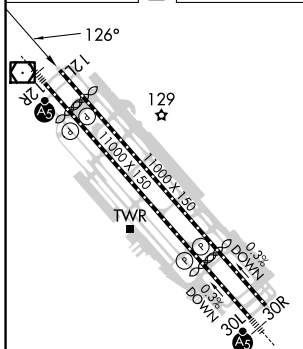
MISSED APPROACH: Climb to 4600 on track 126° to COKOR and track 124° to GILRO and hold.

For uncompensated Baro-VNAV systems, procedure NA below 0°C or above 54°C.

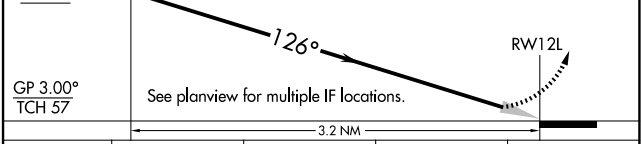
D-ATIS 126.95	NORCAL APP CON 120.1 290.25	SAN JOSE TOWER* 124.0 (CTAF) 0 257.6	GND CON 121.7	CLNC DEL 118.0	CPDLC	UNICOM 122.95
-------------------------	---------------------------------------	--	-------------------------	--------------------------	-------	-------------------------



ELEV 62	D	TDZE 44
---------	----------	---------



HINIR 1100	VGSI and RNAV glidepath not coincident (VGSI Angle 3.00/TCH 70).	4600 tr 126°	COKOR tr 124°	GILRO △
---------------	--	-----------------	------------------	------------



CATEGORY	A	B	C	D
RNP 0.18 DA		400-1	356 (400-1)	
RNP 0.30 DA		451-1 $\frac{1}{8}$	407 (400-1 $\frac{1}{8}$)	

REIL Rwy 12L
HIRL Rwys 12L-30R and 12R-30L

AUTHORIZATION REQUIRED

SW-2, 20 MAR 2025 to 17 APR 2025

SW-2, 20 MAR 2025 to 17 APR 2025