

WAAS CH <b>90106</b> <b>W12A</b>	APP CRS <b>126°</b>	Rwy ldg TDZE Apt Elev	12R <b>8587</b> <b>46</b> <b>62</b>	12L <b>8831</b> <b>44</b> <b>62</b>
--	------------------------	-----------------------------	--	--

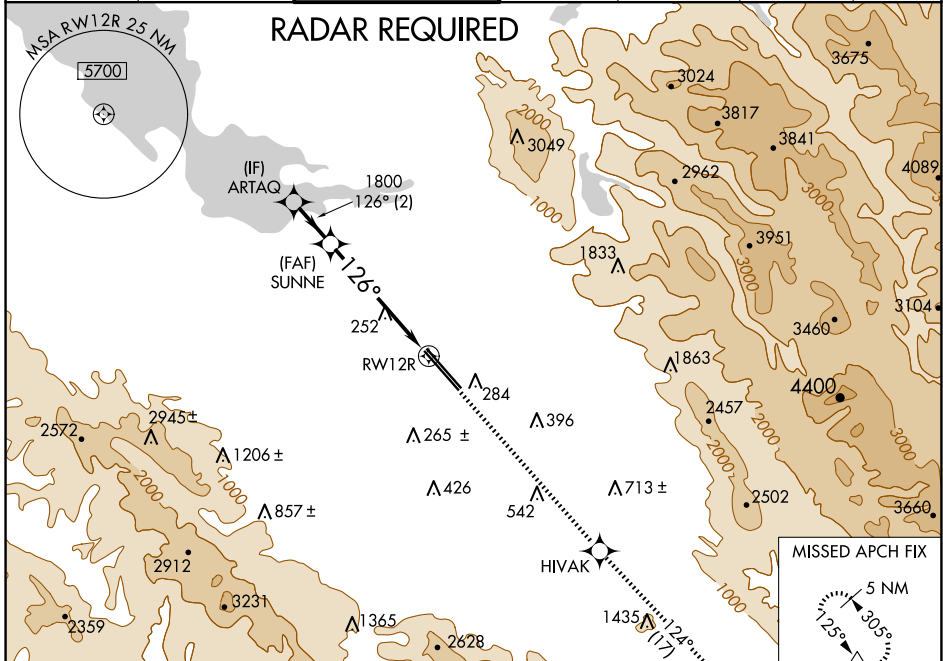
# RNAV (GPS) Y RWY 12R

NORMAN Y MINETA SAN JOSE INTL (SJC)

For uncompensated Baro-VNAV systems, LNAV/VNAV NA below -1°C (31°F) or above 54°C (130°F). DME/DME RNP-0.3 NA. For inoperative MALSR, increase LNAV/VNAV all Cats visibility to 1 mile and LNAV Cats C/D visibility to 1 3/8 mile.

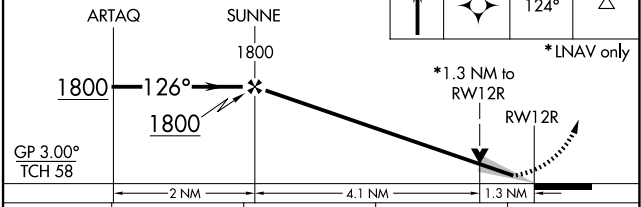
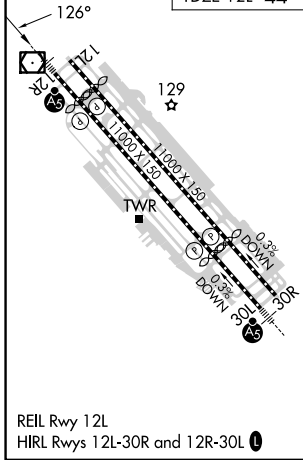
MALSR Rwy 12R  
MISSED APPROACH: Climb to 4600 direct HIVAK and on track 124° to GILRO and hold.

D-ATIS <b>126.95</b>	NORCAL APP CON <b>120.1 290.25</b>	SAN JOSE TOWER * <b>124.0 (CTAF) 0 257.6</b>	GND CON <b>121.7</b>	CLNC DEL <b>118.0</b>	CPDLC	UNICOM <b>122.95</b>
-------------------------	---------------------------------------	---	-------------------------	--------------------------	-------	-------------------------



ELEV 62	TDZE 12R 46	TDZE 12L 44
---------	-------------	-------------

VGSI and RNAV glidepath not coincident (VGSI Angle 3.00/TCH 75).



ARTAQ	SUNNE		
1800	1800		
GP 3.00° TCH 58			
CATEGORY	A	B	C
LPV DA	246-1/2		200 (200-1/2)
LNAV/VNAV DA	371-5/8 325 (400-5/8)		371-1 325 (400-1)
LNAV MDA	520-1/2 474 (500-1/2)		520-1 474 (500-1)
SIDESTEP 12L	520-1 476 (500-1)		520-1/2 476 (500-1/2) 520-2 476 (500-2)

SW-2, 20 MAR 2025 to 17 APR 2025

SW-2, 20 MAR 2025 to 17 APR 2025