

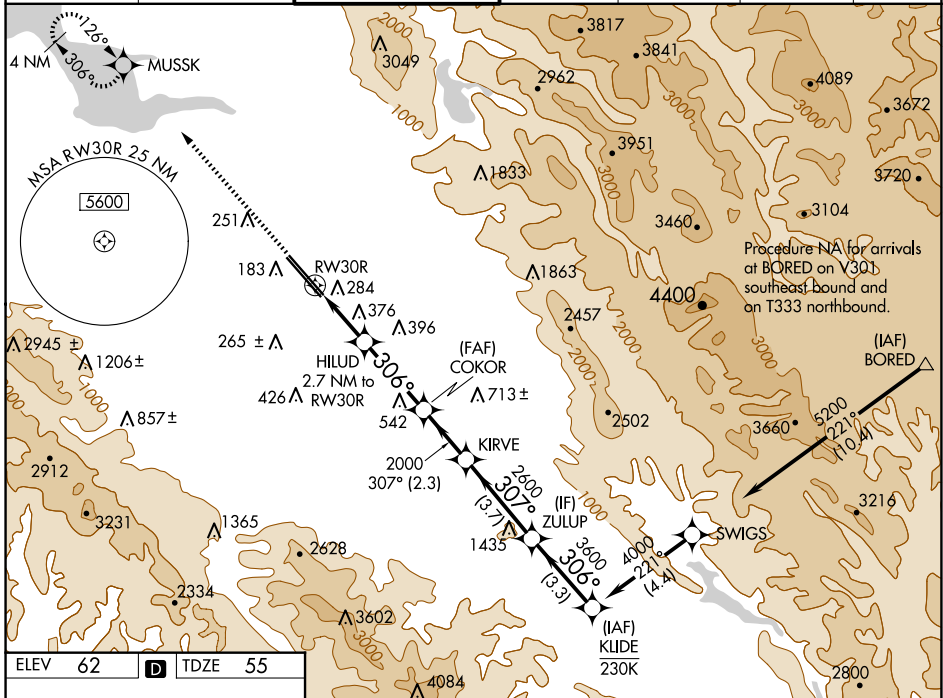
WAAS CH 72901 W30B	APP CRS 306°	Rwy Idg 7597 TDZE 55 Apt Elev 62
--	------------------------	---

RNAV (GPS) Y RWY 30R

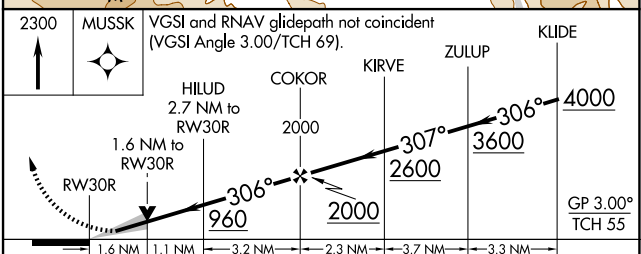
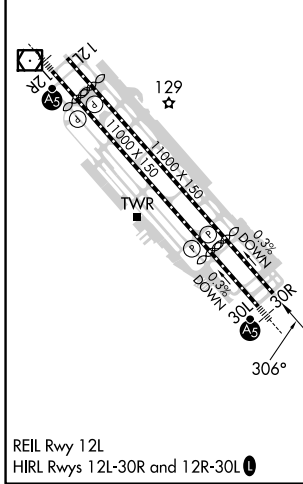
NORMAN Y MINETA SAN JOSE INTL (SJC)

RNP APCH-GPS.		MISSED APPROACH: Climb to 2300 direct MUSSK and hold.			
▼ For uncompensated Baro-VNAV systems, LNAV/VNAV NA below -1°C or above 54°C.					

D-ATIS 126.95	NORCAL APP CON 120.1 290.25	SAN JOSE TOWER ★ 124.0 (CTAF) 257.6	GND CON 121.7	CLNC DEL 118.0	CPDLC	UNICOM 122.95
-------------------------	---------------------------------------	---	-------------------------	--------------------------	-------	-------------------------



ELEV 62	D	TDZE 55
---------	----------	---------



CATEGORY	A	B	C	D
LPV DA		255- ³ / ₄	200 (200- ³ / ₄)	
LNAV/VNAV DA		541-1 ³ / ₈	486 (500-1 ³ / ₈)	
LNAV MDA	640-1	585 (600-1)	640-1 ³ / ₄	585 (600-1 ³ / ₄)
C CIRCLING	640-1 578 (600-1)	700-1 638 (700-1)	700-1 ³ / ₄ 638 (700-1 ³ / ₄)	700-2 638 (700-2)

SW-2, 20 MAR 2025 to 17 APR 2025

SW-2, 20 MAR 2025 to 17 APR 2025