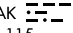


(SJC3.MOONY) 23334

# SAN JOSE THREE DEPARTURE

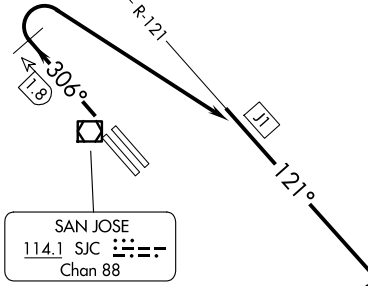
AL-693 (FAA)

NORMAN Y MINETA SAN JOSE INTL (SJC)  
SAN JOSE, CALIFORNIA

OAKLAND  
116.8 OAK   
Chan 115

**TOP ALTITUDE:**  
**5000**

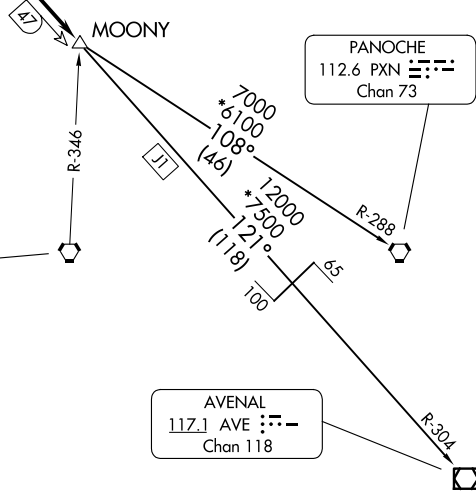
- D-ATIS 126.95
- CLNC DEL 118.0
- CPDLC
- GND CON 121.7
- SAN JOSE TOWER\* 124.0 257.6
- NORCAL DEP CON 121.3 270.35

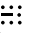


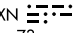
### TAKEOFF MINIMUMS

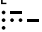
Rwys 12L/R: NA-operational.  
Rwys 30L/R: Standard with a minimum climb of 480' per NM to 4000.

SAN JOSE  
114.1 SJC   
Chan 88



SALINAS  
117.3 SNS   
Chan 120

PANOCHÉ  
112.6 PXN   
Chan 73

AVENAL  
117.1 AVE   
Chan 118

NOTE: DME and RADAR required.

NOTE: Chart not to scale.

### DEPARTURE ROUTE DESCRIPTION

TAKEOFF RUNWAYS 30L/R: Climb heading 306° to SJC 1.8 DME NW of SJC VOR/DME, then turn right to intercept and proceed on OAK R-121 to MOONY INT, thence. . . .  
. . . .on (transition) or (assigned route). Maintain 5000, expect clearance to filed altitude ten minutes after departure.

AVENAL TRANSITION (SJC3.AVE): From over MOONY INT on OAK R-121 and AVE R-304 to AVE VOR/DME.

PANOCHÉ TRANSITION (SJC3.PXN): From over MOONY INT on PXN R-288 to PXN VORTAC.

# SAN JOSE THREE DEPARTURE

(SJC3.MOONY) 15AUG19

SAN JOSE, CALIFORNIA  
NORMAN Y MINETA SAN JOSE INTL (SJC)

SW-2, 20 MAR 2025 to 17 APR 2025

SW-2, 20 MAR 2025 to 17 APR 2025