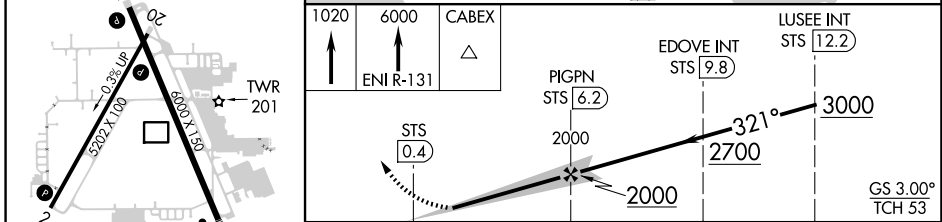
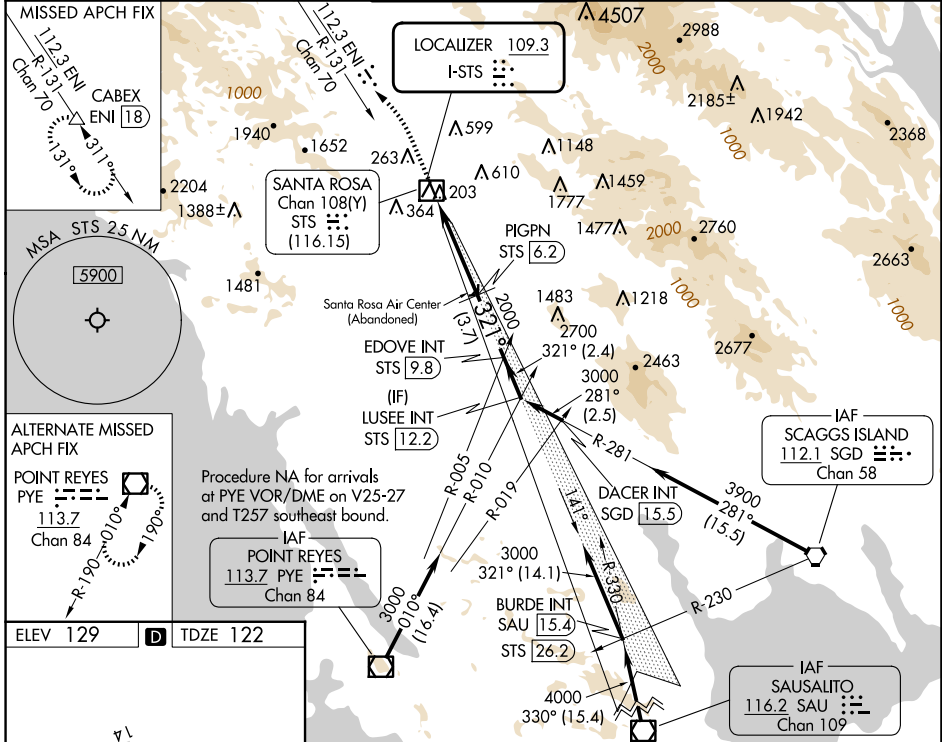


LOC I-STS 109.3	APP CRS 321°	Rwy Idg TDZE Apt Elev	6000 122 129
---------------------------	------------------------	-----------------------------	---

ILS or LOC RWY 32
CHARLES M SCHULZ/SONOMA COUNTY (STS)

DME required.		MALSR	MISSED APPROACH: Climb to 1020 then climb to 6000 on ENI VORTAC R-131 to CABEX/ENI VORTAC 18 DME and hold, continue climb-in-hold to 6000.
Autopilot coupled approach NA below 1286. DME from STS DME. DME use requires simultaneous reception of I-STS and STS DME. For inop ALS increase S-ILS 32 visibility all Cats to RVR 4500, S-LOC 32 Cats A/B to RVR 5500.			

ATIS 120.55	OAKLAND CENTER 127.8 353.5	SANTA ROSA TOWER* 118.5 (CTAF) 363.0	GND CON 121.9	UNICOM 122.95
-----------------------	--------------------------------------	--	-------------------------	-------------------------



ELEV 129	D	TDZE 122		
CATEGORY	A	B	C	D
S-ILS 32	377/24 255 (300-½)			
S-LOC 32	580/24	458 (500-½)	580/45	458 (500-¾)
<input checked="" type="checkbox"/> CIRCLING	600-1 471 (500-1)	680-1 551 (600-1)	1080-3 951 (1000-3)	1420-3 1291 (1300-3)

SW-2, 20 MAR 2025 to 17 APR 2025

SW-2, 20 MAR 2025 to 17 APR 2025