

WAAS CH 81924 W19A	APP CRS 193°	Rwy Idg TDZE Apt Elev	5516 78 80
--	------------------------	-----------------------------	---------------------------------------

RNAV (GPS) RWY 19

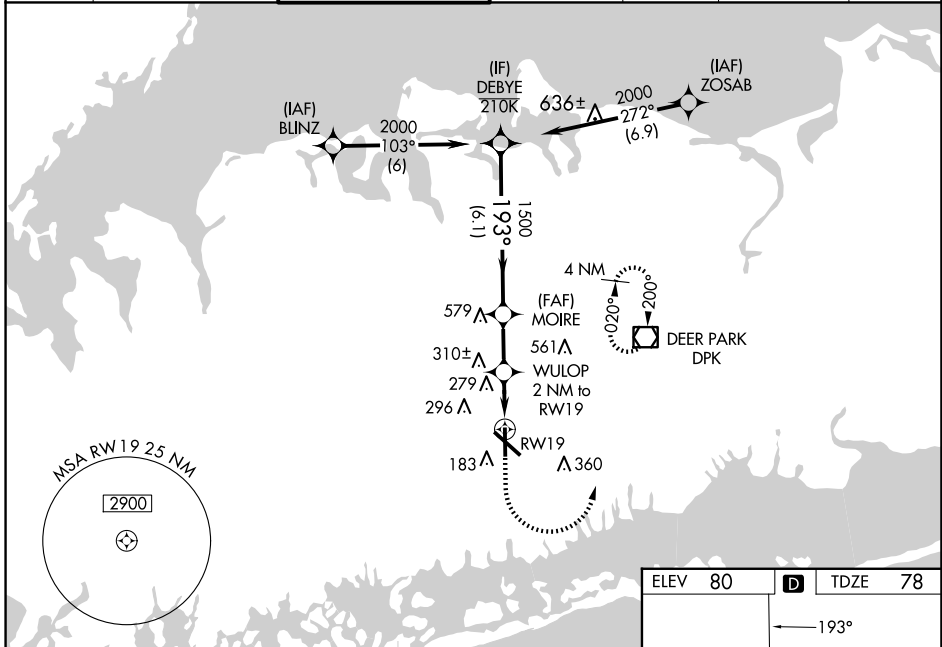
REPUBLIC (F'RG)

RNP APCH - GPS.

⚠ Helicopter visibility reduction below $\frac{3}{4}$ SM NA.
For uncompensated Baro-VNAV systems, LNAV/VNAV NA below -12°C or above 54°C.

MISSED APPROACH:
(Do not exceed 210K until DPK VOR/DME)
Climb to 2000 then climbing left turn to 3000 direct DPK VOR/DME and hold, continue climb-in-hold to 3000.

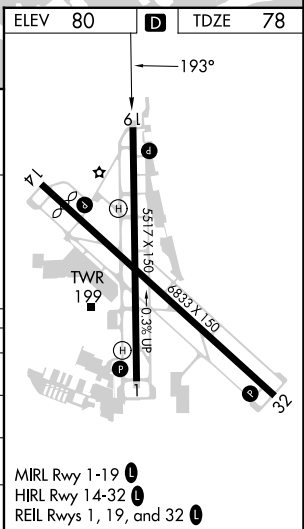
ATIS 126.65	NEW YORK APP CON 128.125 269.0	REPUBLIC TOWER ★ 118.8 (CTAF) 0 279.65	GND CON 121.6 269.6	CLNC DEL 128.25	CLNC DEL 128.25 (When twr closed)	UNICOM 122.95
-----------------------	--	---	-------------------------------	---------------------------	--	-------------------------



NE-2, 20 MAR 2025 to 17 APR 2025

NE-2, 20 MAR 2025 to 17 APR 2025

	DEBYE	MOIRE	WULOP 2 NM to RWY19	DPK
	2000	1500	800	2000 3000
	193°	1500	1.2 NM to RWY19	DPK
	GP 3.20°			
	TCH 41			
	6.1 NM	2.1 NM	0.8 NM	1.2 NM
CATEGORY	A	B	C	D
LPV DA		328- $\frac{3}{4}$	250 (300- $\frac{3}{4}$)	
LNAV/ VNAV DA		504-1 $\frac{1}{4}$	426 (500-1 $\frac{1}{2}$)	
LNAV MDA	520-1	442 (500-1)	520-1 $\frac{3}{8}$	442 (500-1 $\frac{3}{8}$)
CIRCLING	640-1 560 (600-1)	720-1 640 (700-1)	860-2 $\frac{1}{4}$ 780 (800-2 $\frac{1}{4}$)	1000-3 920 (1000-3)



MIRL Rwy 1-19 **Ⓛ**
HIRL Rwy 14-32 **Ⓛ**
REIL Rwy 1, 19, and 32 **Ⓛ**