

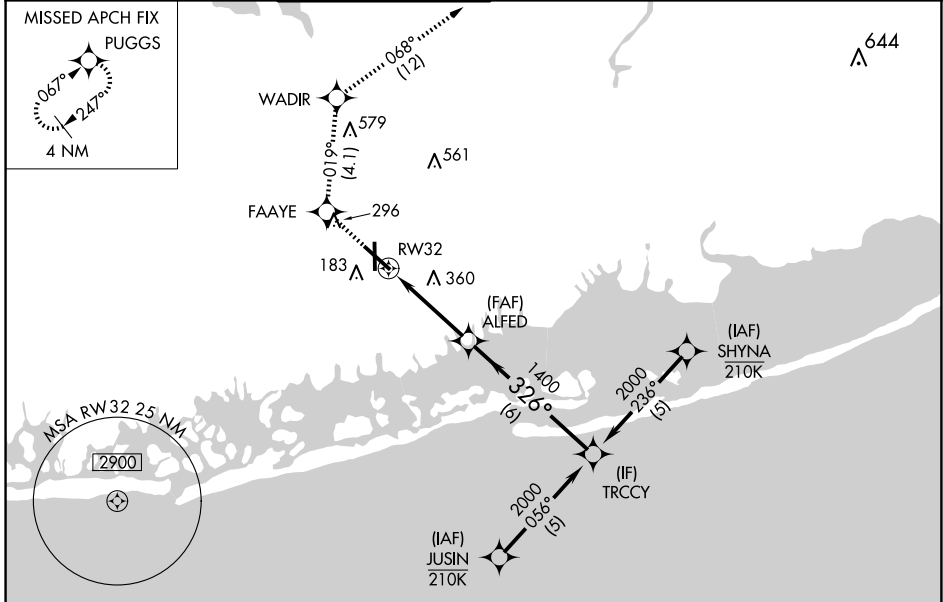
WAAS CH 70715 W32A	APP CRS 326°	Rwy Idg TDZE Apt Elev	6833 68 80
----------------------------------------	------------------------	-----------------------------	---------------------------------------

RNAV (GPS) RWY 32

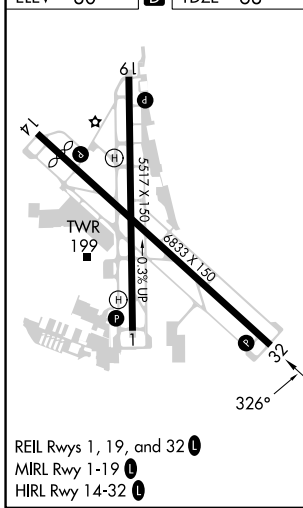
REPUBLIC (F/RG)

RNP APCH - GPS.	MISSED APPROACH: (Do not exceed 190K until WADIR) Climb to 2000 direct FAAYE then on track 019° to WADIR and on track 068° to PUGGS and hold.
<p>▼ For uncompensated Baro-VNAV systems, LNAV/VNAV NA below -12°C or above 54°C. ▲ Rwy 32 helicopter visibility reduction below ¾ SM NA.</p>	

ATIS 126.65	NEW YORK APP CON 128.125 269.0	REPUBLIC TOWER ★ 118.8 (CTAF) 0 279.65	GND CON 121.6 269.6	CLNC DEL 128.25	CLNC DEL 128.25 (When twr closed)	UNICOM 122.95
-----------------------	------------------------------------------	--------------------------------------------------	-------------------------------	---------------------------	------------------------------------------------	-------------------------



ELEV 80	D	TDZE 68
---------	----------	---------



2000	FAAYE	tr 019°	WADIR	tr 068°	PUGGS
CATEGORY	A	B	C	D	
LPV DA		328-¾	260 (300-¾)		
LNAV/VNAV DA		355-⅞	287 (300-⅞)		
LNAV MDA	660-1	592 (600-1)	660-1¾	592 (600-1¾)	
C CIRCLING	660-1 580 (600-1)	720-1 640 (700-1)	860-2¼ 780 (800-2¼)	1000-3 920 (1000-3)	

NE-2, 20 MAR 2025 to 17 APR 2025

NE-2, 20 MAR 2025 to 17 APR 2025