

APP CRS	Rwy Idg	<b>6157</b>
<b>146°</b>	TDZE	<b>77</b>
	Apt Elev	<b>81</b>

# RNAV (RNP) Z RWY 14

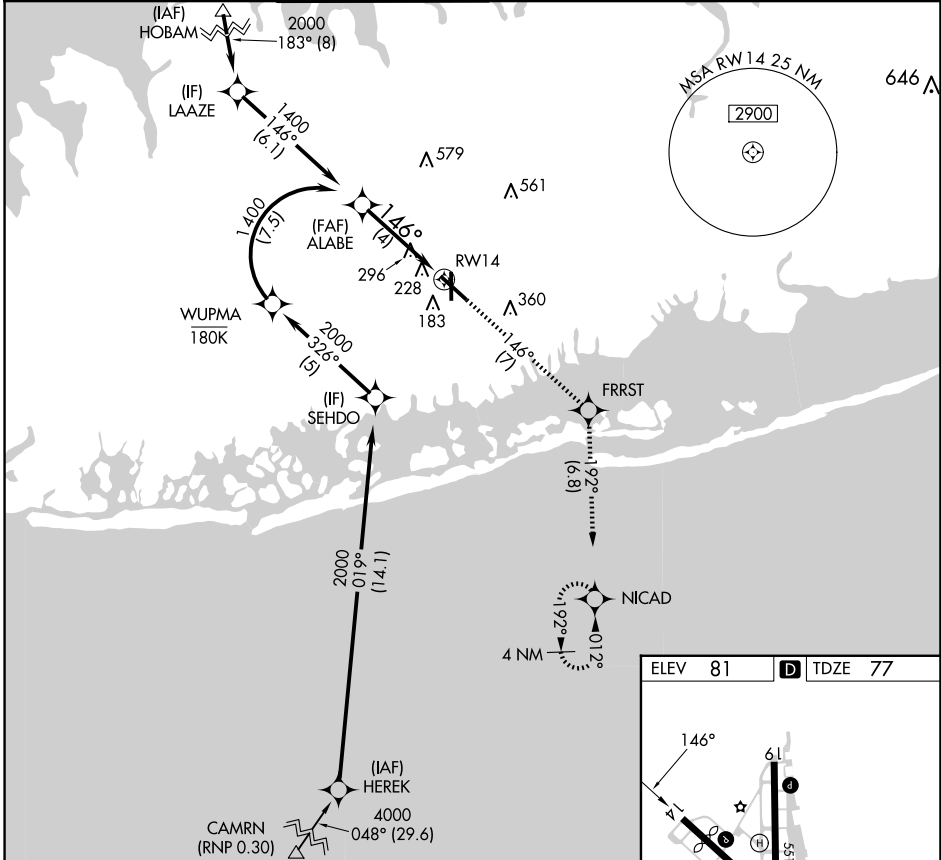
REPUBLIC (F'RG)

RNP AR APCH. RF required from HEREK.

▼ For uncompensated Baro-VNAV systems, procedure NA below -12°C or above 48°C.

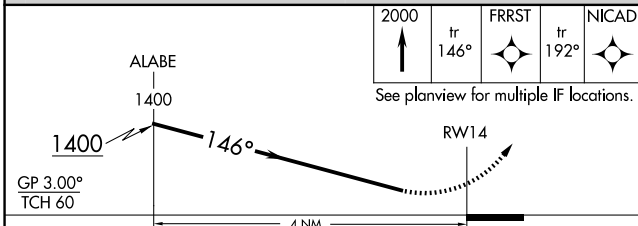
MISSED APPROACH: Climb to 2000 on track 146° to FRRST and on track 192° to NICAD and hold.

ATIS	NEW YORK APP CON	REPUBLIC TOWER ★	GND CON	CLNC DEL	CLNC DEL	UNICOM
<b>126.65</b>	<b>128.125 269.0</b>	<b>118.8 (CTAF) 0 279.65</b>	<b>121.6 269.6</b>	<b>128.25</b>	<b>128.25</b> (When twr closed)	<b>122.95</b>



NE-2, 20 MAR 2025 to 17 APR 2025

NE-2, 20 MAR 2025 to 17 APR 2025



ELEV 81	TDZE 77
---------	---------

Detailed RWY 14 diagram showing runway dimensions: 5517 x 150 and 5853 x 150. Taxiway width is 0.38 UP. Runway numbers 14, 32, and 6L are shown. A note says "MIRL Rwy 1-19", "HIRL Rwy 14-32", and "REIL Rwy 1, 19, and 32".

GP 3.00°	TCH 60			
CATEGORY	A	B	C	D
RNP 0.30 DA		525-1 <sup>3</sup> / <sub>8</sub>	447 (500-1 <sup>3</sup> / <sub>8</sub> )	

**AUTHORIZATION REQUIRED**