

WAAS CH <b>69612</b> <b>W14A</b>	APP CRS <b>146°</b>	Rwy Idg TDZE Apt Elev	<b>6157</b> <b>77</b> <b>80</b>
--	------------------------	-----------------------------	---------------------------------------

# RNAV (GPS) Y RWY 14

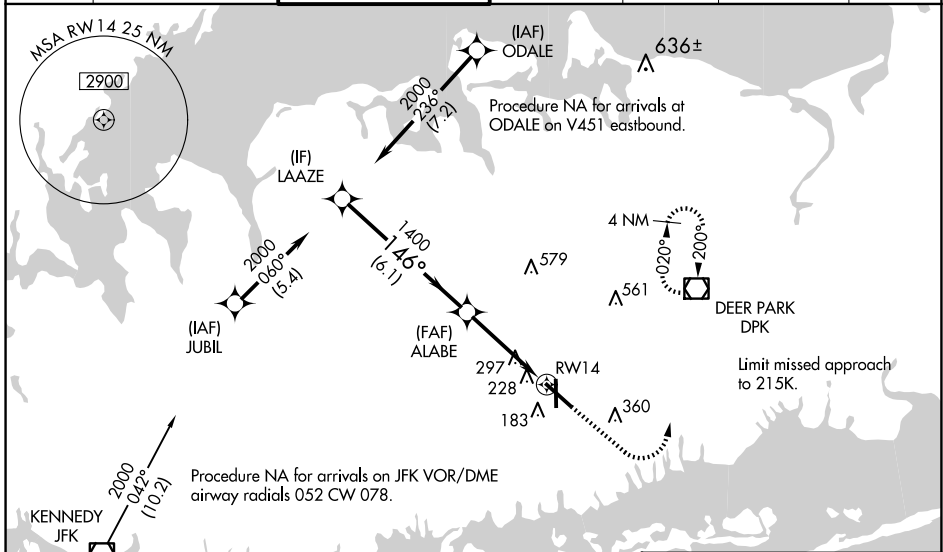
REPUBLIC (F/RG)

RNP APCH - GPS.

**⚠** For uncompensated Baro-VNAV systems, LNAV/VNAV NA below -15°C or above 54°C.  
**⚠** Baro-VNAV and VDP NA when using ISP altimeter setting. When local altimeter setting not received, use ISP altimeter setting and increase LPV DA to 374 feet and all visibilities ½ SM. Increase LNAV/VNAV DA to 442 feet; increase all MDAs 40 feet and LNAV visibility Cat C/D ½ SM, and Circling visibility Cat C ¼ SM.

**MISSED APPROACH:** Climb to 1800 then climbing left turn to 3000 direct DPK VOR/DME and hold, continue climb-in-hold to 3000.

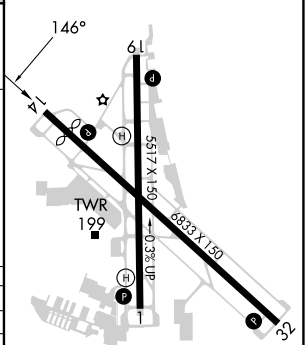
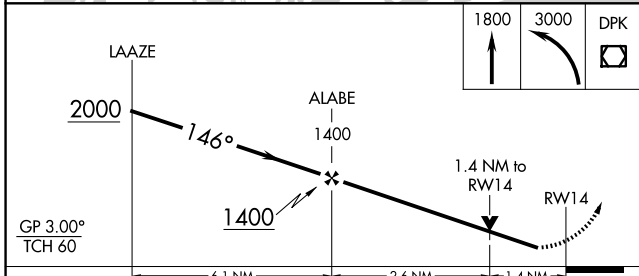
ATIS <b>126.65</b>	NEW YORK APP CON <b>128.125 269.0</b>	REPUBLIC TOWER ★ <b>118.8</b> (CTAF) <b>0 279.65</b>	GND CON <b>121.6 269.6</b>	CLNC DEL <b>128.25</b>	CLNC DEL <b>128.25</b> (When twr closed)	UNICOM <b>122.95</b>
-----------------------	--	---	-------------------------------	---------------------------	--	-------------------------



NE-2, 20 MAR 2025 to 17 APR 2025

NE-2, 20 MAR 2025 to 17 APR 2025

ELEV 80	<b>D</b> TDZE 77
---------	------------------



CATEGORY	A	B	C	D
LPV DA		337-3/4	260 (300-3/4)	
LNAV/VNAV DA		405-1	328 (400-1)	
LNAV MDA	560-3/4	483 (500-3/4)	560-1	483 (500-1)
CIRCLING	640-1 560 (600-1)	720-1 640 (700-1)	860-2 1/4 780 (800-2 1/4)	1000-3 920 (1000-3)

REIL Rwy 1, 19, and 32 **Ⓛ**  
 MIRL Rwy 1-19 **Ⓛ**  
 HIRL Rwy 14-32 **Ⓛ**