

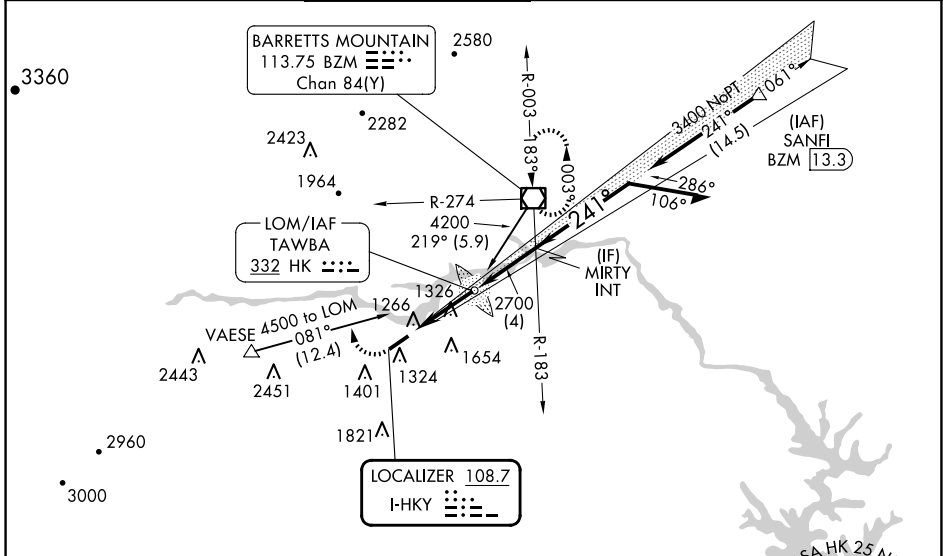
LOC I-HKY 108.7	APP CRS 241°	Rwy Idg TDZE Apt Elev	6401 1190 1190
---------------------------	------------------------	-----------------------------	---

ILS or LOC RWY 24

HICKORY RGNL (HKY)

	For inop ALS, increase S-LOC 24 Cat C and D visibility 1/8 SM.	MALS R 	MISSED APPROACH: Climb to 1700 then climbing right turn to 4000 on heading 340° and on BZM VOR/DME R-274 to BZM VOR/DME and hold.
--	--	------------	---

ASOS 118.325	ATLANTA CENTER 125.15 263.0	HICKORY TOWER ★ 128.15 (CTAF) 0	GND CON 121.7	CLNC DEL 121.7	CLNC DEL 124.25 (When twr closed)
------------------------	---------------------------------------	---	-------------------------	--------------------------	--



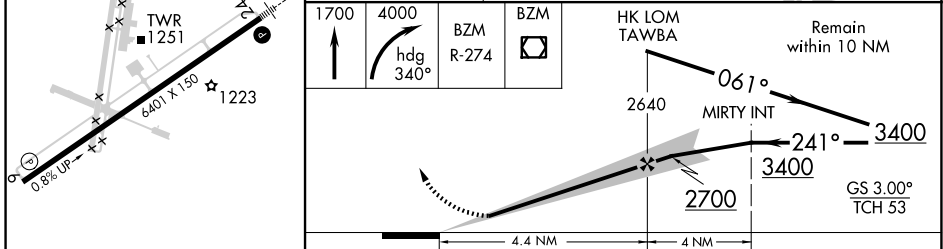
SE-2, 20 MAR 2025 to 17 APR 2025

SE-2, 20 MAR 2025 to 17 APR 2025

ELEV 1190	D	TDZE 1190
-----------	----------	-----------

ALTERNATE MISSED APCH FIX

TAWBA HK 332



CATEGORY	A	B	C	D
S-ILS 24	1390-1/2		200 (200-1/2)	
S-LOC 24	1580-1/2 390 (400-1/2)		1580-5/8 390 (400-5/8)	
C CIRCLING	1640-1 450 (500-1)	1660-1 470 (500-1)	2020-2 1/2 830 (900-2 1/2)	2040-2 3/4 850 (900-2 3/4)

HICKORY, NORTH CAROLINA
Amdt 9 25JAN24

35°44'N-81°23'W

HICKORY RGNL (HKY)

ILS or LOC RWY 24