

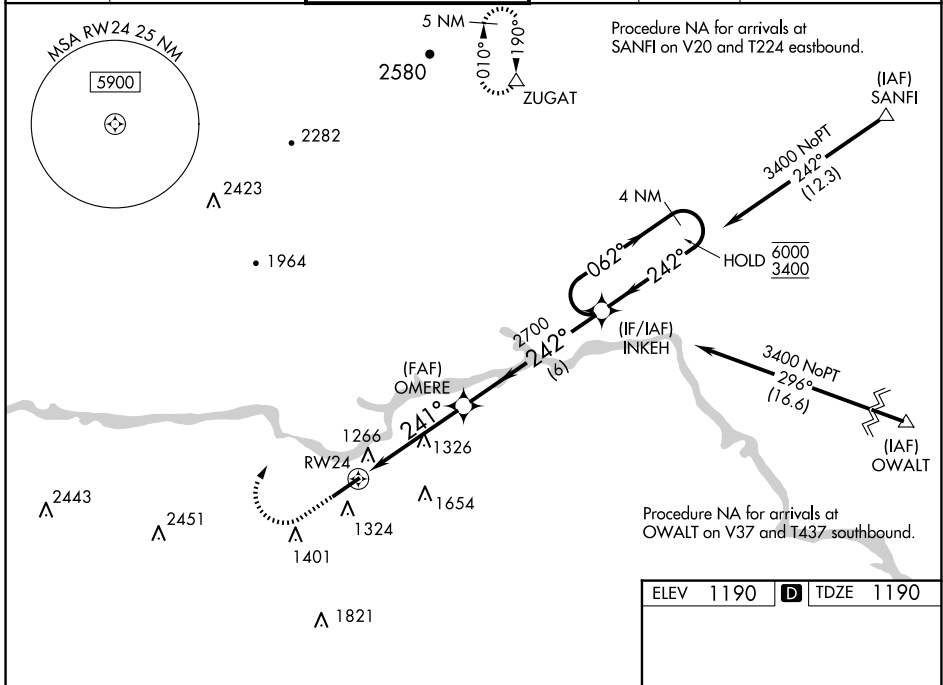
WAAS CH <b>42921</b> <b>W24A</b>	APP CRS <b>241°</b>	Rwy Idg TDZE Apt Elev	<b>6401</b> <b>1190</b> <b>1190</b>
--	------------------------	-----------------------------	---

# RNAV (GPS) RWY 24

HICKORY RGNL (HKY)

RNP APCH-GPS.		MALSR 	MISSED APPROACH: Climb to 2000 then climbing right turn to 5400 direct ZUGAT and hold, continue climb-in-hold to 5400.
For uncompensated Baro-VNAV systems, LNAV/VNAV NA below -8°C or above 54°C. For inop ALS, increase LNAV/VNAV all Cats visibility to 7/8 SM.			

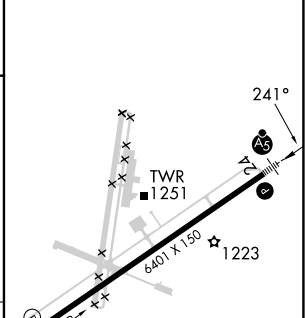
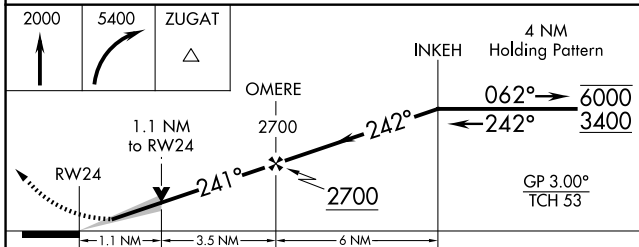
ASOS <b>118.325</b>	ATLANTA CENTER <b>125.15 263.0</b>	HICKORY TOWER ★ <b>128.15 (CTAF) 0</b>	GND CON <b>121.7</b>	CLNC DEL <b>121.7</b>	CLNC DEL <b>124.25</b> (When twr closed)
------------------------	---------------------------------------	---	-------------------------	--------------------------	--



SE-2, 20 MAR 2025 to 17 APR 2025

SE-2, 20 MAR 2025 to 17 APR 2025

ELEV 1190	<b>D</b> TDZE 1190
-----------	--------------------



CATEGORY	A	B	C	D
LPV DA		1390-1/2	200 (200-1/2)	
LNAV/VNAV DA		1467-1/2	277 (300-1/2)	
LNAV MDA	1580-1/2	390 (400-1/2)	1580-5/8	390 (400-5/8)
<b>C</b> CIRCLING	1640-1 450 (500-1)	1660-1 470 (500-1)	2020-2 1/2 830 (900-2 1/2)	2040-2 3/4 850 (900-2 3/4)

HIRL Rwy 6-24 <b>0</b>	REIL Rwy 6
------------------------	------------