
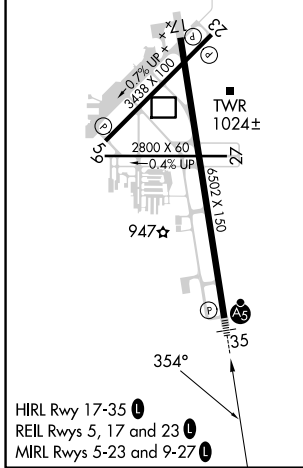
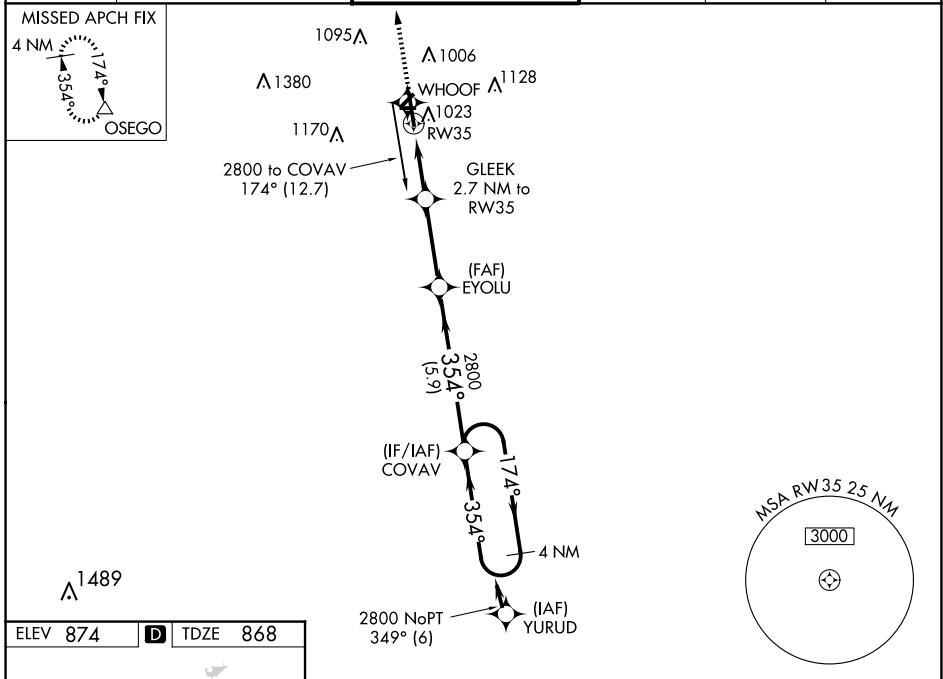


WAAS CH 61102 W35A	APP CRS 354°	Rwy Idg 6502 TDZE 868 Apt Elev 874
--	------------------------	---

RNAV (GPS) RWY 35

KALAMAZOO/BATTLE CREEK INTL (AZO)

RNP APCH.		KALAMAZOO TOWER ★ 118.3 (CTAF) 0 257.875		GND CON 121.9	CLNC DEL 121.75	UNICOM 122.95
<p>▼ For uncompensated Baro-VNAV systems, LNAV/VNAV NA below -19°C or above 54°C. Circling Rwy 5, 9, 17, 23, 27 NA at night. **RVR 1800 authorized with use of FD or AP or HUD to DA.</p>		<p>MALS R</p> 		<p>MISSED APPROACH: Climb to 3000 direct OSEGO and hold.</p>		
ATIS 127.25	GREAT LAKES APP CON ★ 121.2 239.25					



3000	OSEGO	4 NM	4 NM	4 NM	4 NM
↑	△				
* LNAV only.		GLEEK 2.7 NM to RW35	EYOLU	COVAV	2800
	*1.1 NM to RW35	*1780	354°	174°	354°
	1.1	1.6 NM	3.2 NM	5.9 NM	
GP 3.00° TCH 53					
CATEGORY	A	B	C	D	
LPV DA **		1068/24	200 (200-½)		
LNAV/VNAV DA		1264/35	396 (400-¾)		
LNAV MDA	1280/24	412 (500-½)	1280/40	412 (500-¾)	
CIRCLING	1380-1	506 (600-1)	1480-1¾ 606 (700-1¾)	1480-2 606 (700-2)	

EC-1, 20 MAR 2025 to 17 APR 2025

EC-1, 20 MAR 2025 to 17 APR 2025