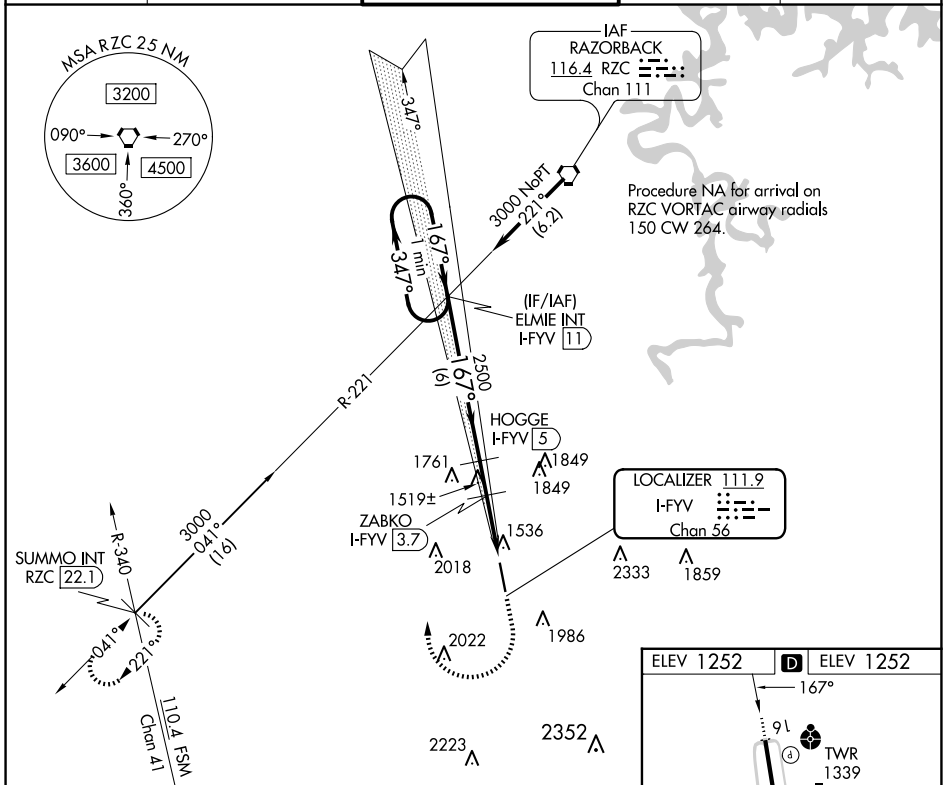


LOC/DME I-FYV 111.9 Chan 56	APP CRS 167°	Rwy Idg TDZE 1252 Apt Elev 1252
---	------------------------	---

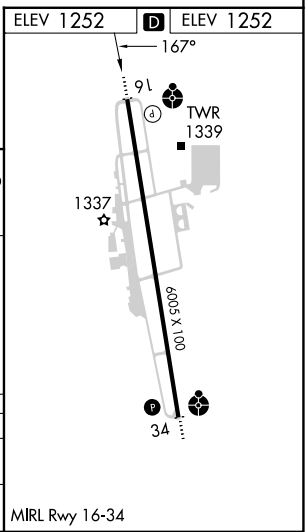
LOC RWY 16

DRAKE FLD (FYV)

<p>⚠ Circling NA east of Rwy 16-34. Rwy 16 helicopter visibility reduction below 3/4 SM NA. DME required.</p>	<p>ODALS</p>	<p>MISSED APPROACH: Climb to 2100 then climbing right turn to 4000 on heading 295° and RZC VORTAC R-221 to SUMMO INT/RZC 22.1 DME and hold.</p>		
		<p>ATIS 119.575</p>	<p>RAZORBACK APP CON★ 121.0 244.575</p>	<p>DRAKE TOWER★ 128.0 (CTAF) 371.9</p>



One Minute Holding Pattern	ELMIE INT I-FYV 11		2100	4000	RZC R-221	SUMMO INT
	3000 ← 347° → 167° →		↑ hdg 295°			
	2500		3.00° TCH 50			
	2080		I-FYV 2.7		I-FYV 1.2	
	6 NM		1.3 NM		1 - 1.5	
CATEGORY	A	B	C	D		
S-LOC 16	1780-3/4	528 (600-3/4)	1780-13/8	528 (600-13/8)		
CIRCLING	2000-1	748 (800-1)	2320-3 1068 (1100-3)	2340-3 1088 (1100-3)		



SC-1, 20 MAR 2025 to 17 APR 2025

SC-1, 20 MAR 2025 to 17 APR 2025