

VORTAC OSH 116.75 Chan 114 (Y)	APP CRS 186°	Rwy Idg TDZE Apt Elev	8002 794 808
----------------------------------------------------	------------------------	-----------------------------	-----------------------------------------

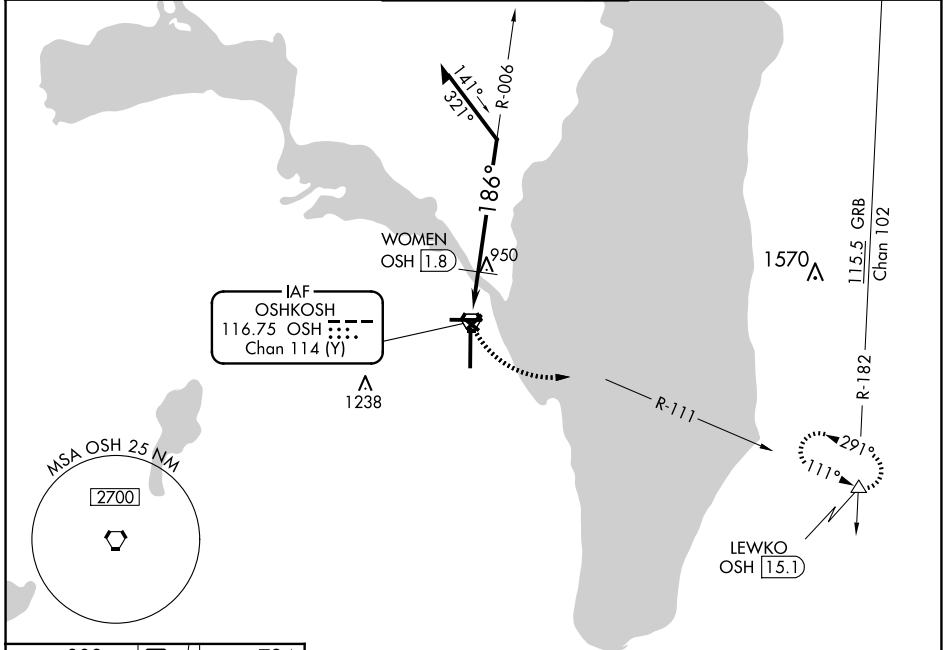
VOR RWY 18

WITTMAN RGNL (OSH)

⚠ Circling to Rwy 5, 23, and 31 NA at night. VDP NA with Fond Du Lac County altimeter setting. When local altimeter setting not received, use Fond Du Lac altimeter setting and increase all MDA 40 feet; increase WOMEN fix minimums Circling Cat D visibility ¼ mile. Helicopter visibility reduction below ¾ SM NA.

MISSED APPROACH: Climbing left turn to 3000 on OSH VORTAC R-111 to LEWKO INT/OSH 15.1 DME and hold.

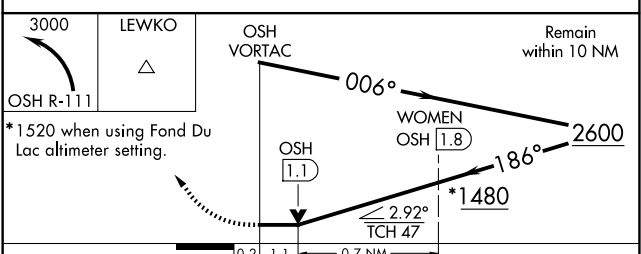
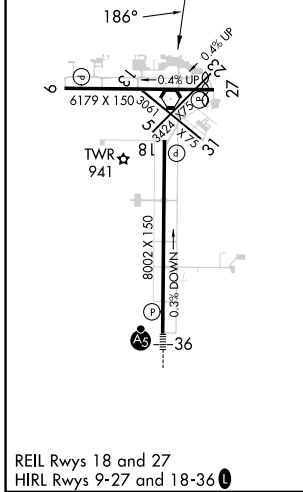
ATIS 125.9	MILWAUKEE APP CON 127.0 263.075	OSHKOSH TOWER ★ 118.5 (CTAF) 290.9	GND CON 132.3	UNICOM 122.95
----------------------	-------------------------------------------	----------------------------------------------	-------------------------	-------------------------



EC-3, 20 MAR 2025 to 17 APR 2025

EC-3, 20 MAR 2025 to 17 APR 2025

ELEV 808	D	TDZE 794
----------	----------	----------



CATEGORY	A	B	C	D
S-18	1480-1	686 (700-1)	1480-2	686 (700-2)
C CIRCLING	1480-1	672 (700-1)	1480-2	1480-2¼ 672 (700-2¼)
WOMEN FIX MINIMUMS				
S-18	1260-1	466 (500-1)	1260-1⅓	466 (500-1⅓)
C CIRCLING	1280-1 472 (500-1)	1300-1 492 (500-1)	1360-1½ 552 (600-1½)	1440-2 632 (700-2)